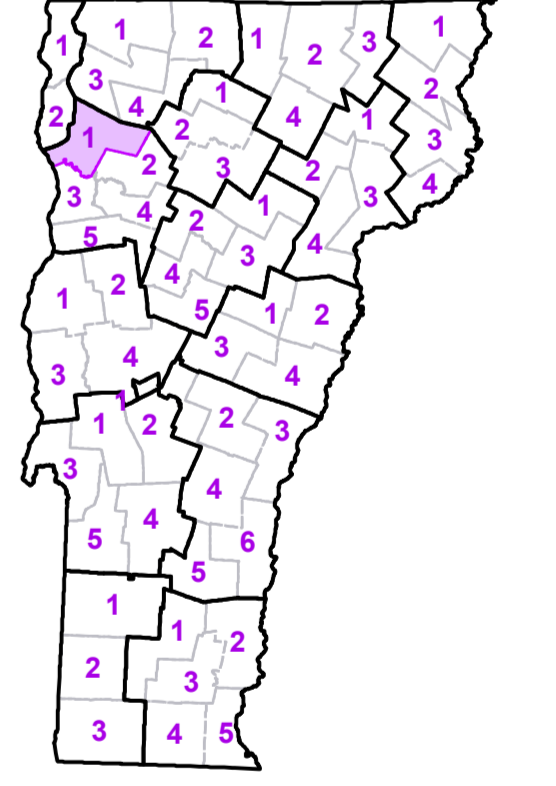


- Interstate
 - U.S. Route
 - Vermont Route
 - Minor Arterial or Collector
 - Interstate
 - US Route Divided
 - US Route
 - State Route Paved
 - State Route Unpaved
 - Town Highway Paved
 - Town Highway Unpaved
 - Unimproved or Impassible
 - Discontinued Highway
 - Town Legal Trail
 - Railroad
- Federal Aid Route**
- Principal Arterial
 - Minor Arterial
 - Major Collector
 - Minor Collector-not Federal Aid eligible
- Emergency Response Site**
- Fire Station
 - Law Enforcement
 - Hospital
 - Building
 - Cemetery
 - Localities
 - State Capital (Montpelier)
 - Bridge or Culvert
 - Water Body
 - Stream or Brook
 - Public Land
 - Public Airport
 - State Boundary
 - County Boundary
 - Town Boundary
 - Village Boundary
 - Urban Compact Boundary
 - County Subtle

TOWN
Bakersfield
Bolton
Burlington City
Cambridge
Cambridge Village
Colchester
Essex
Essex Center U.C.
Fairfax
Fairfield
Fletcher
Georgia
Grand Isle
Grand Isle
Jericho
Jericho Village
Milton
Milton U.C.
North Hero
Shelburne
South Burlington City
South Hero
St. Albans
Underhill
Village of Essex Junction
Westford
Williston
Winooski City

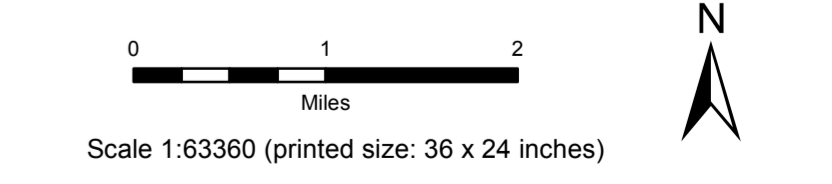
B20 / C20 State Bridge or Culvert Identifier
B20 / C20 Town Bridge or Culvert Identifier

Vermont State Plane Coordinate System
 North American Datum of 1983
 SPCS_Zone_Identifier: 4400
 Geoidic Reference System 80
 5,000-meter grid, Easting - Northing



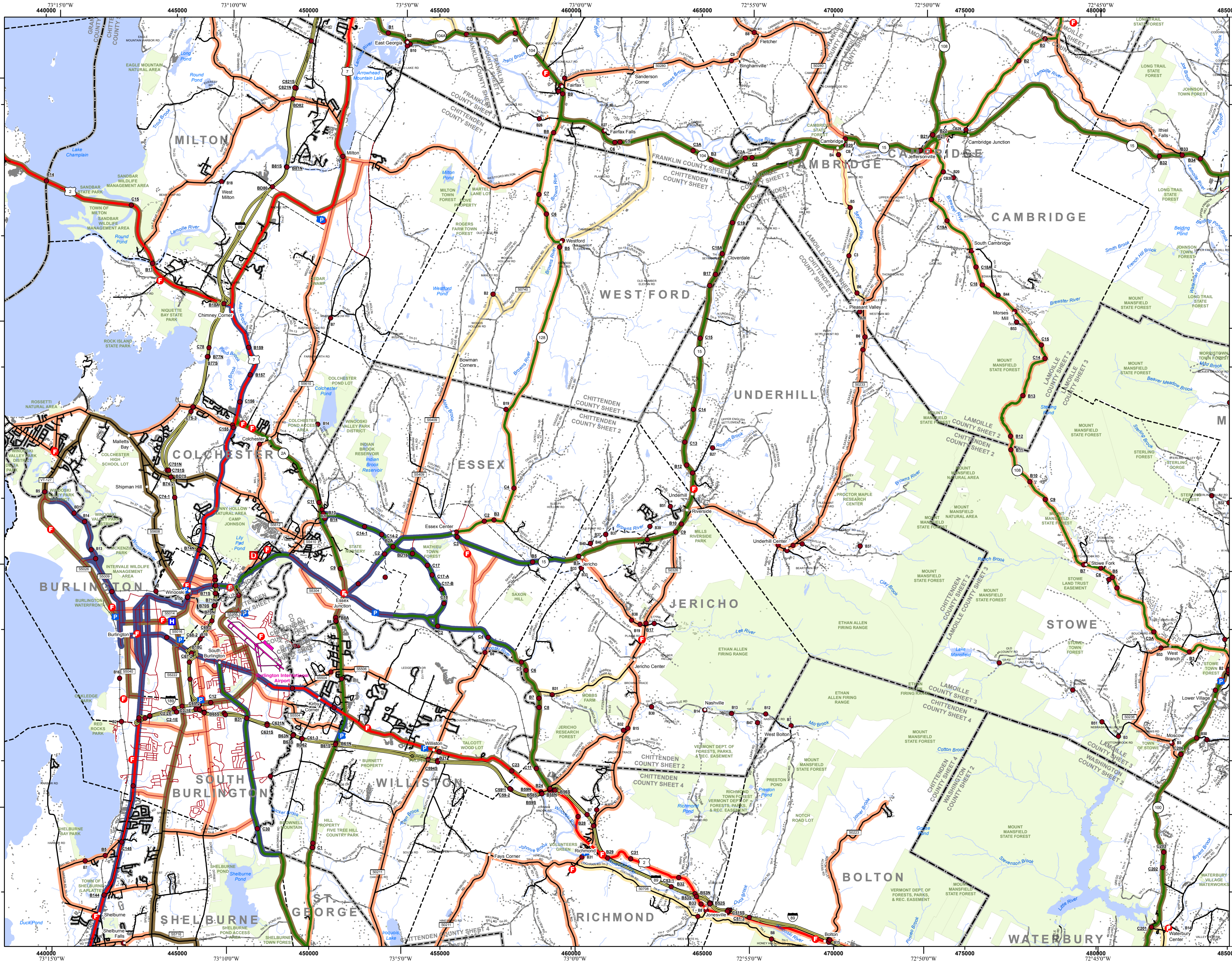
VERMONT COUNTY - TOWN MAP SERIES
CHITTENDEN COUNTY
SHEET 1 OF 5

Prepared by the
Vermont Agency of Transportation
 Mapping Section
 in cooperation with
U.S. Department of Transportation
 Federal Highway Administration
 July 2015



Contact information: Vermont Agency of Transportation
 Division of Policy, Planning and Intermodal Development, Mapping Section
 1 National Life Drive, Montpelier, VT 05633-5001
 Telephone: 802-628-2600

This map was funded in part through grants from the Federal Highway Administration, U.S. Department of Transportation. The representation of the authors expressed herein do not necessarily state or reflect those of the U. S. Department of Transportation.

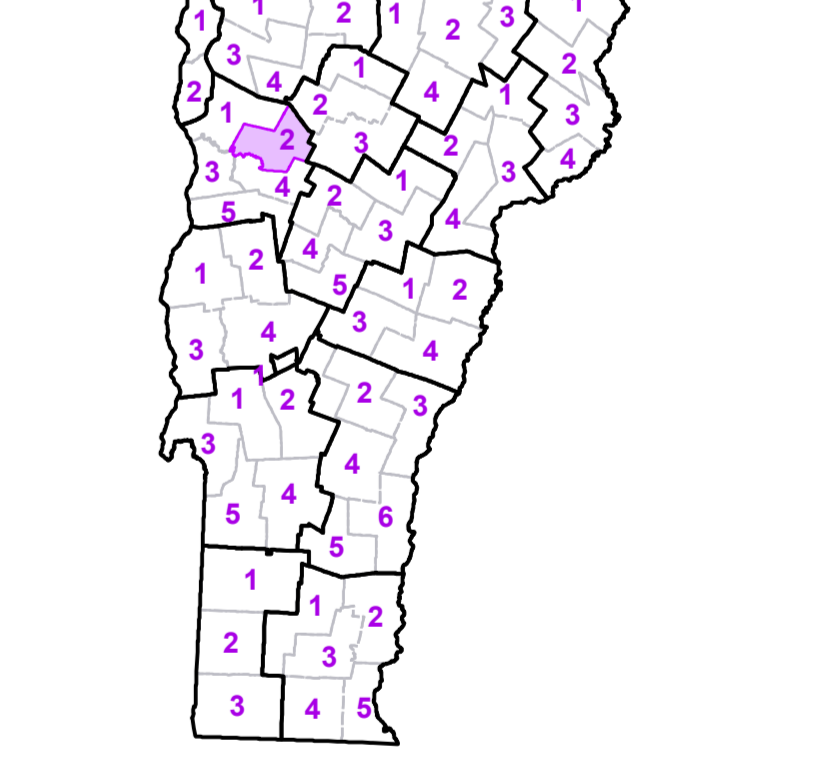


	Interstate
	U.S. Route
	Vermont Route
	Minor Arterial or Collector
	Interstate
	US Route Divided
	US Route
	State Route Paved
	State Route Unpaved
	Town Highway Paved
	Town Highway Unpaved
	Unimproved or Impassible
	Discontinued Highway
	Town Legal Trail
	Railroad
Federal Aid Route	
	Principal Arterial
	Minor Arterial
	Major Collector
	Minor Collector-not Federal Aid eligible
	VTrans District Office
Emergency Response Site	
	Fire Station
	Law Enforcement
	Hospital
	Building
	Cemetery
	Localities
	State Capital (Montpelier)
	Bridge or Culvert
	Water Body
	Stream or Brook
	Public Land
	Public Airport
	State Boundary
	County Boundary
	Town Boundary
	Village Boundary
	Urban Compact Boundary
	County Subtle

TOWN
Bolton
Burlington City
Cambridge
Cambridge Village
Colchester
Essex
Essex Center U.C.
Fairfax
Fletcher
Georgia
Grand Isle
Hinesburg
Jeffersonville Village
Jericho
Jericho Village
Johnson
Johnson Village
Milton
Milton U.C.
Morristown
Richmond
Shelburne
South Burlington City
South Hero
St. George
Stowe
Underhill
Village of Essex Junction
Waterbury
Waterville
Westford
Williston
Winooski City

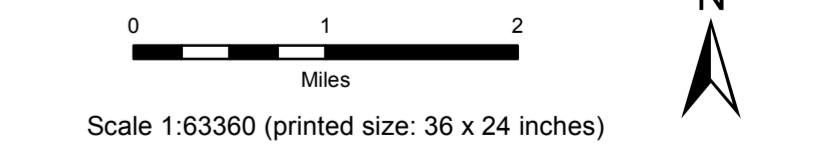
B20 / C20 State Bridge or Culvert Identifier
B20 / C20 Town Bridge or Culvert Identifier

Vermont State Plane Coordinate System
 North American Datum of 1983
 SPCS Zone Identifier 4400
 Geoid Reference System 80
 5,000-meter grid, Easting - Northing



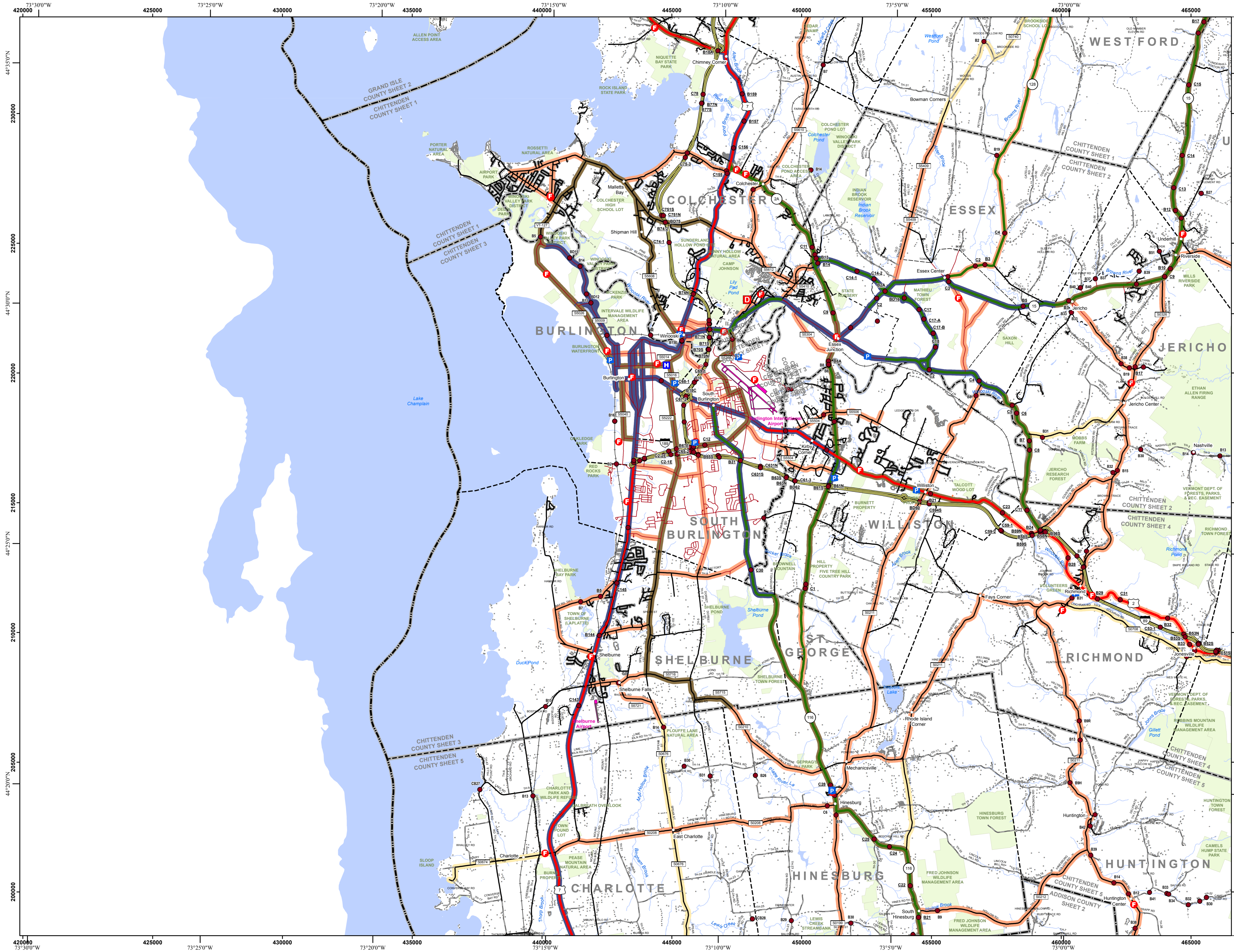
VERMONT COUNTY - TOWN MAP SERIES
CHITTENDEN COUNTY
SHEET 2 OF 5

Prepared by the
Vermont Agency of Transportation
 Mapping Section
 in cooperation with
U.S. Department of Transportation
 Federal Highway Administration
 July 2015



Contact information: Vermont Agency of Transportation
 Division of Policy, Planning and Intermodal Development, Mapping Section
 1 National Life Drive, Montpelier, VT 05633-5001
 Telephone: 802-828-2600

This map was funded in part through grants from the Federal Highway Administration, U.S. Department of Transportation. The representation of the authors expressed herein do not necessarily state or reflect those of the U. S. Department of Transportation.



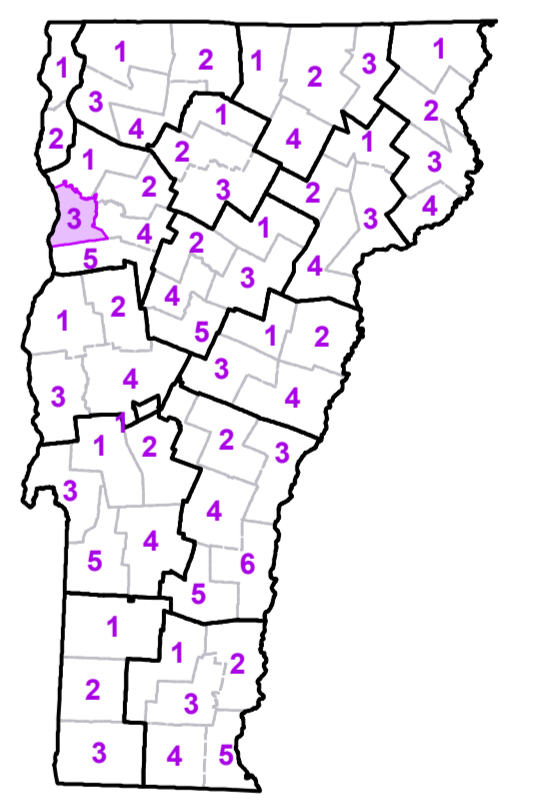
- Interstate
- U.S. Route
- Vermont Route
- Minor Arterial or Collector
- Interstate
- US Route Divided
- US Route
- State Route Paved
- State Route Unpaved
- Town Highway Paved
- Town Highway Unpaved
- Unimproved or Impassible
- Discontinued Highway
- Town Legal Trail
- Railroad

TOWN
Bolton
Burlington City
Charlotte
Colchester
Essex
Essex Center U.C.
Hinesburg
Huntington
Jericho
Jericho Village
Milton
Richmond
Shelburne
South Burlington City
South Hero
St. George
Starksboro
Underhill
Village of Essex Junction
Westford
Williston
Winooski City

- Federal Aid Route**
- Principal Arterial
- Minor Arterial
- Major Collector
- Minor Collector-not Federal Aid eligible
- VTrans District Office
- Emergency Response Site**
- Fire Station
- Law Enforcement
- Hospital
- Building
- Cemetery
- Localities
- State Capital (Montpelier)
- Bridge or Culvert
- Water Body
- Stream or Brook
- Public Land
- Public Airport
- State Boundary
- County Boundary
- Town Boundary
- Village Boundary
- Urban Compact Boundary
- County Subtle

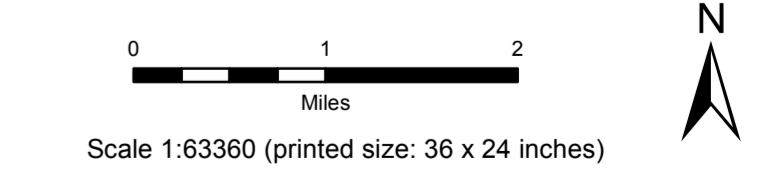
B20 / C20 State Bridge or Culvert Identifier
B20 / C20 Town Bridge or Culvert Identifier

Vermont State Plane Coordinate System
 North American Datum of 1983
 SPCS_Zone_Identifier: 4400
 Geodetic Reference System: 80
 5,000-meter grid, Easting - Northing



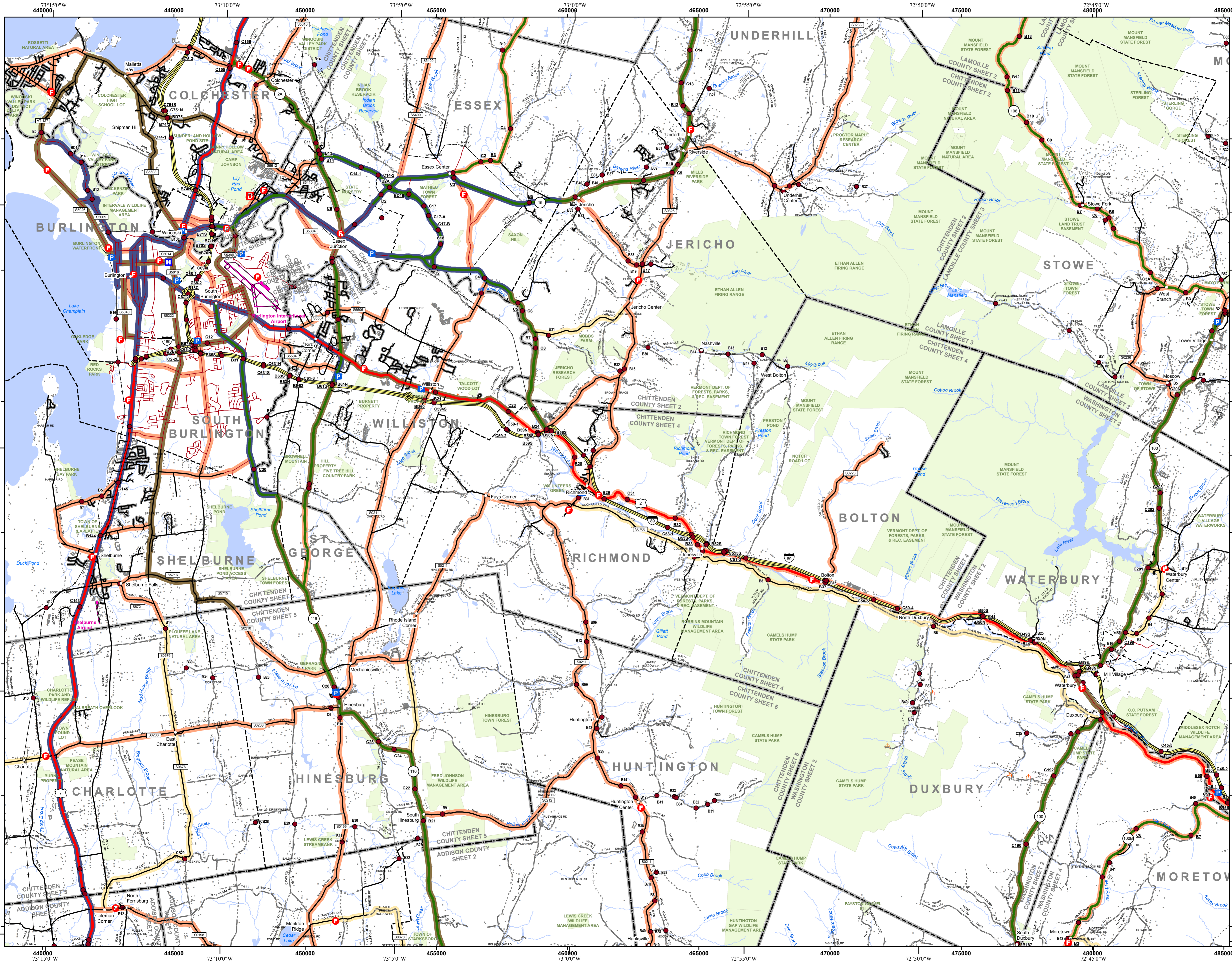
VERMONT COUNTY - TOWN MAP SERIES
CHITTENDEN COUNTY
SHEET 3 OF 5

Prepared by the
Vermont Agency of Transportation
 Mapping Section
 in cooperation with
U.S. Department of Transportation
 Federal Highway Administration
 July 2015



Contact information: Vermont Agency of Transportation
 Division of Policy, Planning and Intermodal Development, Mapping Section
 National Life Drive, Montpelier, VT 05633-5001
 Telephone: 802-628-2600

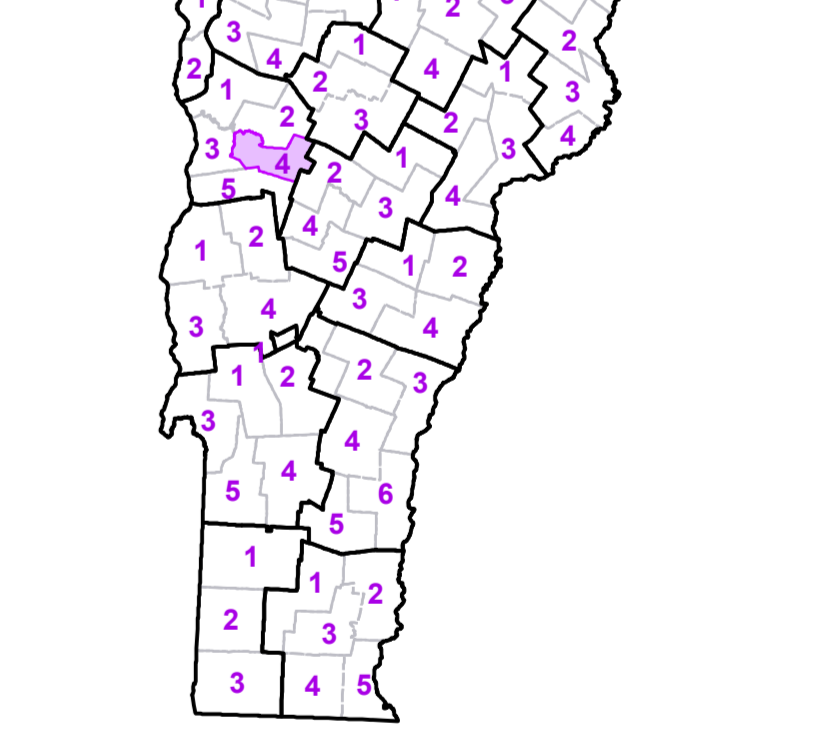
This map was funded in part through grants from the Federal Highway Administration, U.S. Department of Transportation. The representation of the authors expressed herein do not necessarily state or reflect those of the U. S. Department of Transportation.



- Interstate
 - U.S. Route
 - Vermont Route
 - Minor Arterial or Collector
 - Interstate
 - US Route Divided
 - US Route
 - State Route Paved
 - State Route Unpaved
 - Town Highway Paved
 - Town Highway Unpaved
 - Unimproved or Impassible
 - Discontinued Highway
 - Town Legal Trail
 - Railroad
- Federal Aid Route**
- Principal Arterial
 - Minor Arterial
 - Major Collector
 - Minor Collector-not Federal Aid eligible
- Emergency Response Site**
- Fire Station
 - Law Enforcement
 - Hospital
 - Building
 - Cemetery
 - Localities
 - State Capital (Montpelier)
 - Bridge or Culvert
 - Water Body
 - Stream or Brook
 - Public Land
 - Public Airport
- State Boundary
 - County Boundary
 - Town Boundary
 - Village Boundary
 - Urban Compact Boundary
 - County Subtle
- | TOWN |
|---------------------------|
| Bolton |
| Burlington City |
| Cambridge |
| Charlotte |
| Colchester |
| Duxbury |
| Essex |
| Essex Center U.C. |
| Fayston |
| Ferrisburgh |
| Hinesburg |
| Huntington |
| Jericho |
| Jericho Village |
| Middlesex |
| Monkton |
| Moretown |
| Morristown |
| Richmond |
| Shelburne |
| South Burlington City |
| St. George |
| Starksboro |
| Stowe |
| Underhill |
| Village of Essex Junction |
| Waterbury |
| Waterbury |
| Waterbury |
| Waterbury Village |
| Westford |
| Williston |
| Winooski City |

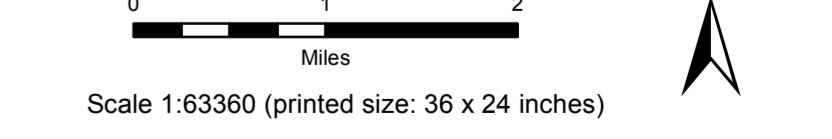
B20 / C20 State Bridge or Culvert Identifier
B20 / C20 Town Bridge or Culvert Identifier

Vermont State Plane Coordinate System
 North American Datum of 1983
 SPCS Zone Identifier 4400
 Geosidic Reference System 80
 5,000-meter grid, Easting - Northing



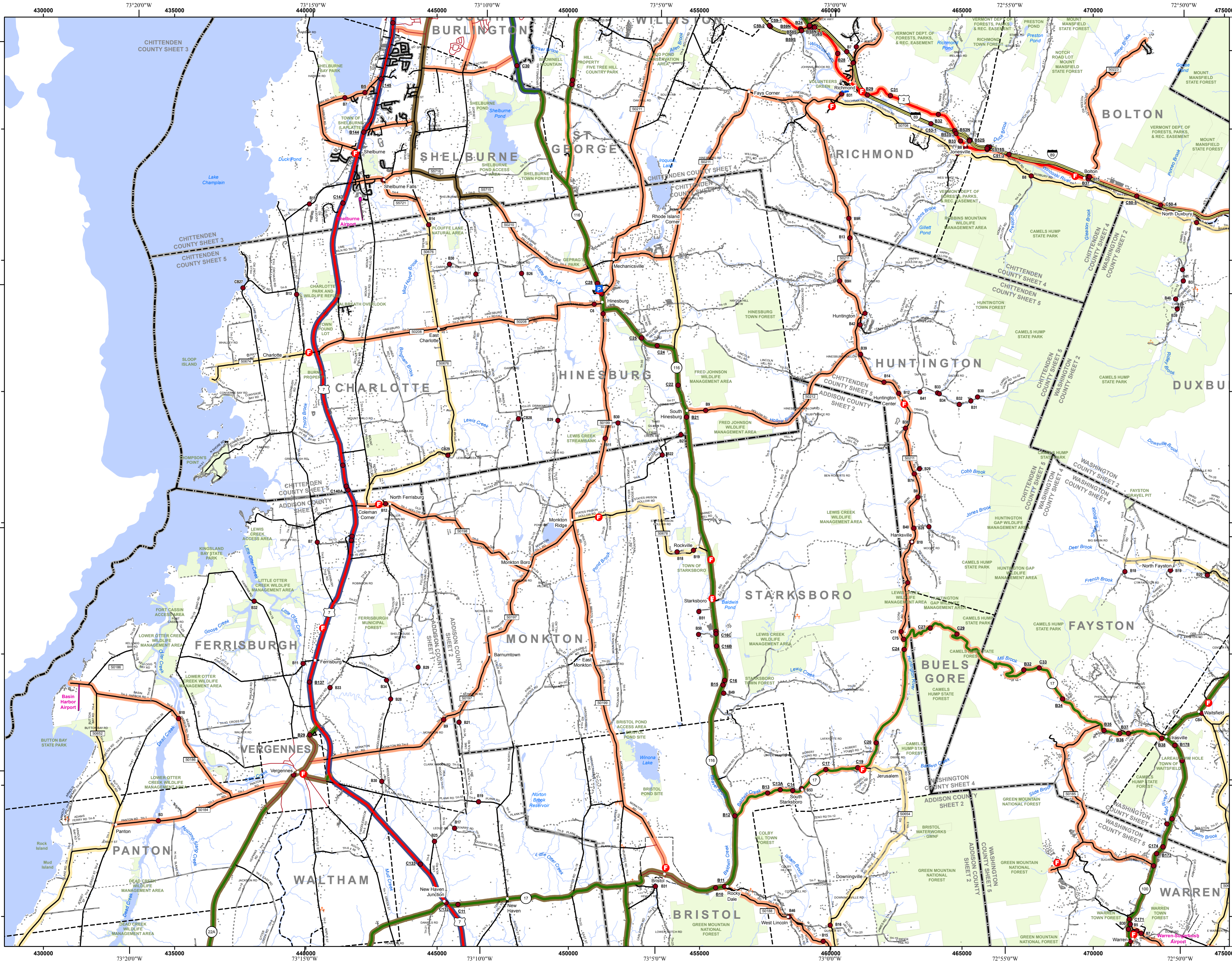
VERMONT COUNTY - TOWN MAP SERIES
CHITTENDEN COUNTY
SHEET 4 OF 5

Prepared by the
Vermont Agency of Transportation
 Mapping Section
 in cooperation with
U.S. Department of Transportation
 Federal Highway Administration
 July 2015



Contact information: Vermont Agency of Transportation
 Division of Policy, Planning and Intermodal Development, Mapping Section
 1 National Life Drive, Montpelier, VT 05633-5001
 Telephone: 802-828-2600

This map was funded in part through grants from the Federal Highway Administration, U.S. Department of Transportation. The representation of the authors expressed herein is not necessarily state or reflect those of the U. S. Department of Transportation.

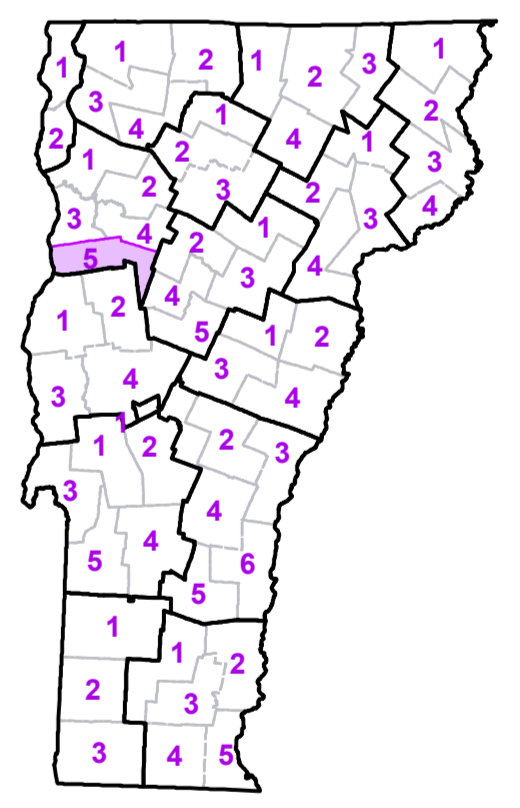


- Interstate
- U.S. Route
- Vermont Route
- Minor Arterial or Collector
- Interstate
- US Route Divided
- US Route
- State Route Paved
- State Route Unpaved
- Town Highway Paved
- Town Highway Unpaved
- Unimproved or Impassible
- Discontinued Highway
- Town Legal Trail
- Railroad
- Federal Aid Route
 - Principal Arterial
 - Minor Arterial
 - Major Collector
 - Minor Collector-not Federal Aid eligible
- VTrans District Office
- Emergency Response Site
 - Fire Station
 - Law Enforcement
 - Hospital
 - Building
 - Cemetery
 - Localities
 - State Capital (Montpelier)
 - Bridge or Culvert
 - Water Body
 - Stream or Brook
 - Public Land
 - Public Airport
- State Boundary
- County Boundary
- Town Boundary
- Village Boundary
- Urban Compact Boundary
- County Subtle

TOWN
Addison
Bolton
Bristol
Bristol U.C.
Buels Gore
Charlotte
Duxbury
Fayston
Ferrisburgh
Hinesburg
Huntington
Lincoln
Monkton
New Haven
Panton
Richmond
Shelburne
South Burlington City
St. George
Starksboro
Vergennes City
Waitsfield
Waltham
Warren
Waterbury
Williston

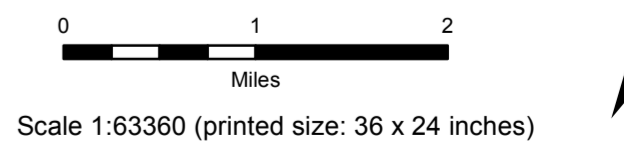
B20 / C20 State Bridge or Culvert Identifier
B20 / C20 Town Bridge or Culvert Identifier

Vermont State Plane Coordinate System
 North American Datum of 1983
 SPCS_Zone_Identifier: 4400
 Geoidic Reference System 80
 5,000-meter grid, Easting - Northing



VERMONT COUNTY - TOWN MAP SERIES
CHITTENDEN COUNTY
SHEET 5 OF 5

Prepared by the
Vermont Agency of Transportation
 Mapping Section
 in cooperation with
U.S. Department of Transportation
 Federal Highway Administration
 July 2015



Contact information: Vermont Agency of Transportation
 Division of Policy, Planning and Intermodal Development, Mapping Section
 National Life Drive, Montpelier, VT 05633-5001
 Telephone: 802-628-2600

This map was funded in part through grants from the Federal Highway Administration, U.S. Department of Transportation. The representation of the authors expressed herein do not necessarily state or reflect those of the U. S. Department of Transportation.