

	Interstate
	U.S. Route
	Vermont Route
	Minor Arterial or Collector
	Interstate
	US Route Divided
	US Route
	State Route Paved
	State Route Unpaved
	Town Highway Paved
	Town Highway Unpaved
	Unimproved or Impassible
	Discontinued Highway
	Town Legal Trail
	Railroad
	Federal Aid Route
	Principal Arterial
	Minor Arterial
	Major Collector
	Minor Collector-not Federal Aid eligible
	VTrans District Office
	Emergency Response Site
	Fire Station
	Law Enforcement
	Hospital
	Building
	Cemetery
	Localities
	State Capital (Montpelier)
	Bridge or Culvert
	Water Body
	Stream or Brook
	Public Land
	Public Airport
	State Boundary
	County Boundary
	Town Boundary
	Village Boundary
	Urban Compact Boundary
	County Subtle

TOWN
Albany
Barton
Barton Village
Bloomfield
Brighton
Brownington
Brunswick
Burke
Charleston
Concord
Craftsbury
Danville
East Haven
Ferdinand
Glover
Granby
Greensboro
Hardwick
Irishburg
Island Pond U.C.
Kirby
Lewis
Lunenburg
Lyndon
Lyndonville Village
Newark
Oriens Village
Sheffield
St. Johnsbury
Stannard
Sutton
Victory
Walden
West Burke Village
Westmore
Wheelock

**B20 / C20** State Bridge or Culvert Identifier  
**B20 / C20** Town Bridge or Culvert Identifier

Vermont State Plane Coordinate System  
 North American Datum of 1983  
 SPCS\_Zone\_Identifier: 4400  
 Geospatial Reference System 80  
 5,000-meter grid, Easting - Northing

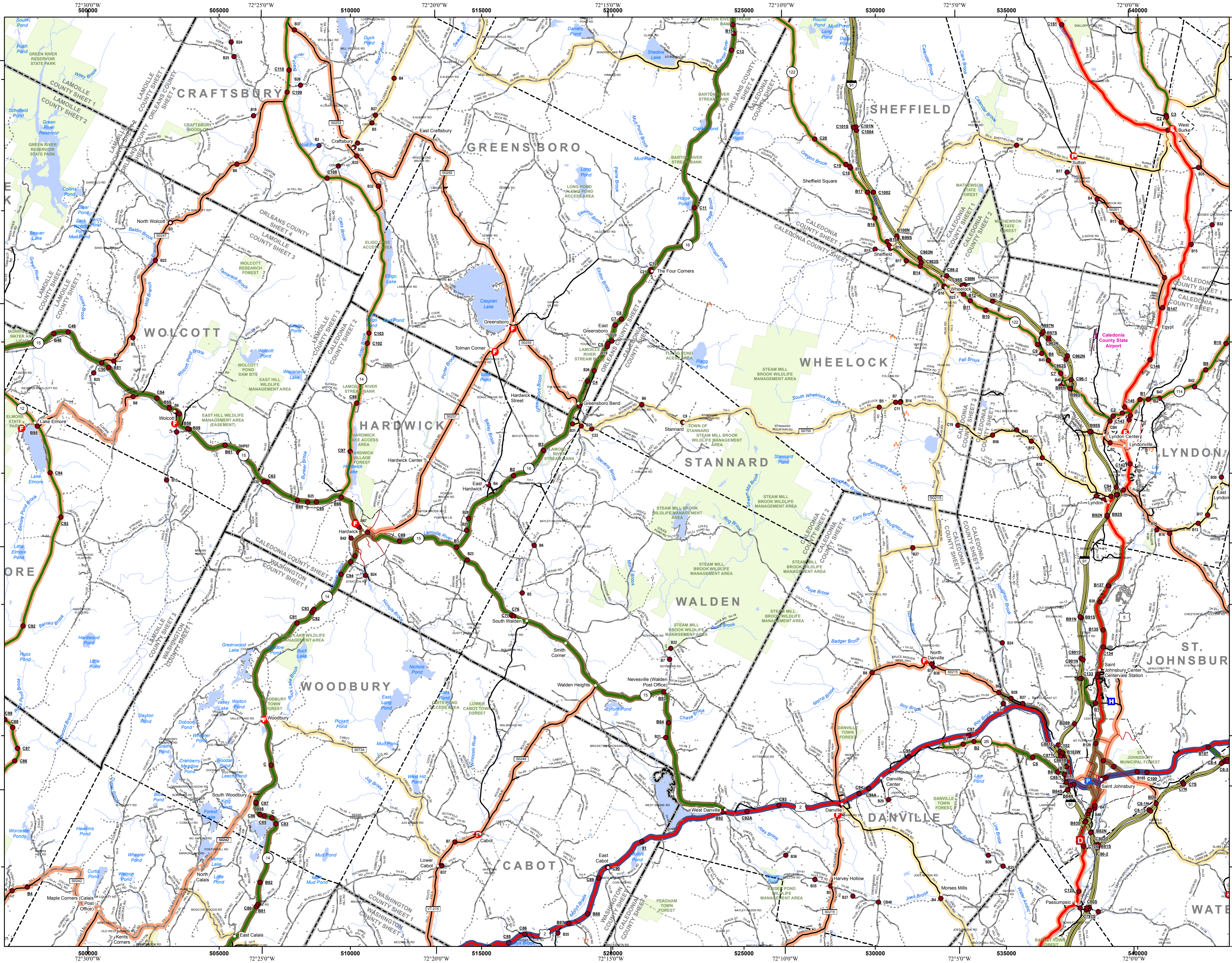
**VERMONT COUNTY - TOWN MAP SERIES**  
**CALEDONIA COUNTY**  
**SHEET 1 OF 4**

Prepared by the  
**Vermont Agency of Transportation**  
 Mapping Section  
 in cooperation with  
**U.S. Department of Transportation**  
 Federal Highway Administration  
 July 2015

Scale 1:63360 (printed size: 36 x 24 inches)

Contact information: Vermont Agency of Transportation  
 Division of Policy, Planning and Intermodal Development, Mapping Section  
 1 National Life Drive, Montpelier, VT 05633-5001  
 Telephone: 802-628-2600

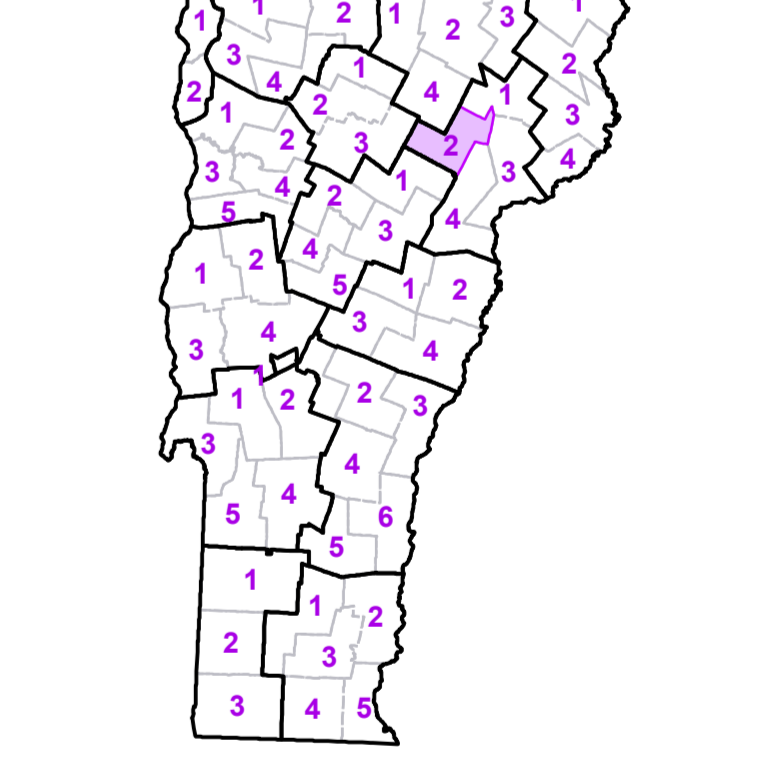
This map was funded in part through grants from the Federal Highway Administration, U.S. Department of Transportation. The representation of the authors expressed herein do not necessarily state or reflect those of the U. S. Department of Transportation.



- Interstate
  - U.S. Route
  - Vermont Route
  - Minor Arterial or Collector
  - Interstate
  - US Route Divided
  - US Route
  - State Route Paved
  - State Route Unpaved
  - Town Highway Paved
  - Town Highway Unpaved
  - Unimproved or Impassible
  - Discontinued Highway
  - Town Legal Trail
  - Railroad
- Federal Aid Route**
- Principal Arterial
  - Minor Arterial
  - Major Collector
  - Minor Collector-not Federal Aid eligible
- VTrans District Office**
- VTrans District Office
- Emergency Response Site**
- Fire Station
  - Law Enforcement
  - Hospital
  - Building
  - Cemetery
  - Localities
  - State Capital (Montpelier)
  - Bridge or Culvert
  - Water Body
  - Stream or Brook
  - Public Land
  - Public Airport
  - State Boundary
  - County Boundary
  - Town Boundary
  - Village Boundary
  - Urban Compact Boundary
  - County Subtle
- | TOWN                |
|---------------------|
| Albany              |
| Barnet              |
| Burke               |
| Cabot               |
| Calais              |
| Craftsbury          |
| Danville            |
| Eden                |
| Elmore              |
| Glover              |
| Greensboro          |
| Hardwick            |
| Hardwick U.C.       |
| Hyde Park           |
| Kirby               |
| Lyndon              |
| Lyndonville Village |
| Marshfield          |
| Morristown          |
| Newark              |
| Peacham             |
| Sheffield           |
| St. Johnsbury       |
| St. Johnsbury U.C.  |
| Stannard            |
| Sutton              |
| Walden              |
| Waterford           |
| West Burke Village  |
| Wheelock            |
| Woodbury            |
| Worcester           |

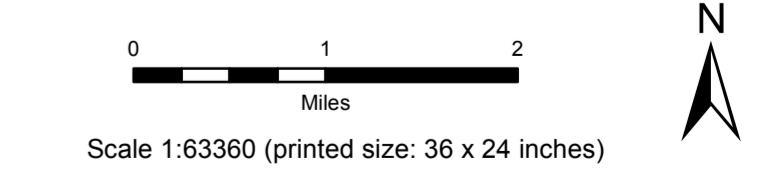
**B20 / C20** State Bridge or Culvert Identifier  
**B20 / C20** Town Bridge or Culvert Identifier

Vermont State Plane Coordinate System  
 North American Datum of 1983  
 SPCS\_Zone\_Identifier: 4400  
 Geospatial Reference System 80  
 5,000-meter grid, Easting - Northing



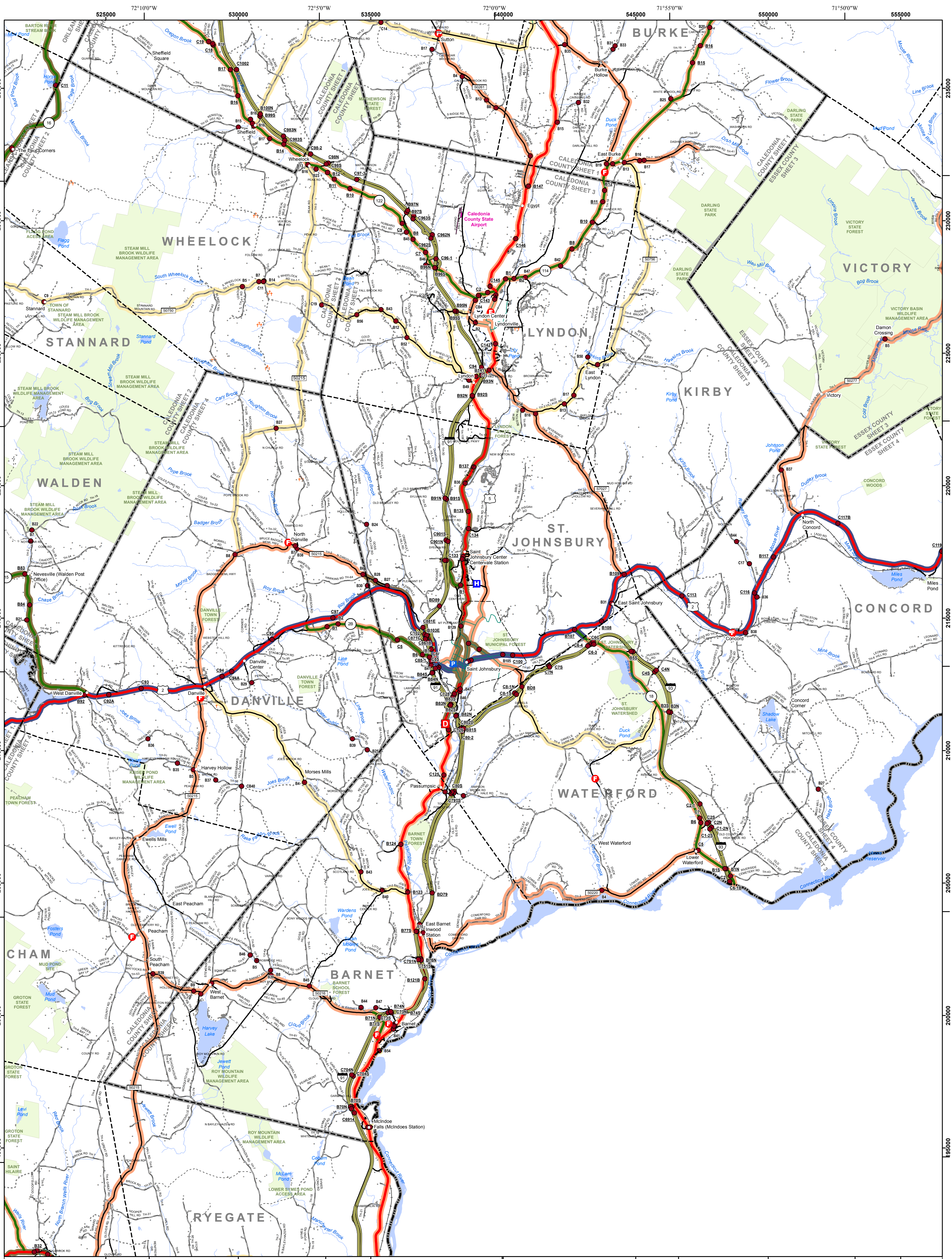
**VERMONT COUNTY - TOWN MAP SERIES**  
**CALEDONIA COUNTY**  
**SHEET 2 OF 4**

Prepared by the  
**Vermont Agency of Transportation**  
 Mapping Section  
 in cooperation with  
**U.S. Department of Transportation**  
 Federal Highway Administration  
 July 2015



Contact information: Vermont Agency of Transportation  
 Division of Policy, Planning and Intermodal Development, Mapping Section  
 1 National Life Drive, Montpelier, VT 05633-5001  
 Telephone: 802-628-2600

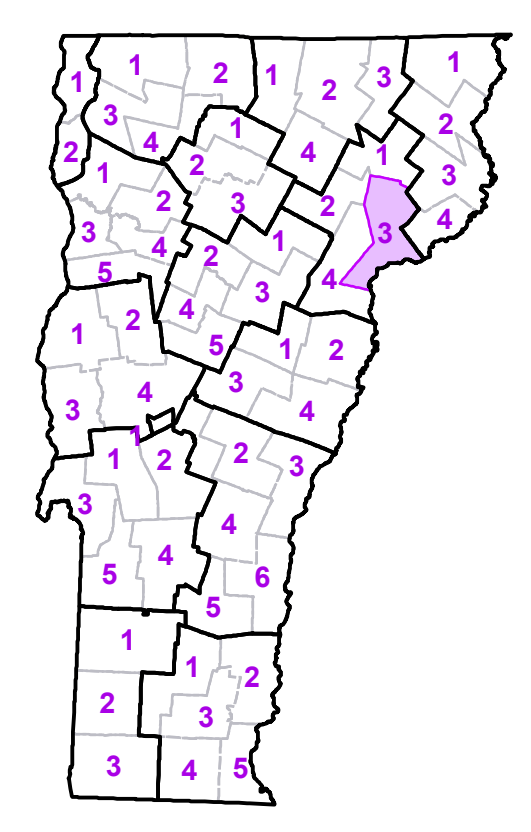
This map was funded in part through grants from the Federal Highway Administration, U.S. Department of Transportation. The representation of the authors expressed herein do not necessarily state or reflect those of the U. S. Department of Transportation.



- Interstate
- U.S. Route
- Vermont Route
- Minor Arterial or Collector
- Federal Aid Route
- Principal Arterial
- Minor Arterial
- Major Collector
- Minor Collector-not Federal Aid eligible
- VTrans District Office
- Emergency Response Site
- Fire Station
- Law Enforcement
- Hospital
- Building
- Cemetery
- Localities
- State Capital (Montpelier)
- Bridge or Culvert
- Water Body
- Stream or Brook
- Public Land
- Public Airport
- State Boundary
- County Boundary
- Town Boundary
- Village Boundary
- Urban Compact Boundary
- County Subtle

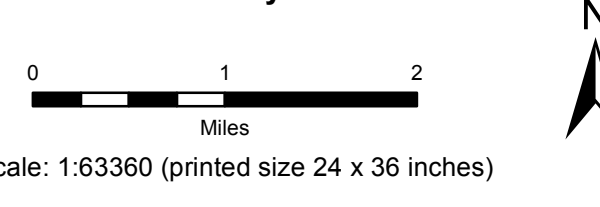
- B20 / C20 State Bridge or Culvert Identifier
  - B20 / C20 Town Bridge or Culvert Identifier
- Vermont State Plane Coordinate System  
 North American Datum of 1983  
 SPCS Zone Identifier: 4400  
 Geoidetic Reference System 80  
 5,000-meter grid, Easting - Northing

TOWN	TOWN	TOWN
Barnet	Lunenburg	Waterford
Burke	Lyndon	West Burke Village
Cabot	Lyndonville Village	Wheelock
Concord	Peacham	
Danville	Ryegate	
East Haven	Sheffield	
Glover	St. Johnsbury	
Granby	St. Johnsbury U.C.	
Greensboro	Stannard	
Groton	Sutton	
Groton Village	Victory	
Kirby	Walden	



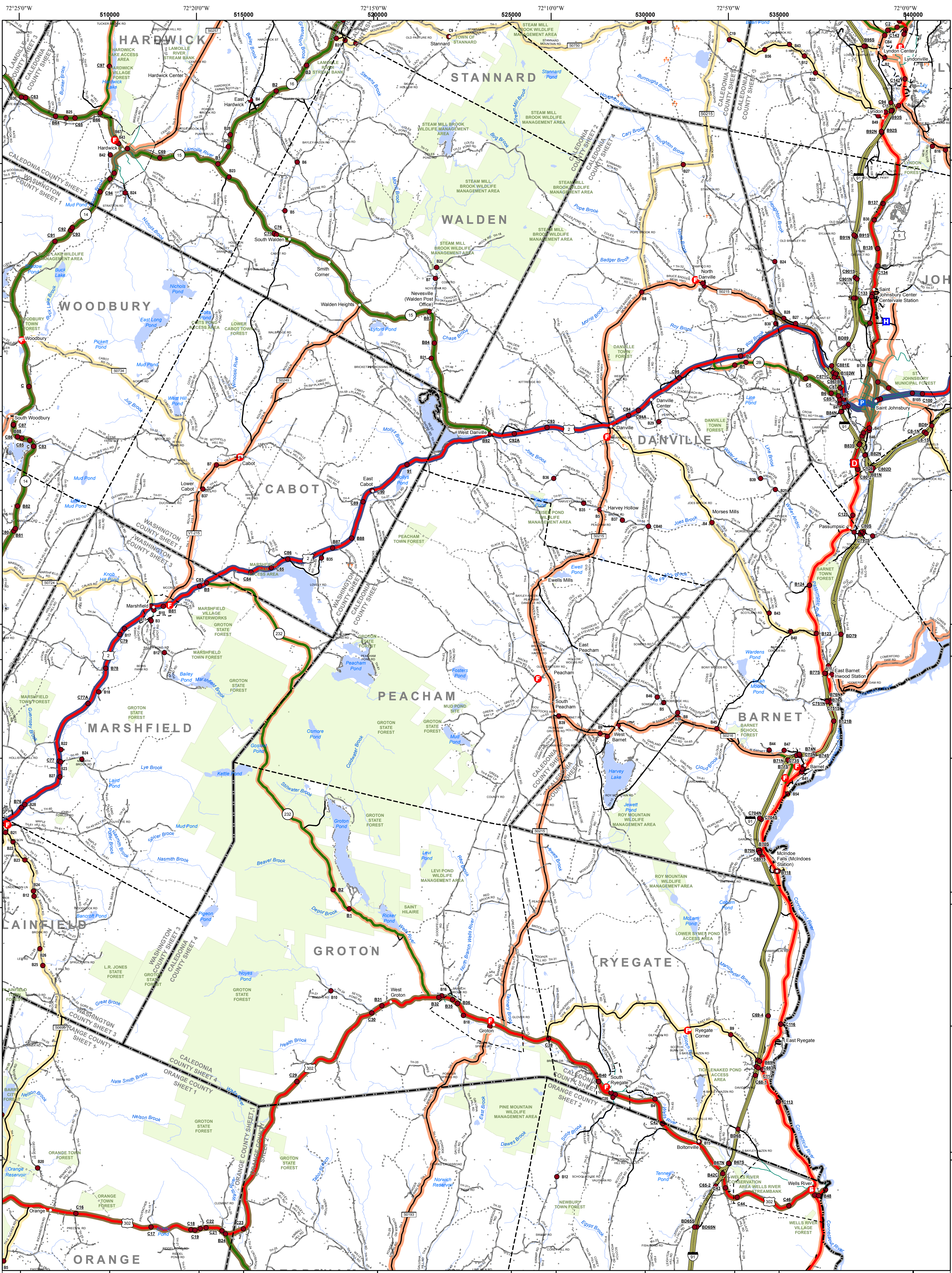
**VERMONT COUNTY - TOWN MAP SERIES**  
**CALEDONIA COUNTY**  
**SHEET 3 OF 4**

Prepared by the  
**Vermont Agency of Transportation**  
 Mapping Section  
 in cooperation with  
**U.S. Department of Transportation**  
 Federal Highway Administration  
 July 2015



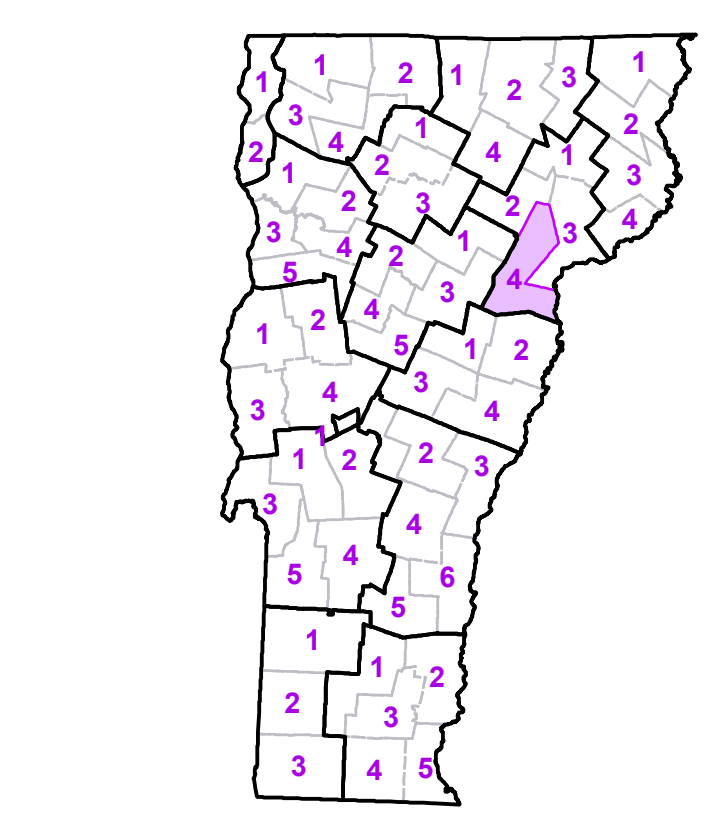
Contact Information: Vermont Agency of Transportation  
 Division of Policy, Planning and Intermodal Development, Mapping Section  
 1 National Life Drive, Montpelier, VT 05633-5001, Telephone: 802-828-2600

This map was funded in part through grants from the Federal Highway Administration, U.S. Department of Transportation. The representation of the authors expressed herein do not necessarily state or reflect those of the U.S. Department of Transportation.



- Interstate
- U.S. Route
- Vermont Route
- Minor Arterial or Collector
- Interstate
- US Route Divided
- US Route
- State Route Paved
- State Route Unpaved
- Town Highway Paved
- Town Highway Unpaved
- Unimproved or Impassible
- Discontinued Highway
- Town Legal Trail
- Railroad
- Federal Aid Route
- Principal Arterial
- Minor Arterial
- Major Collector
- Minor Collector-not Federal Aid eligible
- VTrans District Office
- Emergency Response Site
- Fire Station
- Law Enforcement
- Hospital
- Building
- Cemetery
- Localities
- State Capital (Montpelier)
- Bridge or Culvert
- Water Body
- Stream or Brook
- Public Land
- Public Airport
- State Boundary
- County Boundary
- Town Boundary
- Village Boundary
- Urban Compact Boundary
- County Subtle

TOWN	TOWN	TOWN
Barnet	Marshfield	Walden
Barre	Marshfield Village	Waterford
Cabot	Newbury	Wells River Village
Calais	Orange	Wheelock
Danville	Peacham	Wolcott
Greensboro	Plainfield	Woodbury
Groton	Ryegate	
Groton Village	South Ryegate Village	
Hardwick	St. Johnsbury	
Hardwick U.C.	St. Johnsbury U.C.	
Lyndon	Stannard	
Lyndonville Village	Topsham	



**VERMONT COUNTY - TOWN MAP SERIES**  
**CALEDONIA COUNTY**  
**SHEET 4 OF 4**

Prepared by the  
**Vermont Agency of Transportation**  
 Mapping Section  
 in cooperation with  
**U.S. Department of Transportation**  
 Federal Highway Administration  
 July 2015

Scale: 1:63360 (printed size 24 x 36 inches)

Contact Information: Vermont Agency of Transportation  
 Division of Policy, Planning and Intermodal Development, Mapping Section  
 1 National Life Drive, Montpelier, VT 05633-5001, Telephone: 802-828-2600

This map was funded in part through grants from the Federal Highway Administration, U.S. Department of Transportation. The representation of the authors expressed herein do not necessarily state or reflect those of the U.S. Department of Transportation.