

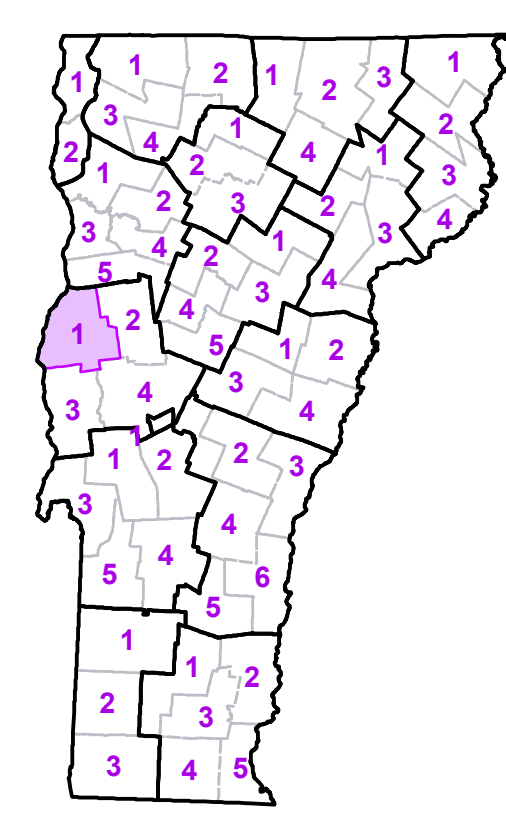


- Interstate
- U.S. Route
- Vermont Route
- Minor Arterial or Collector
- Interstate
- US Route Divided
- US Route
- State Route Paved
- State Route Unpaved
- Town Highway Paved
- Town Highway Unpaved
- Unimproved or Impassible
- Discontinued Highway
- Town Legal Trail
- Railroad

- Federal Aid Route
- Principal Arterial
- Minor Arterial
- Major Collector
- Minor Collector-not Federal Aid eligible
- VTrans District Office
- Emergency Response Site
- Fire Station
- Law Enforcement
- Hospital
- Building
- Cemetery
- Localities
- State Capital (Montpelier)
- Bridge or Culvert
- Water Body
- Stream or Brook
- Public Land
- Public Airport
- State Boundary
- County Boundary
- Town Boundary
- Village Boundary
- Urban Compact Boundary
- County Subtle

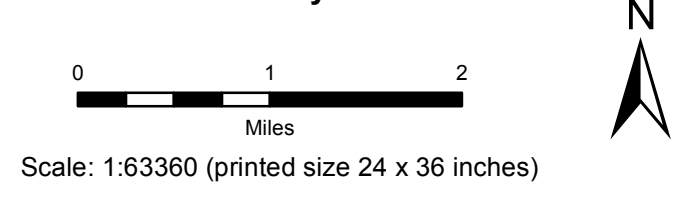
TOWN	TOWN
Addison	Panton
Bridport	Ripton
Bristol	Salisbury
Bristol U.C.	Shelburne
Charlotte	Shoreham
Cornwall	Starksboro
Ferrisburgh	Vergennes City
Hinesburg	Waltham
Middlebury	Weybridge
Middlebury U.C.	
Monkton	
New Haven	

Vermont State Plane Coordinate System
 North American Datum of 1983
 SPCS Zone Identifier: 4400
 Geodetic Reference System 80
 5,000-meter grid, Easting - Northing



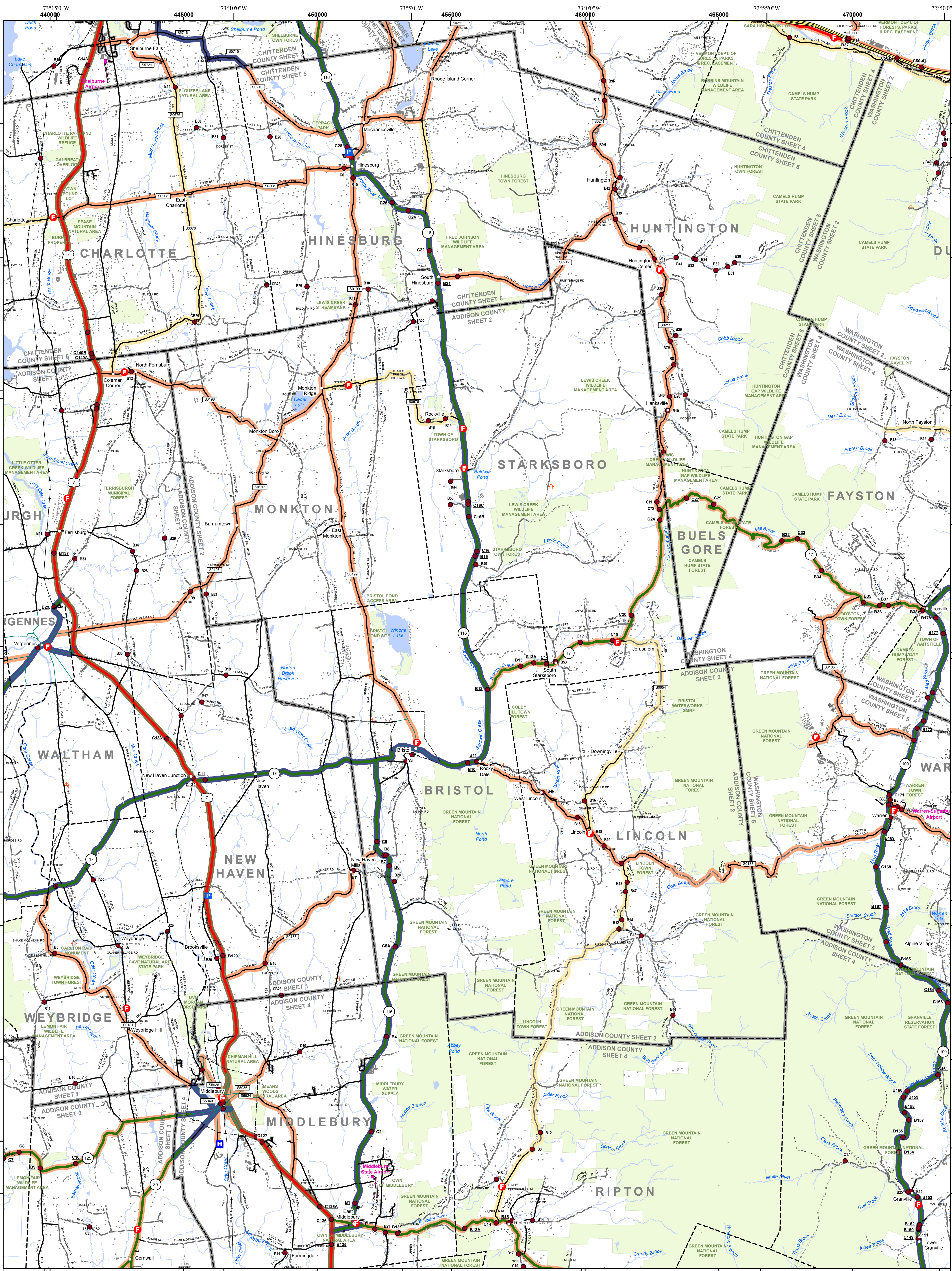
VERMONT COUNTY - TOWN MAP SERIES
ADDISON COUNTY
SHEET 1 OF 4

Prepared by the
Vermont Agency of Transportation
 Mapping Section
 in cooperation with
U.S. Department of Transportation
 Federal Highway Administration
 July 2015



Contact Information: Vermont Agency of Transportation
 Division of Policy, Planning and Intermodal Development, Mapping Section
 1 National Life Drive, Montpelier, VT 05633-5001, Telephone: 802-828-2600

This map was funded in part through grants from the Federal Highway Administration, U.S. Department of Transportation. The representation of the authors expressed herein do not necessarily state or reflect those of the U.S. Department of Transportation.

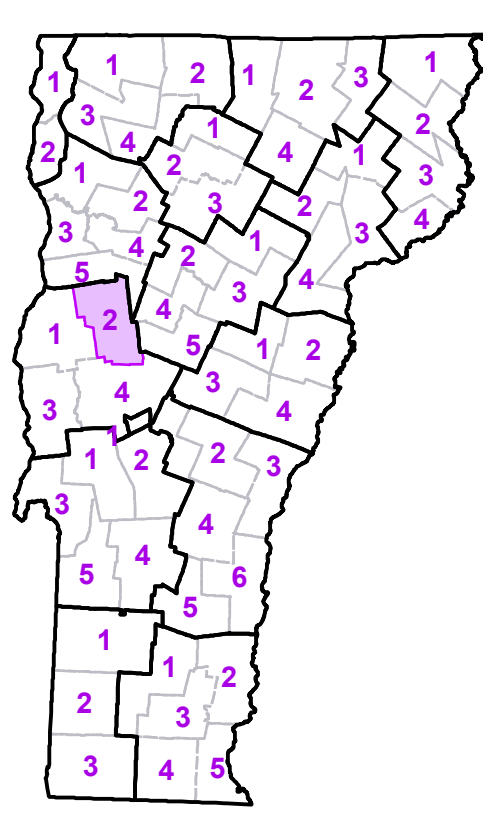


- Interstate
- U.S. Route
- Vermont Route
- Minor Arterial or Collector
- Federal Aid Route
- Principal Arterial
- Minor Arterial
- Major Collector
- Minor Collector-not Federal Aid eligible
- VTrans District Office
- Emergency Response Site
- Interstate
- US Route Divided
- US Route
- State Route Paved
- State Route Unpaved
- Town Highway Paved
- Town Highway Unpaved
- Unimproved or Impassible
- Discontinued Highway
- Town Legal Trail
- Railroad
- Public Land
- Public Airport
- State Boundary
- County Boundary
- Town Boundary
- Village Boundary
- Urban Compact Boundary
- County Subtle
- Fire Station
- Law Enforcement
- Hospital
- Building
- Cemetery
- Localities
- State Capital (Montpelier)
- Bridge or Culvert
- Water Body
- Stream or Brook

B20 / C20 State Bridge or Culvert Identifier
B20 / C20 Town Bridge or Culvert Identifier

Vermont State Plane Coordinate System
 North American Datum of 1983
 SPCS Zone Identifier: 4400
 Geodetic Reference System 80
 5,000-meter grid, Easting - Northing

TOWN	TOWN	TOWN
Addison	Hancock	Shelburne
Bolton	Hinesburg	St. George
Bridport	Huntington	Starksboro
Bristol	Lincoln	Vergennes City
Bristol U.C.	Middlebury	Waitsfield
Buels Gore	Middlebury U.C.	Waltham
Charlotte	Monkton	Warren
Cornwall	New Haven	Weybridge
Duxbury	Panton	Williston
Fayston	Richmond	
Ferrisburgh	Ripton	
Granville	Salisbury	



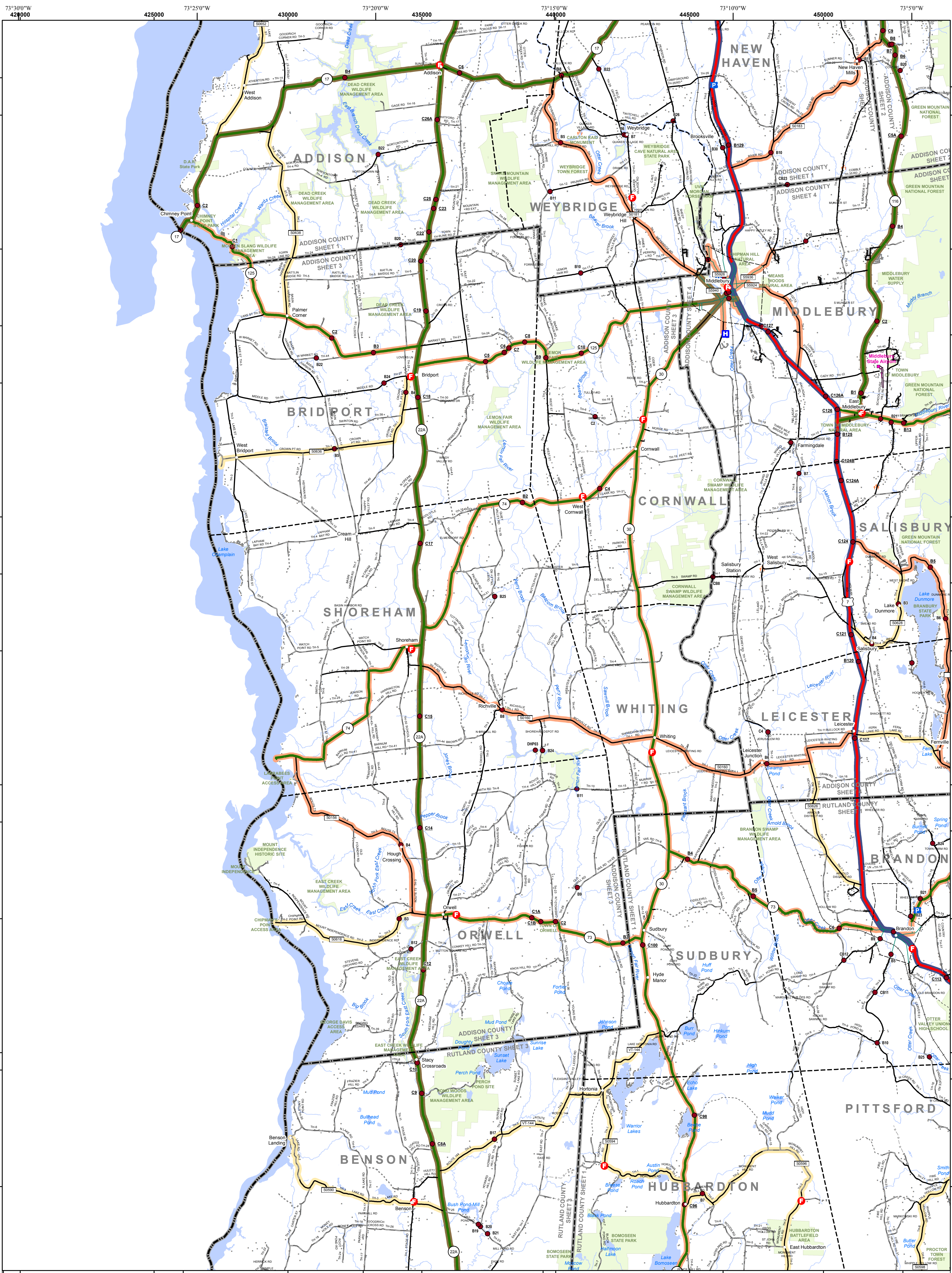
VERMONT COUNTY - TOWN MAP SERIES
ADDISON COUNTY
SHEET 2 OF 4

Prepared by the
Vermont Agency of Transportation
 Mapping Section
 in cooperation with
U.S. Department of Transportation
 Federal Highway Administration
 July 2015

Scale: 1:63360 (printed size 24 x 36 inches)

Contact Information: Vermont Agency of Transportation
 Division of Policy, Planning and Intermodal Development, Mapping Section
 1 National Life Drive, Montpelier, VT 05633-5001, Telephone: 802-828-2600

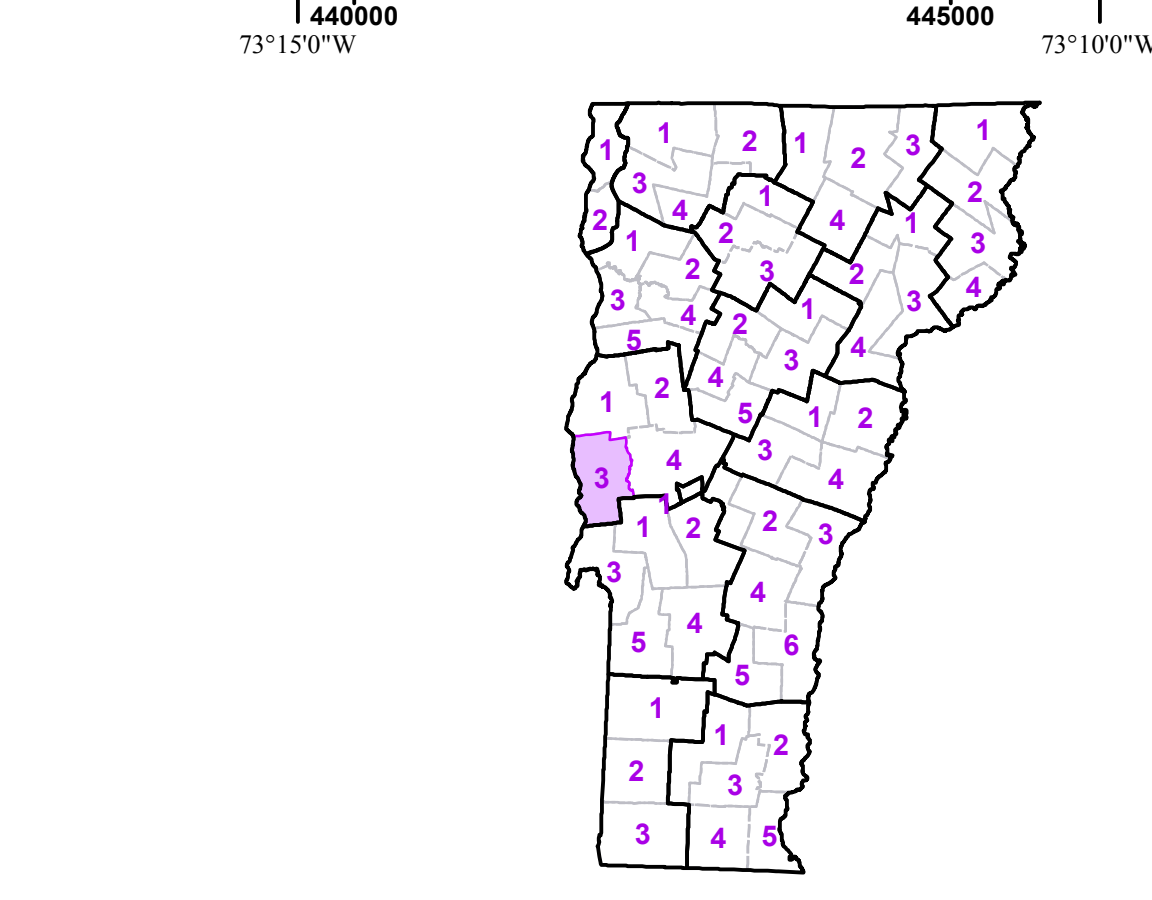
This map was funded in part through grants from the Federal Highway Administration, U.S. Department of Transportation. The representation of the authors expressed herein do not necessarily state or reflect those of the U.S. Department of Transportation.



- Interstate
- U.S. Route
- Vermont Route
- Minor Arterial or Collector
- Interstate
- US Route Divided
- US Route
- State Route Paved
- State Route Unpaved
- Town Highway Paved
- Town Highway Unpaved
- Unimproved or Impassible
- Discontinued Highway
- Town Legal Trail
- Railroad

- Federal Aid Route
- Principal Arterial
- Minor Arterial
- Major Collector
- Minor Collector-not Federal Aid eligible
- VTrans District Office
- Emergency Response Site
- Fire Station
- Law Enforcement
- Building
- Cemetery
- Localities
- State Capital (Montpelier)
- Bridge or Culvert
- Water Body
- Stream or Brook
- Public Land
- Public Airport
- State Boundary
- County Boundary
- Town Boundary
- Village Boundary
- Urban Compact Boundary
- County Subtle

TOWN	TOWN
Addison	Orwell
Benson	Pittsford
Brandon	Proctor
Brandon U.C.	Salisbury
Bridport	Shoreham
Bristol	Subury
Cornwall	Waltham
Hubbardton	Weybridge
Leicester	Whiting
Middlebury	
Middlebury U.C.	
New Haven	



VERMONT COUNTY - TOWN MAP SERIES
ADDISON COUNTY
SHEET 3 OF 4

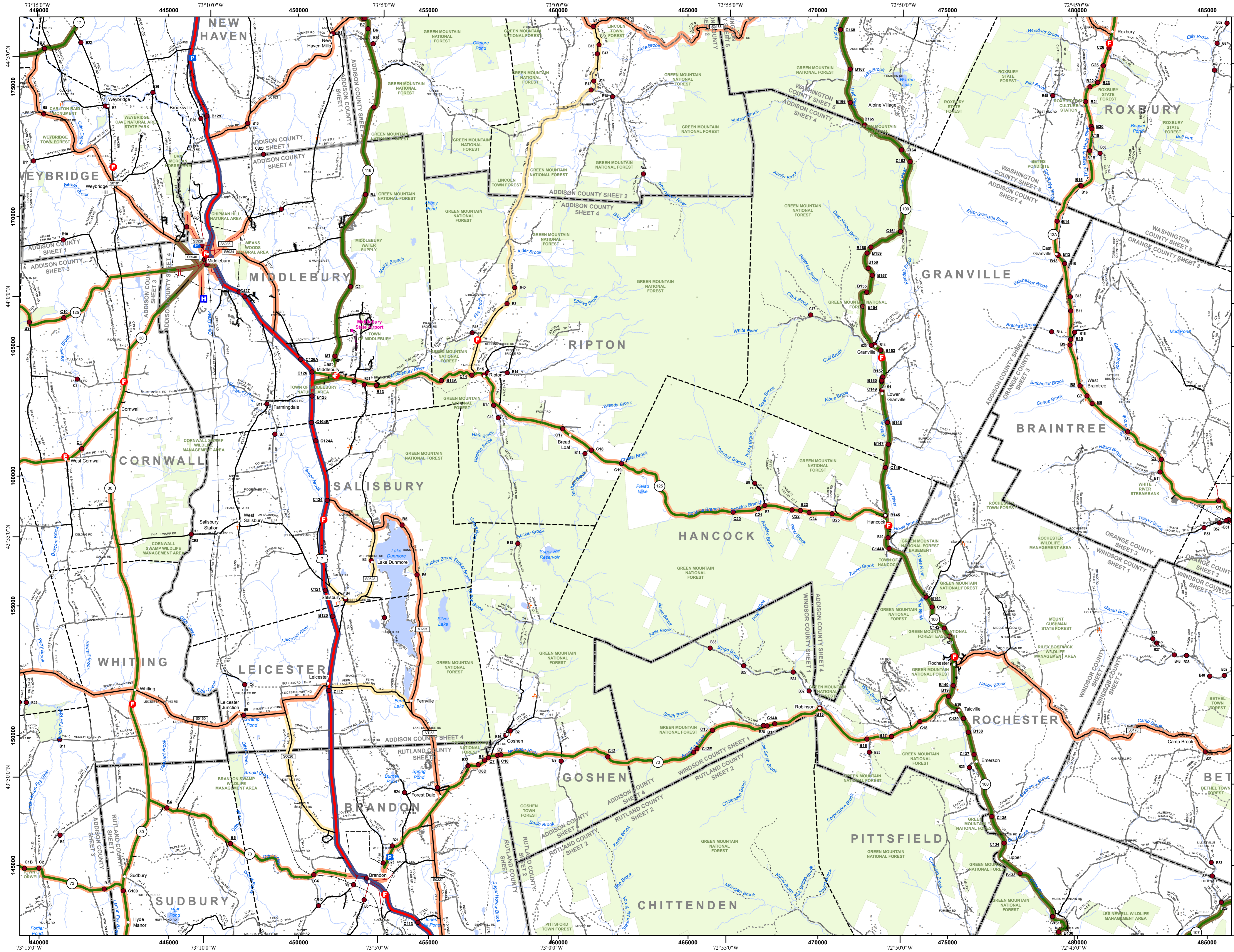
Prepared by the
Vermont Agency of Transportation
 Mapping Section
 in cooperation with
U.S. Department of Transportation
 Federal Highway Administration
 July 2015

0 1 2
 Miles

Scale: 1:63360 (printed size 24 x 36 inches)

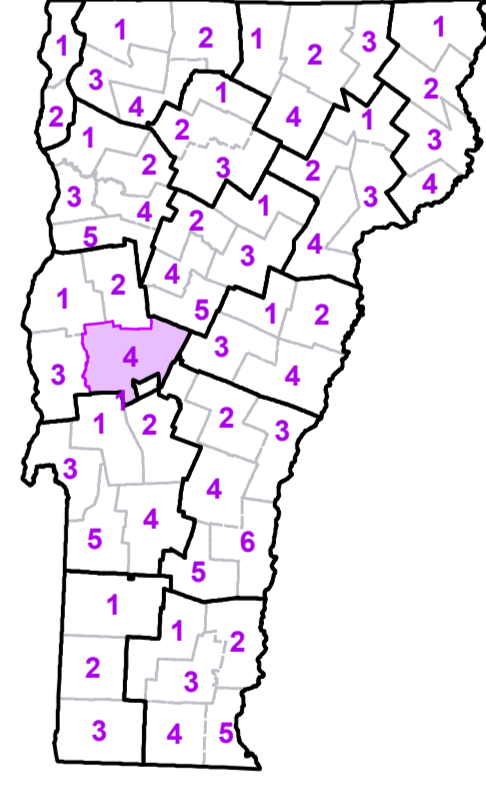
Contact Information: Vermont Agency of Transportation
 Division of Policy, Planning and Intermodal Development, Mapping Section
 1 National Life Drive, Montpelier, VT 05633-5001, Telephone: 802-828-2600

This map was funded in part through grants from the Federal Highway Administration, U.S. Department of Transportation. The representation of the authors expressed herein do not necessarily state or reflect those of the U.S. Department of Transportation.



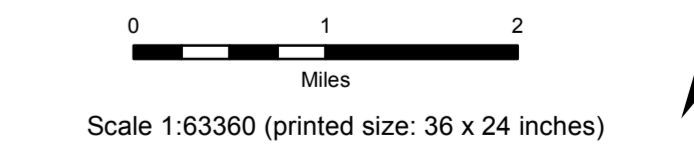
- Interstate
 - U.S. Route
 - Vermont Route
 - Minor Arterial or Collector
 - Interstate
 - US Route Divided
 - US Route
 - State Route Paved
 - State Route Unpaved
 - Town Highway Paved
 - Town Highway Unpaved
 - Unimproved or Impassible
 - Discontinued Highway
 - Town Legal Trail
 - Railroad
- Federal Aid Route**
- Principal Arterial
 - Minor Arterial
 - Major Collector
 - Minor Collector-not Federal Aid eligible
- Emergency Response Site**
- VTrans District Office
 - Fire Station
 - Law Enforcement
 - Hospital
 - Building
 - Cemetery
 - Localities
 - State Capital (Montpelier)
 - Bridge or Culvert
 - Water Body
 - Stream or Brook
 - Public Land
 - Public Airport
- Boundaries**
- State Boundary
 - County Boundary
 - Town Boundary
 - Village Boundary
 - Urban Compact Boundary
 - County Subtle
- | TOWN |
|-----------------|
| Addison |
| Bethel |
| Braintree |
| Brandon |
| Brandon U.C. |
| Bridport |
| Bristol |
| Brookfield |
| Chittenden |
| Cornwall |
| Goshen |
| Granville |
| Hancock |
| Leicester |
| Lincoln |
| Middlebury |
| Middlebury U.C. |
| New Haven |
| Orwell |
| Pittsfield |
| Randolph |
| Randolph U.C. |
| Ripton |
| Rochester |
| Roxbury |
| Shoreham |
| Stockbridge |
| Sudbury |
| Waltham |
| Warren |
| Weybridge |
| Whiting |
- B20 / C20** State Bridge or Culvert Identifier
B20 / C20 Town Bridge or Culvert Identifier

Vermont State Plane Coordinate System
 North American Datum of 1983
 SPCS_Zone_Identifier: 4400
 Geoidic Reference System 80
 5,000-meter grid, Easting - Northing



VERMONT COUNTY - TOWN MAP SERIES
ADDISON COUNTY
SHEET 4 OF 4

Prepared by the
Vermont Agency of Transportation
 Mapping Section
 in cooperation with
U.S. Department of Transportation
 Federal Highway Administration
 July 2015



Contact information: Vermont Agency of Transportation
 Division of Policy, Planning and Intermodal Development, Mapping Section
 1 National Life Drive, Montpelier, VT 05633-5001
 Telephone: 802-828-2600

This map was funded in part through grants from the Federal Highway Administration, U.S. Department of Transportation. The representation of the authors expressed herein do not necessarily state or reflect those of the U. S. Department of Transportation.