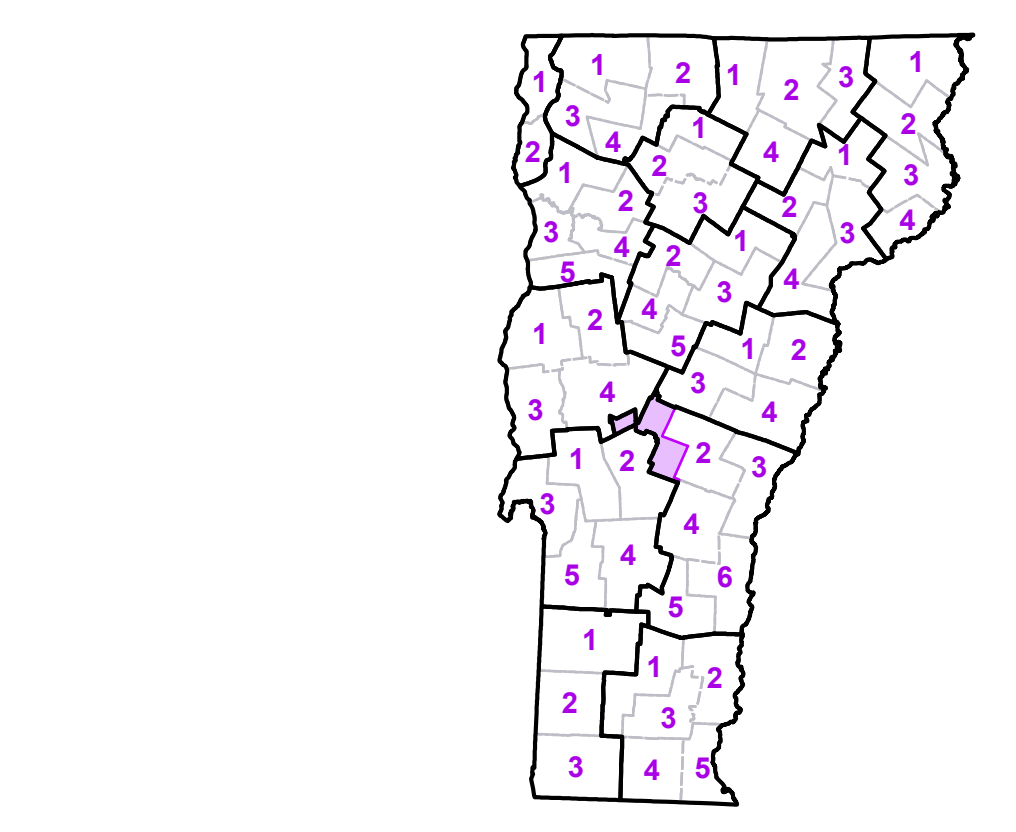


- Interstate
 - U.S. Route
 - Vermont Route
 - Minor Arterial or Collector
 - Interstate
 - US Route Divided
 - US Route
 - State Route Paved
 - State Route Unpaved
 - Town Highway Paved
 - Town Highway Unpaved
 - Umimproved or Impassible
 - Town Legal Trail
 - Discontinued Highway
 - Railroad
- Federal Aid Route
 - Principal Arterial
 - Minor Arterial
 - Major Collector
 - Federal Aid Urban
 - Minor Collector-not Federal Aid eligible
 - VTrans District Office
 - Police Station
 - Fire Station
 - Hospital
 - Cemetery
 - Building
 - Localities
 - State Capital (Montpelier)
 - Bridge or Culvert
 - Water Body
 - Stream or Brook
- Public Land
 - Public Airport
 - State Boundary
 - County Boundary
 - Town Boundary
 - Village Boundary
 - Urban Compact Boundary
 - County Subtle

TOWN	TOWN	TOWN
Barnard	Mendon	Rutland City
Bethel	Pittsfield	Salisbury
Braintree	Pittsford	Stockbridge
Brandon	Proctor	West Rutland
Bridgewater	Proctor U.C.	Woodstock
Brookfield	Randolph	
Chittenden	Randolph U.C.	
Goshen	Ripton	
Granville	Rochester	
Hancock	Roxbury	
Killington	Royalton	
Leicester	Rutland	



VERMONT COUNTY - TOWN MAP SERIES
WINDSOR COUNTY SHEET 1 OF 6

Prepared by the
Vermont Agency of Transportation Mapping Unit
 in cooperation with
U.S. Department of Transportation Federal Highway Administration

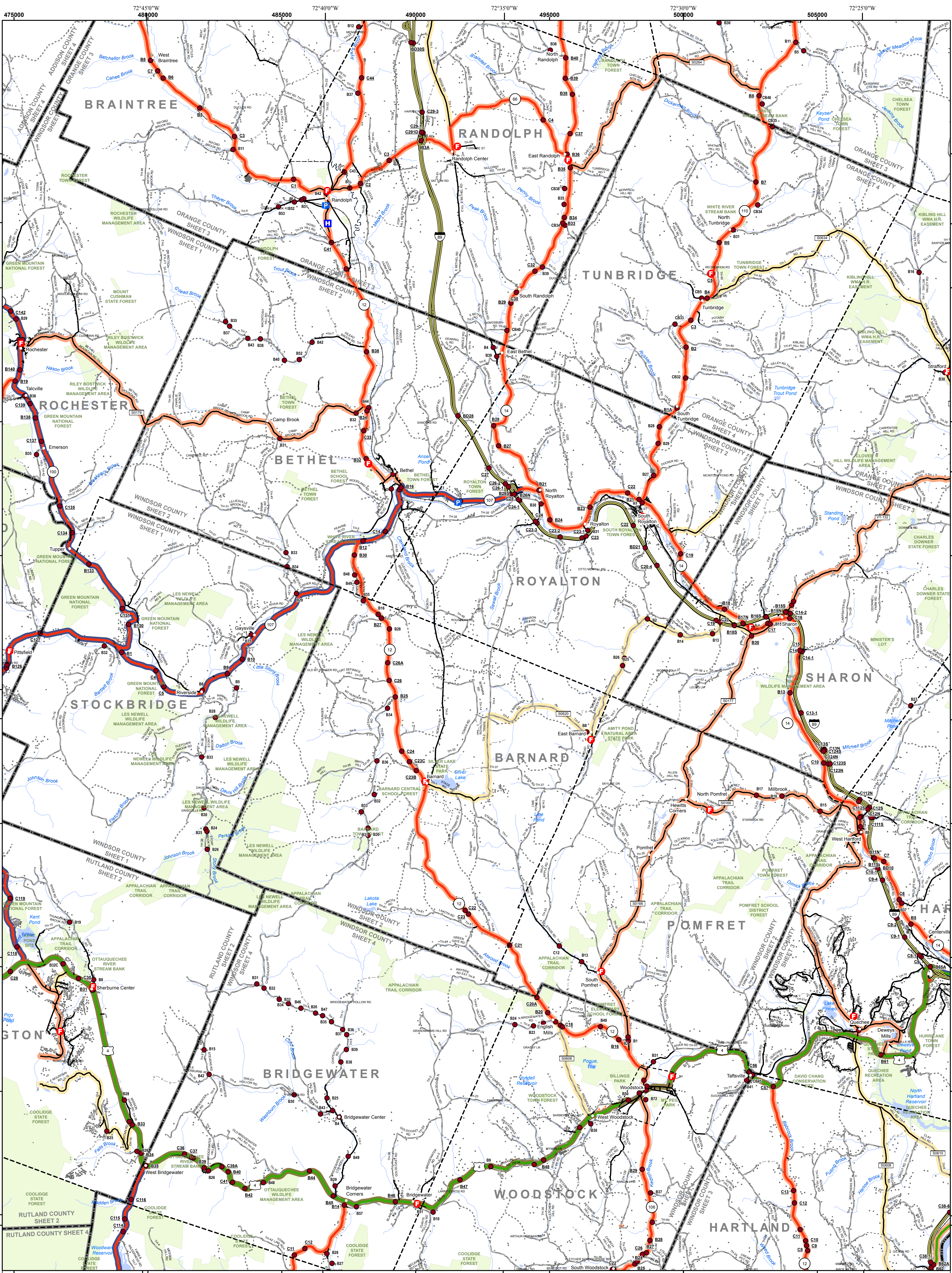
January 2012

0 1 2
 Miles

Scale: 1:63360 (printed size 24 x 36 inches)

Contact Information: Vermont Agency of Transportation
 Division of Policy, Planning and Intermodal Development, Mapping Unit
 1 National Life Drive, Montpelier, VT 05633-5001, Telephone: 802-928-2600

This map was funded in part through grants from the Federal Highway Administration, U.S. Department of Transportation. The representation of the authors expressed herein do not necessarily state or reflect those of the U. S. Department of Transportation.



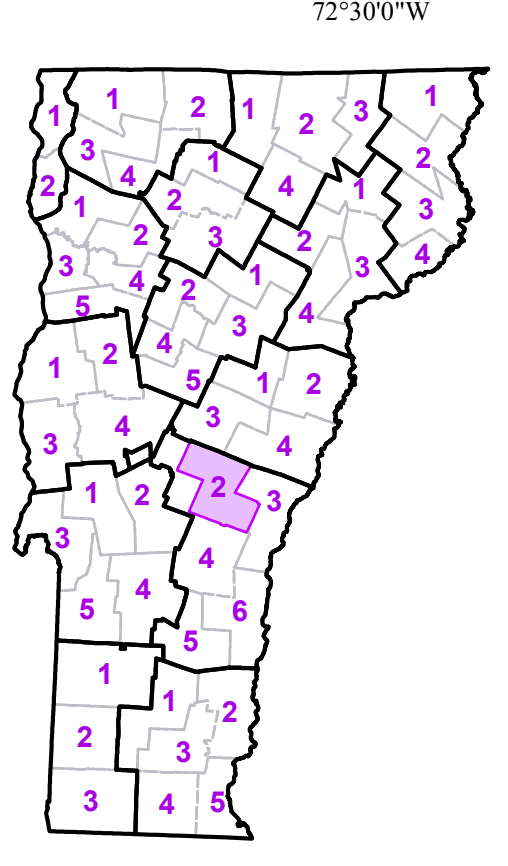
- Interstate
- U.S. Route
- Vermont Route
- Minor Arterial or Collector
- Interstate
- US Route Divided
- US Route
- State Route Paved
- State Route Unpaved
- Town Highway Paved
- Town Highway Unpaved
- Unimproved or Impassible
- Town Legal Trail
- Discontinued Highway
- Railroad

- Federal Aid Route
- Principal Arterial
- Minor Arterial
- Major Collector
- Federal Aid Urban
- Minor Collector-not Federal Aid eligible
- VTrans District Office
- Police Station
- Fire Station
- Hospital
- Cemetery
- Building
- Localities
- State Capital (Montpelier)
- Bridge or Culvert
- Water Body
- Stream or Brook

- Public Land
- Public Airport
- State Boundary
- County Boundary
- Town Boundary
- Village Boundary
- Urban Compact Boundary
- County Subtitle

TOWN	TOWN	TOWN
Barnard	Norwich	Tunbridge
Bethel	Pittsfield	Vershire
Braintree	Plymouth	Woodstock
Bridgewater	Pomfret	Woodstock Village
Brookfield	Randolph	
Chelsea	Randolph U.C.	
Granville	Rochester	
Hancock	Royalton	
Hartford	Sharon	
Hartland	Shrewsbury	
Killington	Stockbridge	
Mendon	Stratford	

- B20 / C20 State Bridge or Culvert Identifier
- B20 / C20 Town Bridge or Culvert Identifier



VERMONT COUNTY - TOWN MAP SERIES
WINDSOR COUNTY SHEET 2 OF 6

Prepared by the
Vermont Agency of Transportation Mapping Unit
 in cooperation with
U.S. Department of Transportation Federal Highway Administration

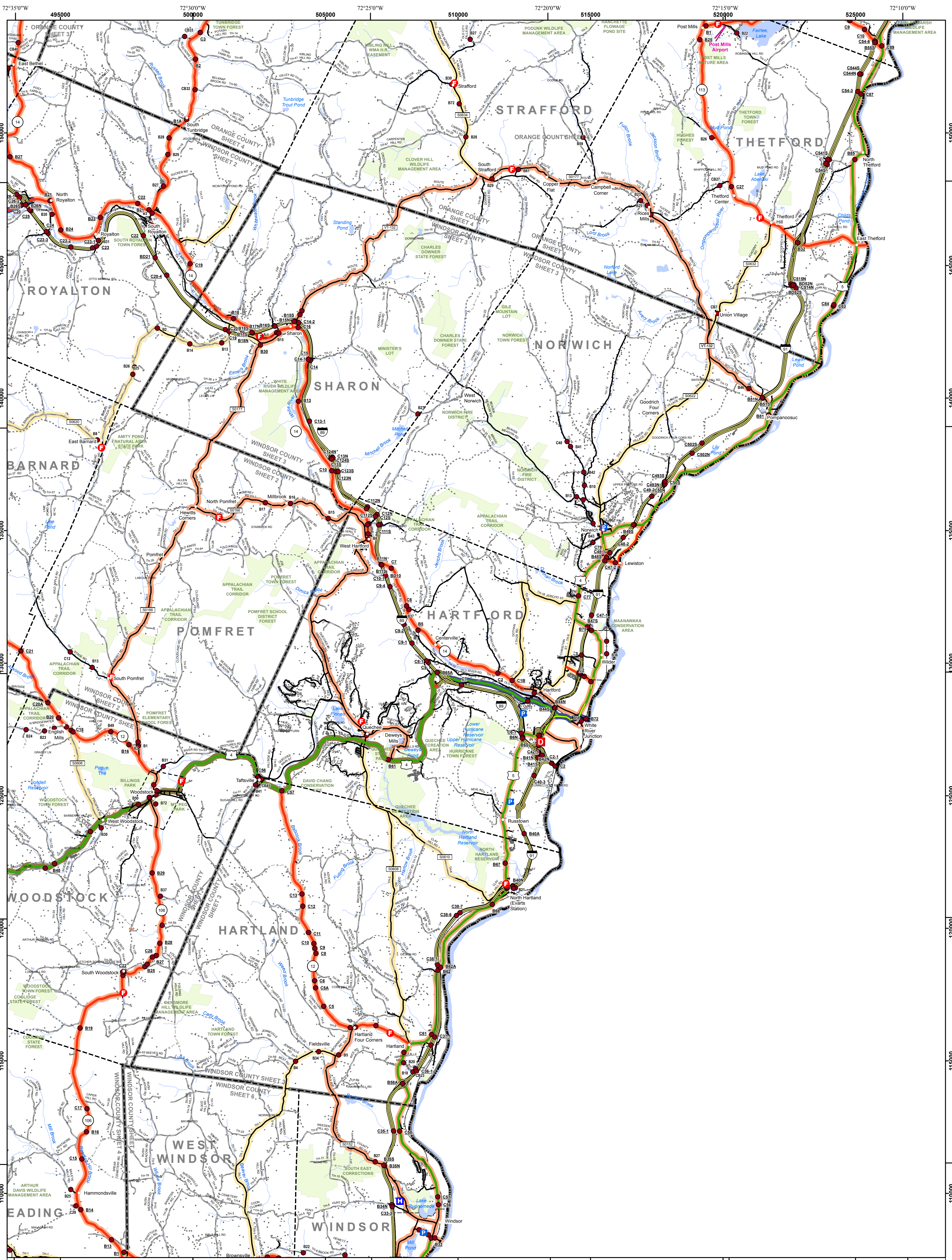
January 2012

Scale: 1:63360 (printed size 24 x 36 inches)

0 1 2
 Miles

Contact Information: Vermont Agency of Transportation
 Division of Policy, Planning and Intermodal Development, Mapping Unit
 1 National Life Drive, Montpelier, VT 05633-5001, Telephone: 802-928-2600

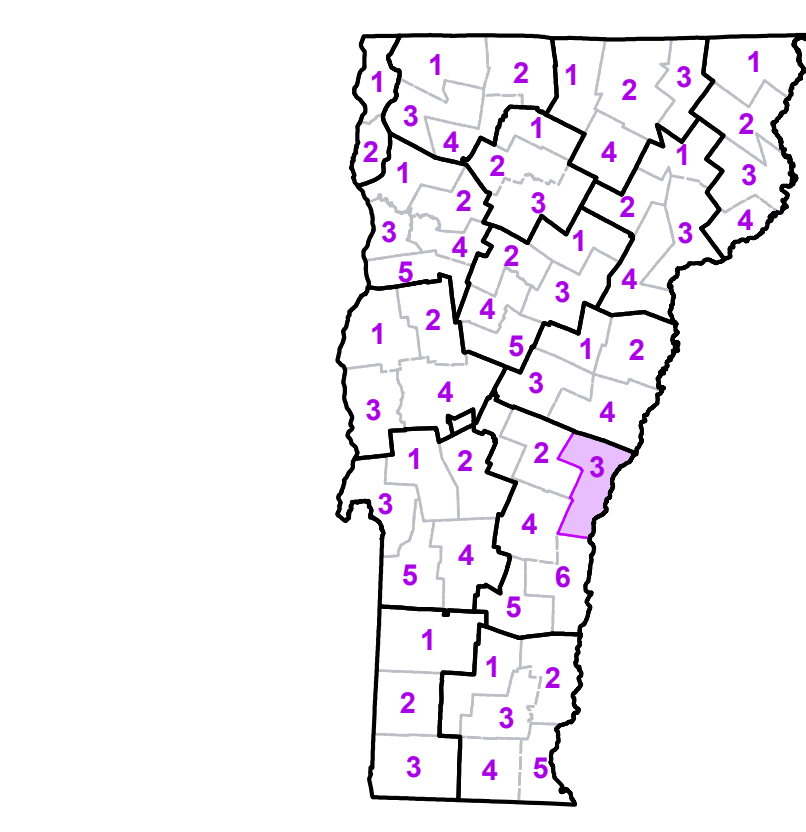
This map was funded in part through grants from the Federal Highway Administration, U.S. Department of Transportation. The representation of the authors expressed herein do not necessarily state or reflect those of the U. S. Department of Transportation.



- Interstate
- U.S. Route
- Vermont Route
- Minor Arterial or Collector
- Interstate
- US Route Divided
- US Route
- State Route Paved
- State Route Unpaved
- Town Highway Paved
- Town Highway Unpaved
- Unimproved or Impassible
- Town Legal Trail
- Discontinued Highway
- Railroad

- Federal Aid Route
- Principal Arterial
- Minor Arterial
- Major Collector
- Federal Aid Urban
- Minor Collector-not Federal Aid eligible
- VTrans District Office
- Police Station
- Fire Station
- Hospital
- Cemetery
- Building
- Localities
- State Capital (Montpelier)
- Bridge or Culvert
- Water Body
- Stream or Brook

TOWN	TOWN
Barnard	Stratford
Bethel	Thetford
Bridgewater	Tunbridge
Fairlee	West Fairlee
Hartford	West Windsor
Hartland	White River Jct. Urban Compact
Nonich	Wilder Urban Compact
Pomfret	Windsor
Randolph	Windsor U.C.
Reading	Woodstock
Royalton	Woodstock Village
Sharon	



VERMONT COUNTY - TOWN MAP SERIES
WINDSOR COUNTY SHEET 3 OF 6

Prepared by the
Vermont Agency of Transportation Mapping Unit
 in cooperation with
U.S. Department of Transportation Federal Highway Administration

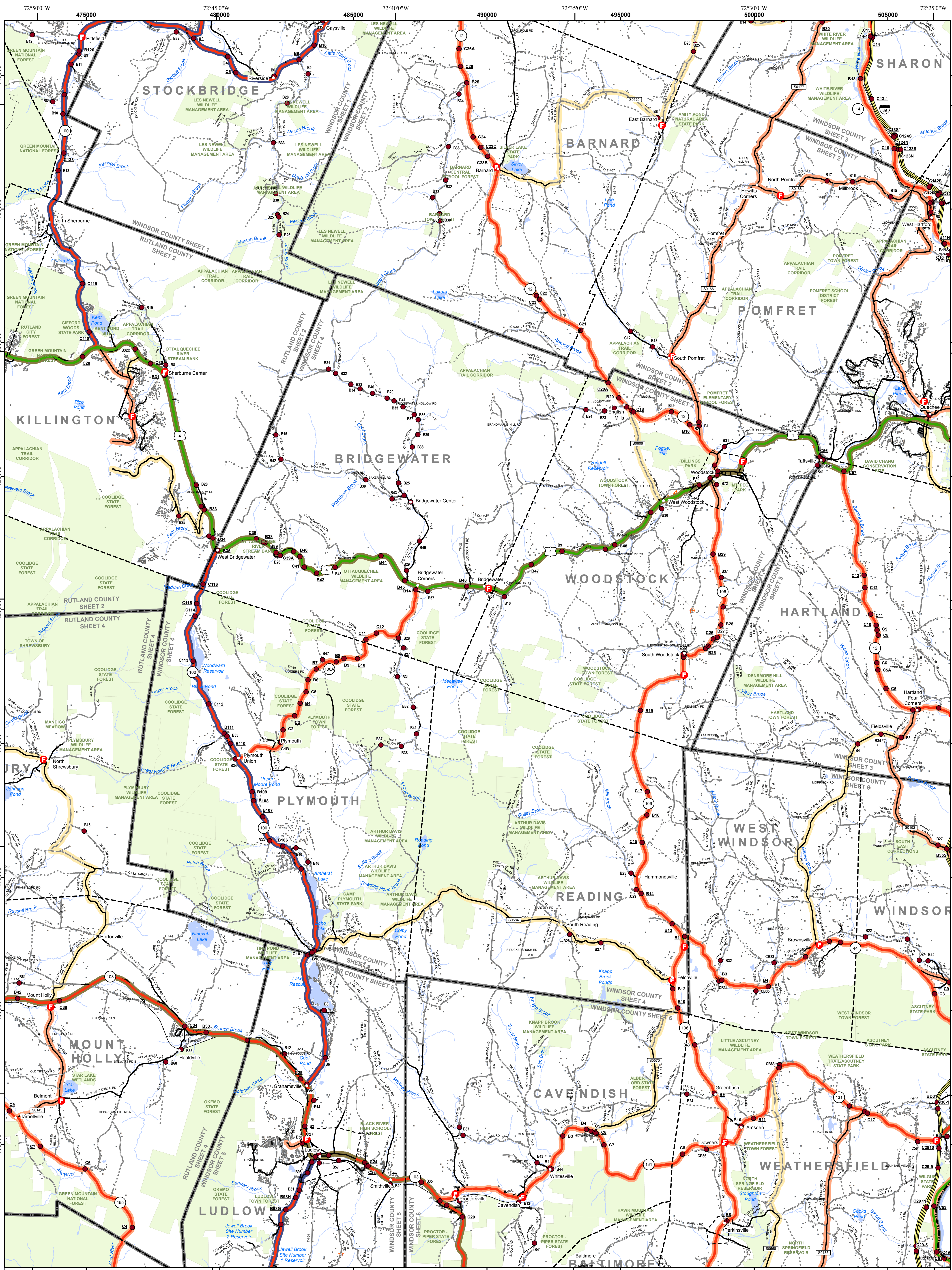
January 2012

0 1 2
 Miles

Scale: 1:63360 (printed size 24 x 36 inches)

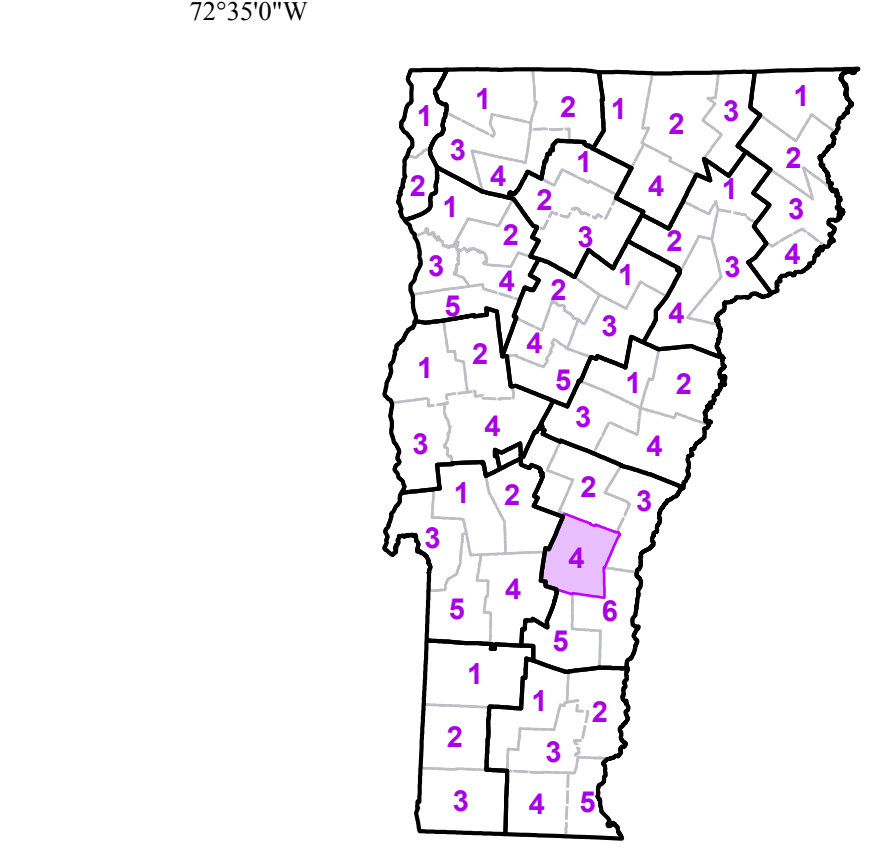
Contact Information: Vermont Agency of Transportation
 Division of Policy, Planning and Intermodal Development, Mapping Unit
 1 National Life Drive, Montpelier, VT 05633-5001, Telephone: 802-928-2600

This map was funded in part through grants from the Federal Highway Administration, U.S. Department of Transportation. The representation of the authors expressed herein do not necessarily state or reflect those of the U.S. Department of Transportation.



- Interstate
 - U.S. Route
 - Vermont Route
 - Minor Arterial or Collector
 - Interstate
 - US Route Divided
 - US Route
 - State Route Paved
 - State Route Unpaved
 - Town Highway Paved
 - Town Highway Unpaved
 - Unimproved or Impassible
 - Town Legal Trail
 - Discontinued Highway
 - Railroad
- Federal Aid Route
 - Principal Arterial
 - Minor Arterial
 - Major Collector
 - Federal Aid Urban
 - Minor Collector-not Federal Aid eligible
 - VTrans District Office
 - Police Station
 - Fire Station
 - Hospital
 - Cemetery
 - Building
 - Localities
 - State Capital (Montpelier)
 - Bridge or Culvert
 - Water Body
 - Stream or Brook
- Public Land
 - Public Airport
 - State Boundary
 - County Boundary
 - Town Boundary
 - Village Boundary
 - Urban Compact Boundary
 - County Subtle
- B20 / C20 State Bridge or Culvert Identifier
 - B20 / C20 Town Bridge or Culvert Identifier

TOWN	TOWN	TOWN
Barnard	North	Weston
Barnard	Perkinsville Village	Windsor
Bridgewater	Pittsfield	Woodstock
Cavendish	Plymouth	Woodstock Village
Chittenden	Pomfret	
Hartford	Reading	
Hartland	Royalton	
Killington	Sharon	
Ludlow	Shrewsbury	
Ludlow Village	Stockbridge	
Mendon	Weathersfield	
Mount Holly	West Windsor	



VERMONT COUNTY - TOWN MAP SERIES
WINDSOR COUNTY SHEET 4 OF 6

Prepared by the
Vermont Agency of Transportation Mapping Unit
 in cooperation with
U.S. Department of Transportation Federal Highway Administration

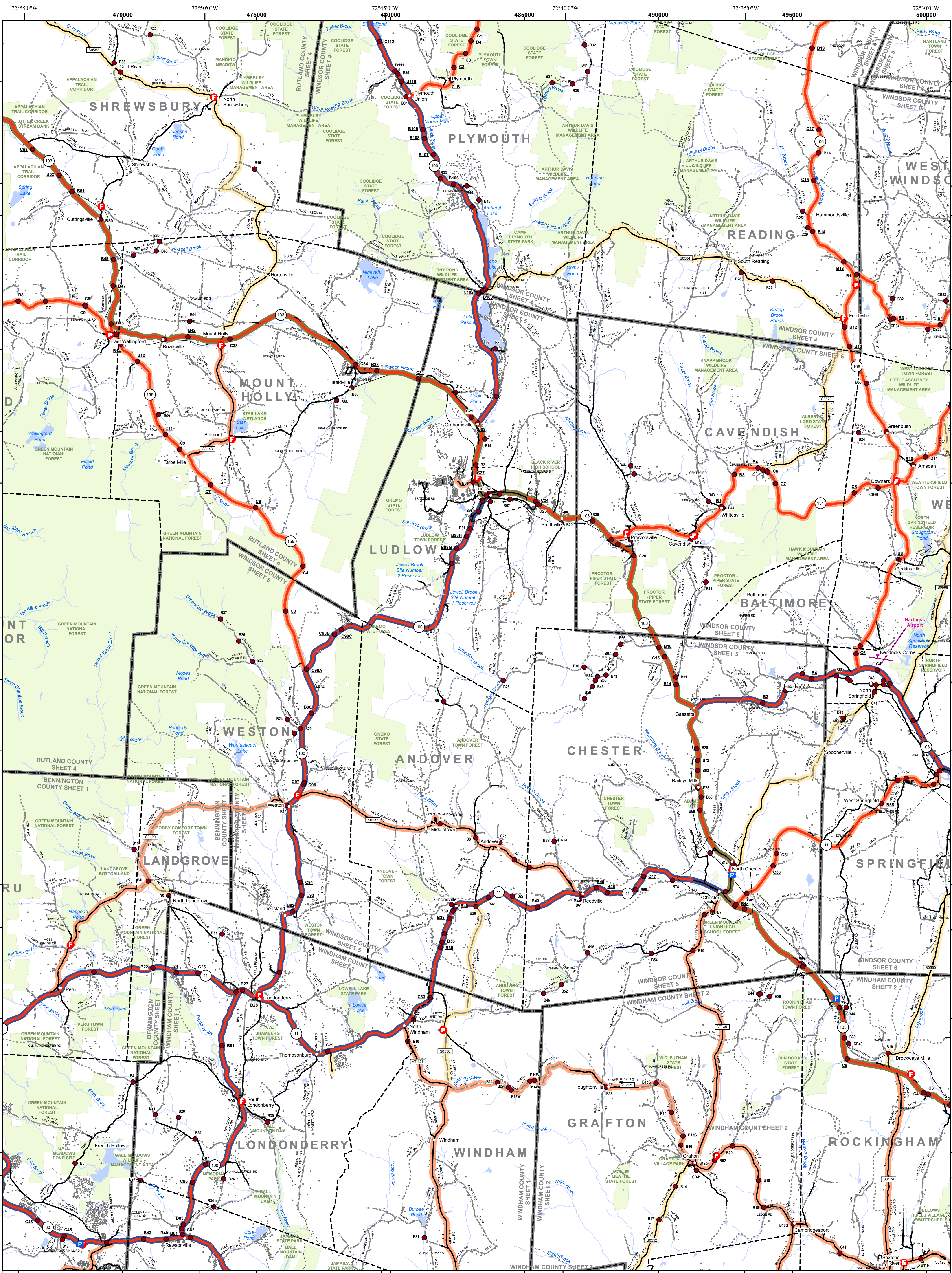
January 2012

0 1 2
 Miles

Scale: 1:63360 (printed size 24 x 36 inches)

Contact Information: Vermont Agency of Transportation
 Division of Policy, Planning and Intermodal Development, Mapping Unit
 1 National Life Drive, Montpelier, VT 05633-5001, Telephone: 802-928-2600

This map was funded in part through grants from the Federal Highway Administration. The representation of the authors expressed herein do not necessarily state or reflect those of the U. S. Department of Transportation.



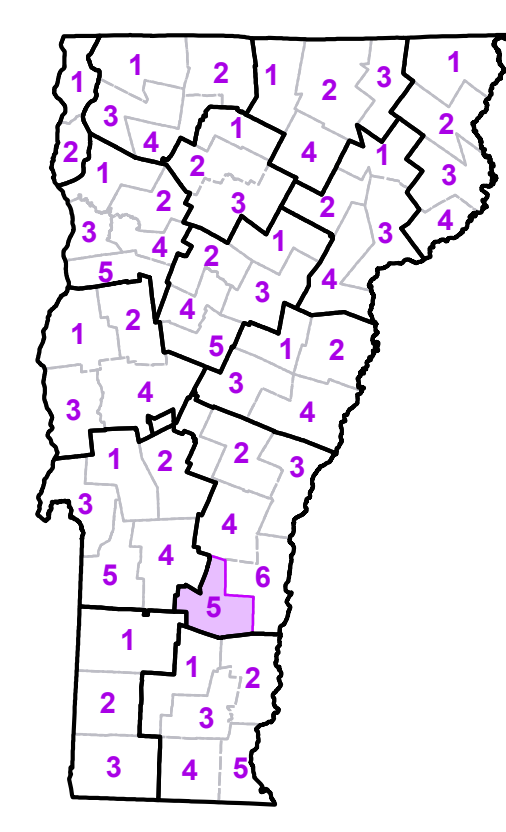
- Interstate
- U.S. Route
- Vermont Route
- Minor Arterial or Collector
- Interstate
- US Route Divided
- US Route
- State Route Paved
- State Route Unpaved
- Town Highway Paved
- Town Highway Unpaved
- Unimproved or Impassible
- Town Legal Trail
- Discontinued Highway
- Railroad

- Federal Aid Route
- Principal Arterial
- Minor Arterial
- Major Collector
- Federal Aid Urban
- Minor Collector-not Federal Aid eligible
- VTrans District Office
- Police Station
- Fire Station
- Hospital
- Cemetery
- Building
- Localities
- State Capital (Montpelier)
- Bridge or Culvert
- Water Body
- Stream or Brook

- Public Land
- Public Airport
- State Boundary
- County Boundary
- Town Boundary
- Village Boundary
- Urban County Boundary
- County Subtle
- B20 / C20 State Bridge or Culvert Identifier
- B20 / C20 Town Bridge or Culvert Identifier

Vermont State Plane Coordinate System
 North American Datum of 1983
 SPCS Zone Identifier: 4400
 Geodetic Reference System 80
 5,000-meter grid, Easting - Northing

TOWN	TOWN	TOWN
Andover	Ludlow Village	Springfield U.C.
Athens	Mount Holly	Townshend
Baltimore	Mount Tabor	Wallingford
Cavendish	North Springfield U.C.	Weathersfield
Chester	Perkinsville Village	West Windsor
Chester-Chester Depot U.C.	Peru	Weston
Grafton	Plymouth	Windham
Hartland	Reading	Winhall
Jamaica	Rockingham	Woodstock
Landgrove	Saxtons River Village	
Londonderry	Shrewsbury	
Ludlow	Springfield	



VERMONT COUNTY - TOWN MAP SERIES
WINDSOR COUNTY SHEET 5 OF 6

Prepared by the
 Vermont Agency of Transportation
 Mapping Unit
 in cooperation with
 U.S. Department of Transportation
 Federal Highway Administration

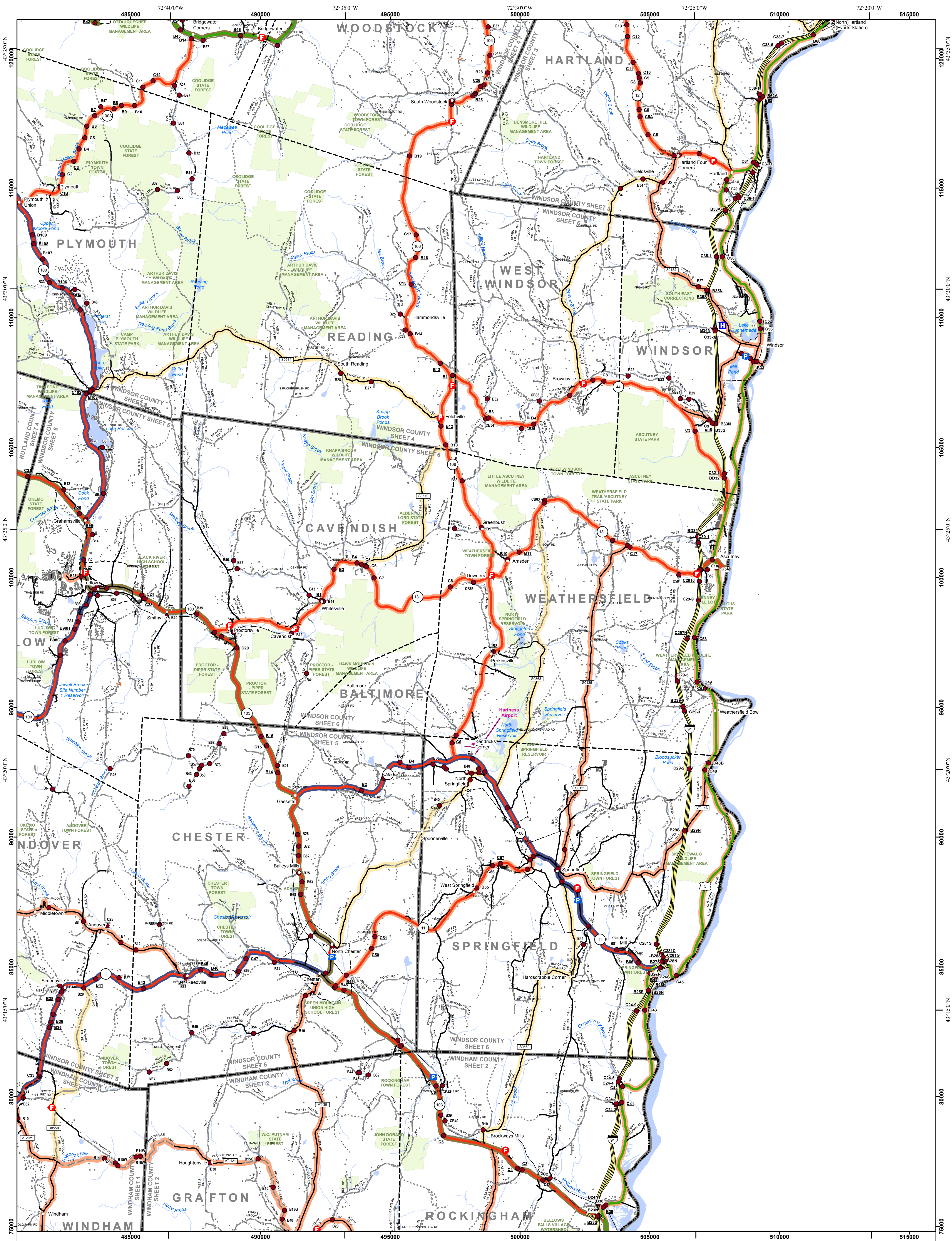
January 2012

0 1 2
 Miles

Scale: 1:63360 (printed size 24 x 36 inches)

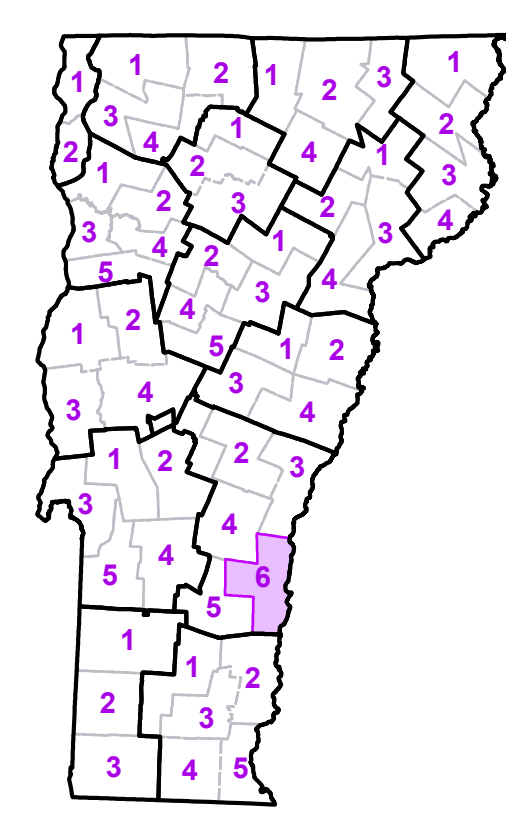
Contact Information: Vermont Agency of Transportation
 Division of Policy, Planning and Intermodal Development, Mapping Unit
 1 National Life Drive, Montpelier, VT 05633-5001, Telephone: 802-928-2600

This map was funded in part through grants from the Federal Highway Administration, U.S. Department of Transportation. The representation of the authors expressed herein do not necessarily state or reflect those of the U. S. Department of Transportation.



- Interstate
 - U.S. Route
 - Vermont Route
 - Minor Arterial or Collector
 - Interstate
 - US Route Divided
 - US Route
 - State Route Paved
 - State Route Unpaved
 - Town Highway Paved
 - Town Highway Unpaved
 - Unimproved or Impassible
 - Town Legal Trail
 - Discontinued Highway
 - Railroad
- Federal Aid Route
 - Principal Arterial
 - Minor Arterial
 - Major Collector
 - Federal Aid Urban
 - Minor Collector-not Federal Aid eligible
 - VTrans District Office
 - Police Station
 - Fire Station
 - Hospital
 - Cemetery
 - Building
 - Localities
 - State Capital (Montpelier)
 - Bridge or Culvert
 - Water Body
 - Stream or Brook
- Public Land
 - Public Airport
 - State Boundary
 - County Boundary
 - Town Boundary
 - Village Boundary
 - Urban Compact Boundary
 - County Subtle
- B20 / C20 State Bridge or Culvert Identifier**
B20 / C20 Town Bridge or Culvert Identifier
- Vermont State Plane Coordinate System
 North American Datum of 1983
 SPCS Zone Identifier: 4400
 Geodetic Reference System 80
 5,000-meter grid, Easting - Northing

TOWN	TOWN	TOWN
Andover	North Springfield U.C.	Woodstock
Baltimore	Perkinsville Village	
Bridgewater	Plymouth	
Cavendish	Reading	
Chester	Rockingham	
Chester-Chester Depot U.C.	Springfield	
Grafton	Springfield U.C.	
Hartland	Weathersfield	
Londonderry	West Windsor	
Ludlow	Windham	
Ludlow Village	Windsor	
Mount Holly	Windsor U.C.	



VERMONT COUNTY - TOWN MAP SERIES
WINDSOR COUNTY SHEET 6 OF 6

Prepared by the
 Vermont Agency of Transportation
 Mapping Unit
 in cooperation with
 U.S. Department of Transportation
 Federal Highway Administration

January 2012

0 1 2
 Miles

Scale: 1:63360 (printed size 24 x 36 inches)

This map was funded in part through grants from the Federal Highway Administration, U.S. Department of Transportation. The representation of the authors expressed herein do not necessarily state or reflect those of the U.S. Department of Transportation.