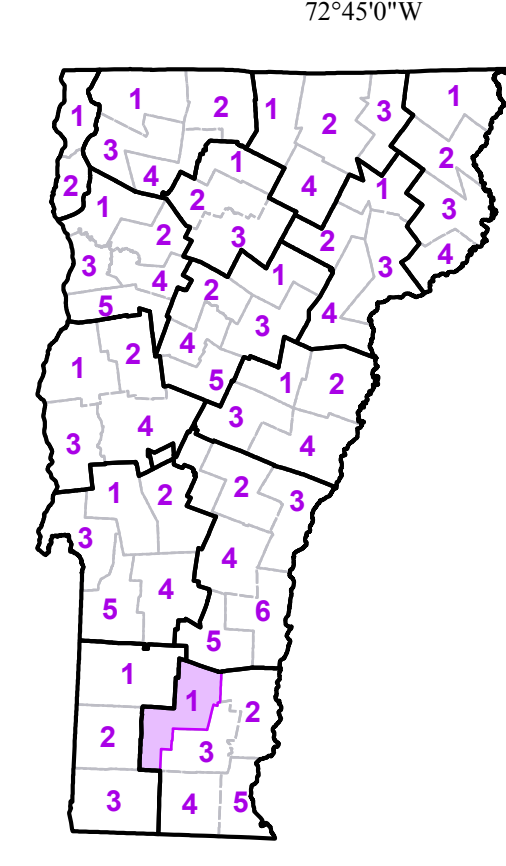


- Interstate
 - U.S. Route
 - Vermont Route
 - Minor Arterial or Collector
 - State Route Divided
 - State Route Paved
 - State Route Unpaved
 - Town Highway Paved
 - Town Highway Unpaved
 - Unimproved or Impassible
 - Town Legal Trail
 - Discontinued Highway
 - Railroad
- Federal Aid Route
 - Principal Arterial
 - Minor Arterial
 - Major Collector
 - Federal Aid Urban
 - Minor Collector-not Federal Aid eligible
 - VTrans District Office
 - Police Station
 - Fire Station
 - Hospital
 - Cemetery
 - Building
 - Localities
 - State Capital (Montpelier)
 - Bridge or Culvert
 - Water Body
 - Stream or Brook
- Public Land
 - Public Airport
 - State Boundary
 - County Boundary
 - Town Boundary
 - Village Boundary
 - Urban Compact Boundary
 - County Subtle

TOWN	TOWN	TOWN
Andover	Londonderry	Sunderland
Athens	Manchester	Townshend
Brattleboro	Manchester Center Depot U.C.	Townshend Village
Brookline	Manchester Center Village	Wardsboro
Chester	Marlboro	Weston
Dorset	Mount Tabor	Wilmington
Dover	Newfane	Windham
Dummerston	Newfane Village	Winhall
Glastenbury	Peru	Woodford
Grafton	Searsburg	
Jamaica	Somerset	
Landgrove	Stratton	



VERMONT COUNTY - TOWN MAP SERIES
WINDHAM COUNTY SHEET 1 OF 5

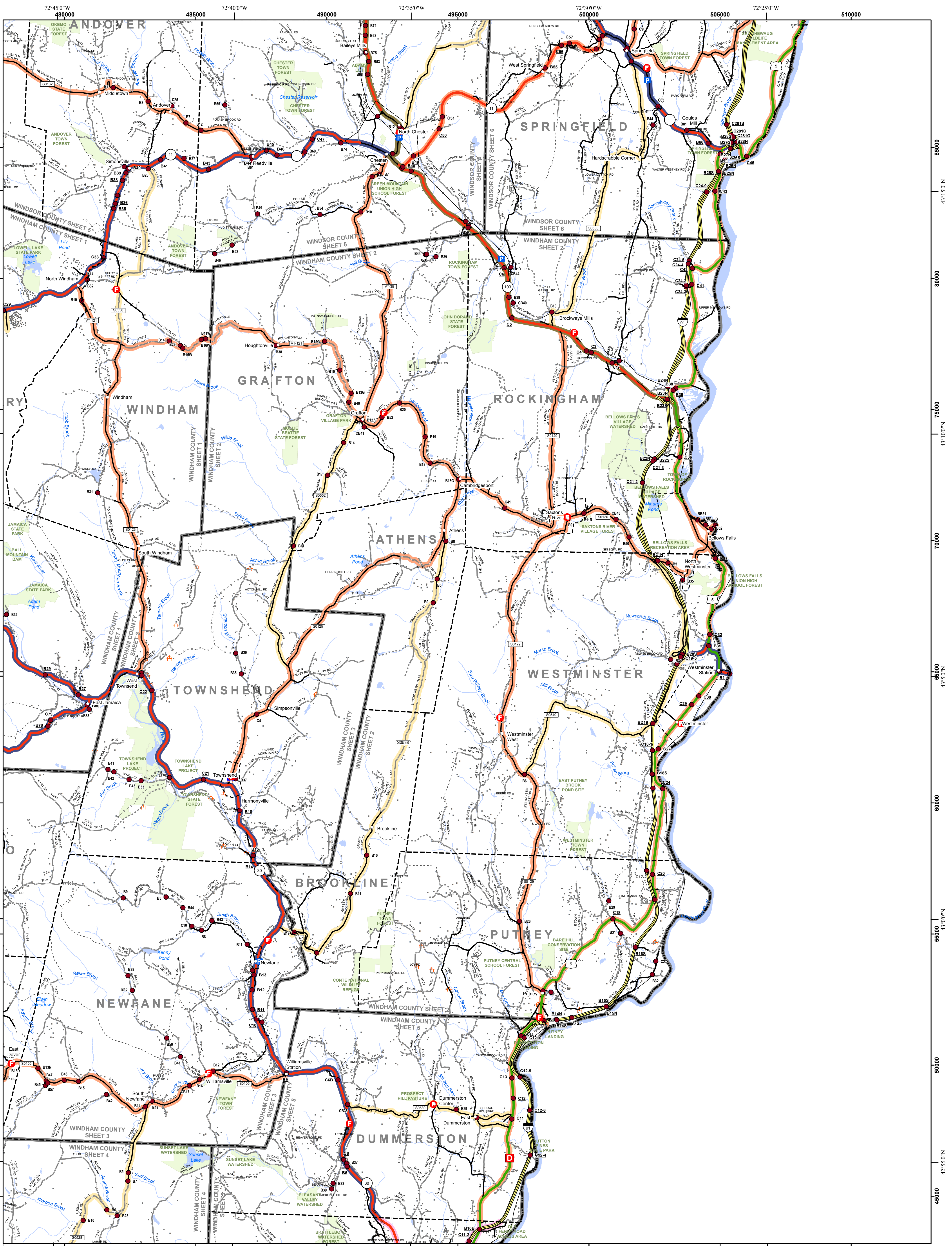
Prepared by the
Vermont Agency of Transportation
 Mapping Unit
 in cooperation with
U.S. Department of Transportation
 Federal Highway Administration

January 2012

Scale: 1:63360 (printed size 24 x 36 inches)

Contact Information: Vermont Agency of Transportation
 Division of Policy, Planning and Intermodal Development, Mapping Unit
 1 National Life Drive, Montpelier, VT 05633-5001, Telephone: 802-928-2600

This map was funded in part through grants from the Federal Highway Administration, U.S. Department of Transportation. The representation of the authors expressed herein do not necessarily state or reflect those of the U.S. Department of Transportation.



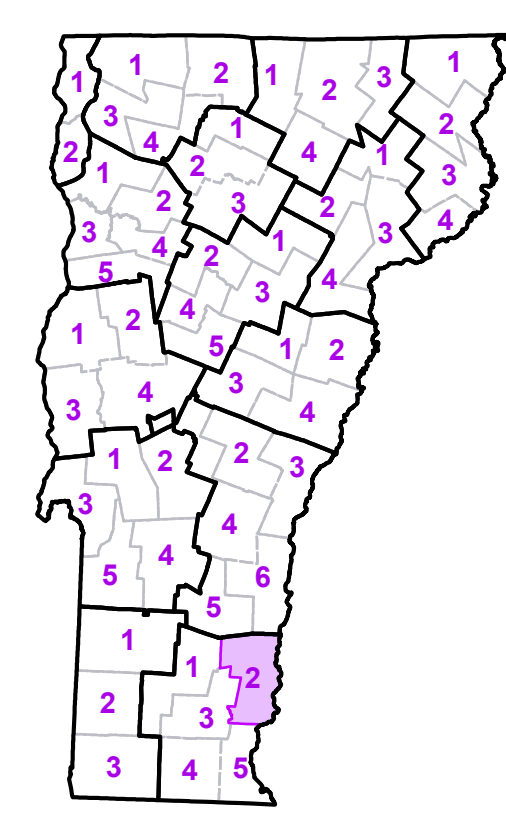
- Interstate
- U.S. Route
- Vermont Route
- Minor Arterial or Collector
- Interstate
- US Route Divided
- US Route
- State Route Paved
- State Route Unpaved
- Town Highway Paved
- Town Highway Unpaved
- Unimproved or Impassible
- Town Legal Trail
- Discontinued Highway
- Railroad

- Federal Aid Route
- Principal Arterial
- Minor Arterial
- Major Collector
- Federal Aid Urban
- Minor Collector-not Federal Aid eligible
- VTrans District Office
- Police Station
- Fire Station
- Hospital
- Cemetery
- Building
- Localities
- State Capital (Montpelier)
- Bridge or Culvert
- Water Body
- Stream or Brook

- Public Land
- Public Airport
- State Boundary
- County Boundary
- Town Boundary
- Village Boundary
- Urban Compact Boundary
- County Subline
- B20 / C20 State Bridge or Culvert Identifier
- B20 / C20 Town Bridge or Culvert Identifier

TOWN	TOWN	TOWN
Andover	Marlboro	Westminster
Athens	Newfane	Westminster Village
Bellows Falls Village	Newfane Village	Weston
Brattleboro	North Westminster Village	Windham
Brookline	Putney	
Chester	Rockingham	
Chester-Chester Depot U.C.	Saxtons River Village	
Dover	Springfield	
Dummerston	Springfield U.C.	
Grafton	Townshend	
Jamaica	Townshend Village	
Londonderry	Wardsboro	

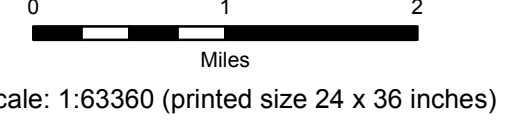
Vermont State Plane Coordinate System
 North American Datum of 1983
 SPCS Zone Identifier: 4400
 Geodetic Reference System 80
 5,000-meter grid, Easting - Northing



VERMONT COUNTY - TOWN MAP SERIES
WINDHAM COUNTY SHEET 2 OF 5

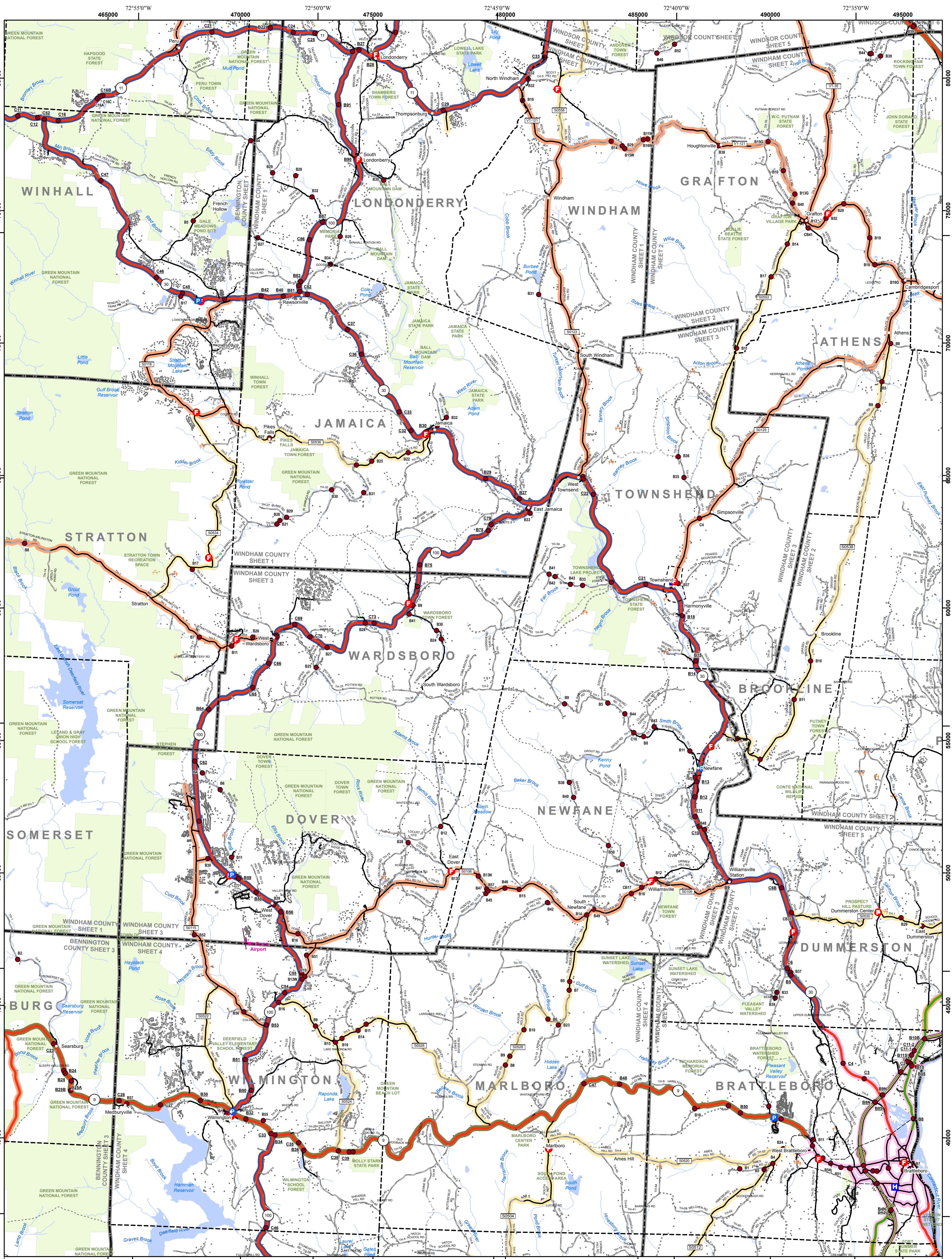
Prepared by the
Vermont Agency of Transportation Mapping Unit
 in cooperation with
U.S. Department of Transportation Federal Highway Administration

January 2012



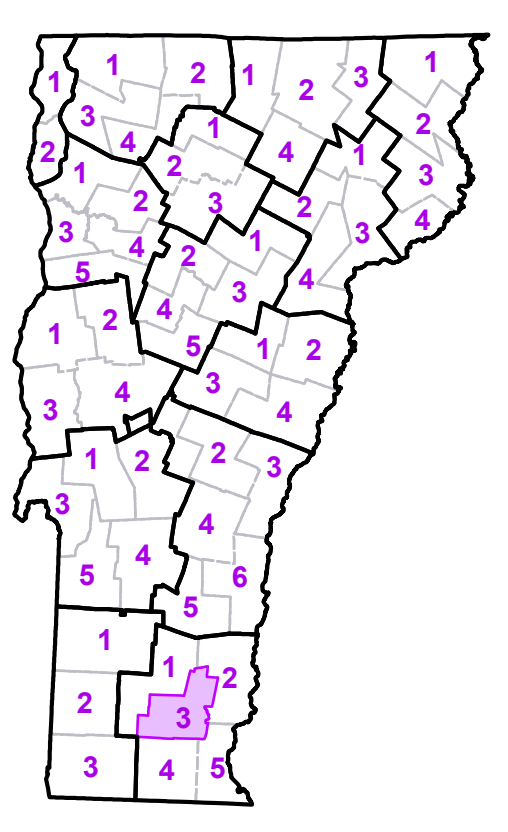
Contact Information: Vermont Agency of Transportation
 Division of Policy, Planning and Intermodal Development, Mapping Unit
 1 National Life Drive, Montpelier, VT 05633-5001, Telephone: 802-928-2600

This map was funded in part through grants from the Federal Highway Administration, U.S. Department of Transportation. The representation of the authors expressed herein do not necessarily state or reflect those of the U.S. Department of Transportation.



- Interstate
 - U.S. Route
 - Vermont Route
 - Minor Arterial or Collector
 - Interstate
 - US Route Divided
 - US Route
 - State Route Paved
 - State Route Unpaved
 - Town Highway Paved
 - Town Highway Unpaved
 - Unimproved or Impassible
 - Discontinued Highway
 - Railroad
- Federal Aid Route
 - Principal Arterial
 - Minor Arterial
 - Major Collector
 - Federal Aid Urban
 - Minor Collector-not Federal Aid eligible
 - VTrans District Office
 - Police Station
 - Fire Station
 - Hospital
 - Cemetery
 - Building
 - Localities
 - State Capital (Montpelier)
 - Bridge or Culvert
 - Water Body
 - Stream or Brook
- Public Land
 - Public Airport
 - State Boundary
 - County Boundary
 - Town Boundary
 - Village Boundary
 - Urban Compact Boundary
 - County Subtle
- Emergency Response Site**
- B20 / C20 State Bridge or Culvert Identifier
 - B20 / C20 Town Bridge or Culvert Identifier
- Vermont State Plane Coordinate System
 North American Datum of 1983
 SPCS Zone Identifier: 4400
 Geodetic Reference System 80
 5,000-meter grid, Easting - Northing

TOWN	TOWN	TOWN
Andover	Halifax	Somerset
Athens	Jamaica	Springfield
Brattleboro	Landgrove	Stratton
Brattleboro-W. Brattleboro U.C.	Londonderry	Townshend
Brattleboro-W. Brattleboro U.C.	Marlboro	Townshend Village
Brookline	Newfane	Vernon
Chester	Newfane Village	Wardsboro
Dorset	Peru	Westminster
Dover	Putney	Whitingham
Dummerston	Readsboro	Wilmington
Grafton	Rockingham	Windham
Guilford	Searsburg	Winhall



VERMONT COUNTY - TOWN MAP SERIES
WINDHAM COUNTY SHEET 3 OF 5

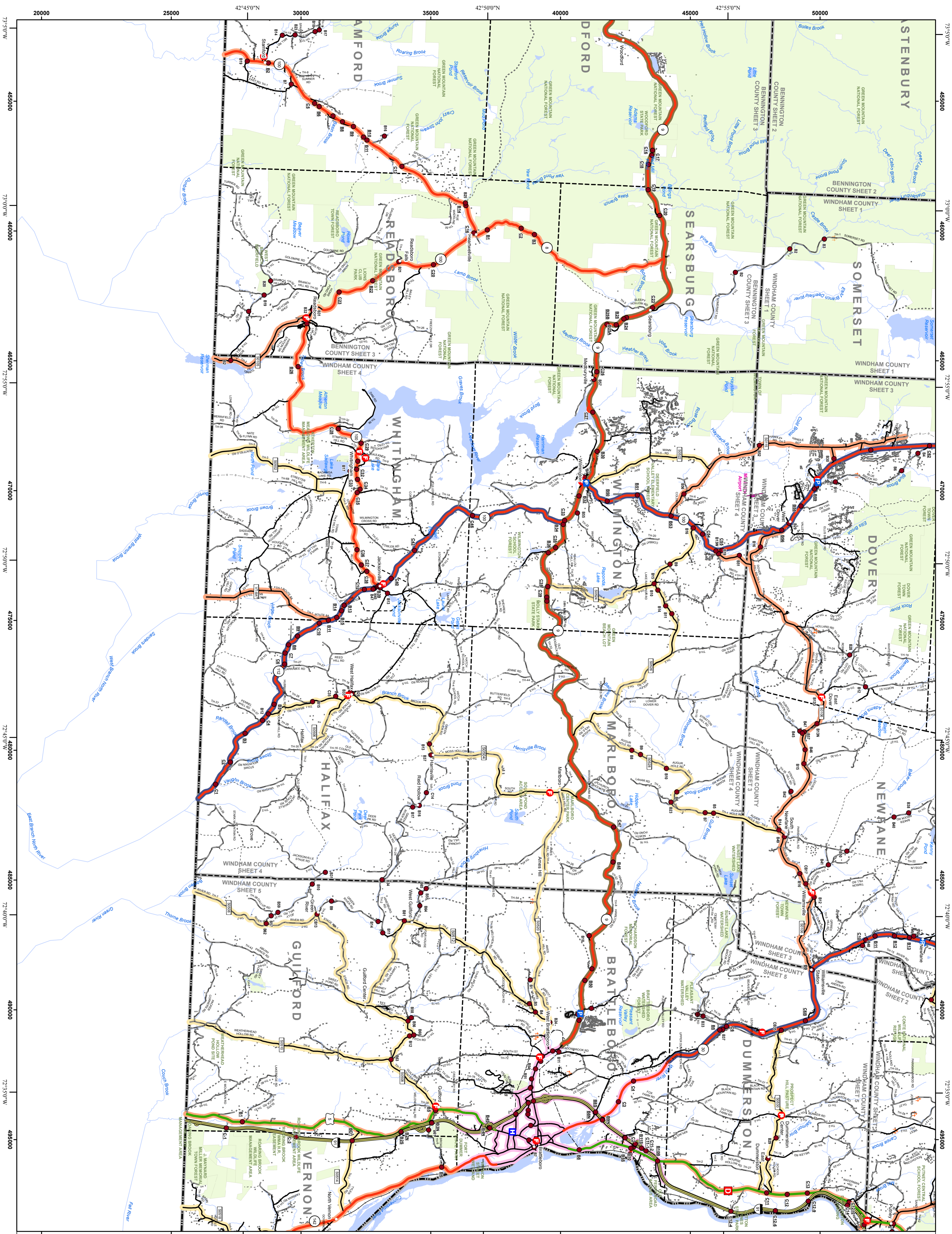
Prepared by the
 Vermont Agency of Transportation
 Mapping Unit
 in cooperation with
 U.S. Department of Transportation
 Federal Highway Administration

January 2012

Scale: 1:63360 (printed size 24 x 36 inches)

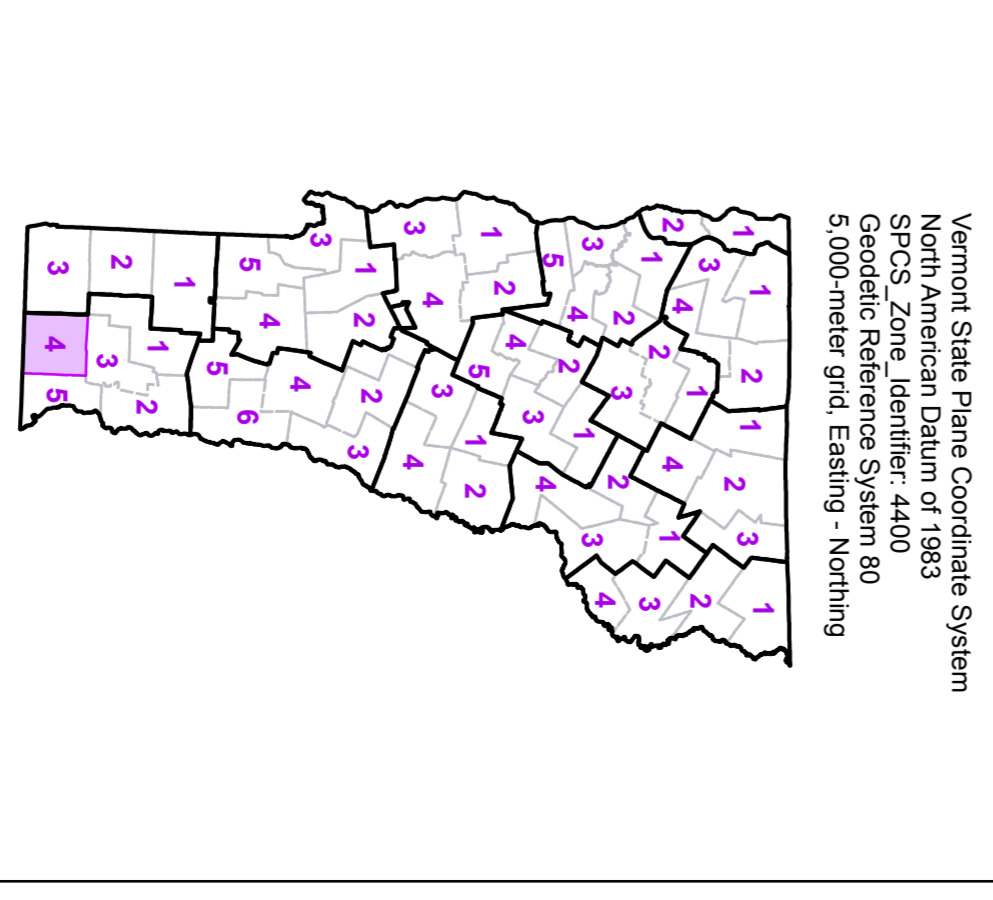
Contact Information: Vermont Agency of Transportation
 Division of Policy, Planning and Intermodal Development, Mapping Unit
 1 National Life Drive, Montpelier, VT 05633-5001, Telephone: 802-928-2600

This map was funded in part through grants from the Federal Highway Administration, U.S. Department of Transportation. The representation of the authors expressed herein do not necessarily state or reflect those of the U.S. Department of Transportation.



TOWN	Color
Brattleboro	Light Blue
Brattleboro-Windham U.C.	Light Green
Brattleboro-Windham U.C.	Light Yellow
Brookline	Light Purple
Dover	Light Orange
Dummerston	Light Red
Gaithersbury	Light Blue-Gray
Guilford	Light Green
Halifax	Light Yellow
Jacksonville Village	Light Purple
Marlboro	Light Orange
Nearside	Light Red
Nearside Village	Light Purple
Putney	Light Blue-Gray
Readsborough	Light Red
Searsburg	Light Orange
Somerset	Light Yellow
Stamford	Light Purple
Vernon	Light Orange
Windham	Light Red
Woodford	Light Blue-Gray

- Interstate
- U.S. Route
- Vermont Route
- Minor Arterial or Collector
- Interstate
- US Route Divided
- US Route
- State Route Paved
- State Route Unpaved
- Town Highway Paved
- Town Highway Unpaved
- Unimproved or Impassible
- Town Legal Trail
- Discontinued Highway
- Railroad
- Federal Aid Route
- Principal Arterial
- Minor Arterial
- Major Collector
- Federal Aid Urban
- *not Federal Aid eligible
- VTtrans District Office
- Emergency Response Site
- Police Station
- Fire Station
- Hospital
- Building
- Cemetery
- Locality
- State Capital (Montpelier)
- Bridge or Culvert
- Water Body
- Stream or Brook
- Public Land
- Airport
- State Boundary
- County Boundary
- Village Boundary
- Urban Compact Boundary
- County Subtle
- B20 / C20 State Bridge or Culvert Identifier
- B20 / C20 Town Bridge or Culvert Identifier



VERMONT COUNTY - TOWN MAP SERIES
WINDHAM COUNTY SHEET 4 OF 5

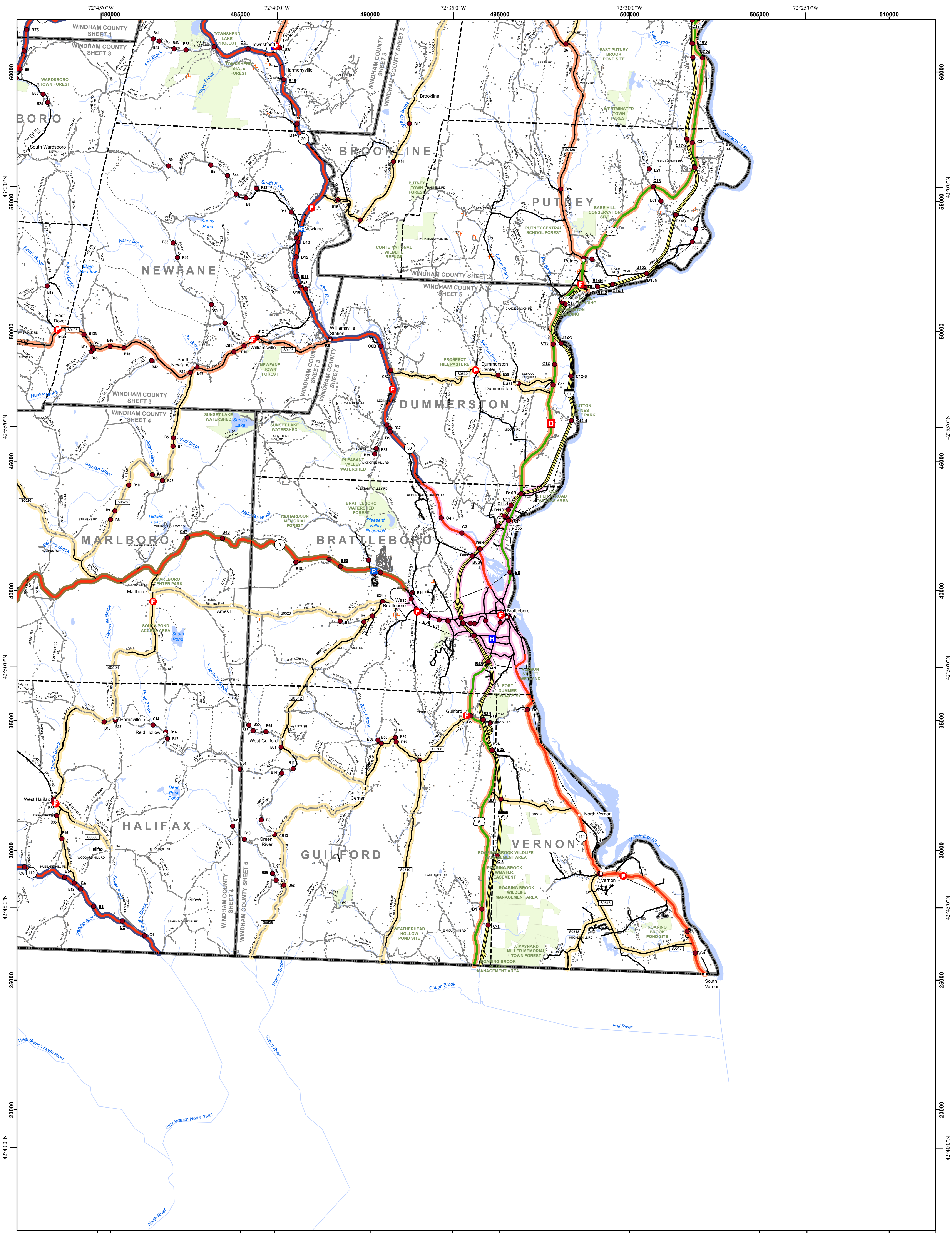
Prepared by the
 Vermont Agency of Transportation
 Mapping Unit
 In cooperation with
 U.S. Department of Transportation
 Federal Highway Administration
 January 2012

Scale 1:63,360 (printed size: 36 x 24 inches)

0 1 2 Miles

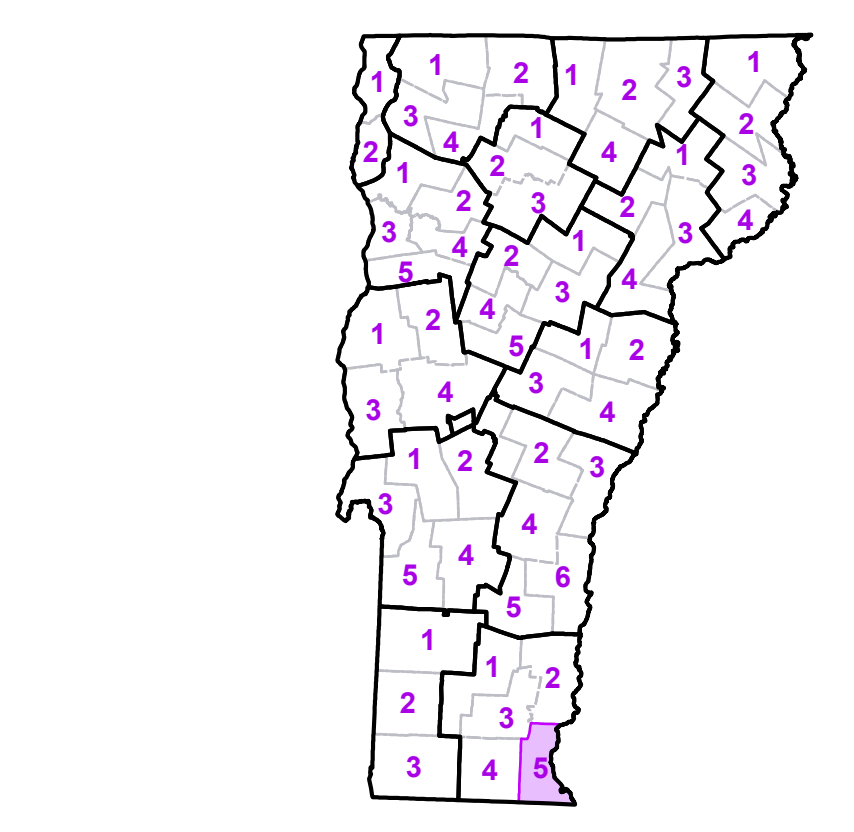
Contact information: Vermont Agency of Transportation
 Division of Policy, Planning and Intermodal Development, Mapping Unit
 1 National Life Drive, Montpelier, VT 05633-5001
 Telephone: 802-828-2800

This map was funded in part through grants from the Federal Highway Administration, U.S. Department of Transportation. The report title of the activity sponsored herein is: "Vermont Agency of Transportation, State of Vermont, U.S. Department of Transportation, U.S. Highway Administration, Federal Highway Administration, Mapping Unit, January 2012."



- Interstate
- U.S. Route
- Vermont Route
- Minor Arterial or Collector
- Interstate
- US Route Divided
- US Route
- State Route Paved
- State Route Unpaved
- Town Highway Paved
- Town Highway Unpaved
- Umimproved or Impassible
- Town Legal Trail
- Discontinued Highway
- Railroad
- Federal Aid Route
- Principal Arterial
- Minor Arterial
- Major Collector
- Federal Aid Urban
- Minor Collector-not Federal Aid eligible
- VTrans District Office
- Police Station
- Fire Station
- Hospital
- Cemetery
- Building
- Localities
- State Capital (Montpelier)
- Bridge or Culvert
- Water Body
- Stream or Brook
- Public Land
- Public Airport
- State Boundary
- County Boundary
- Town Boundary
- Village Boundary
- Urban Compact Boundary
- County Subtle

TOWN	TOWN
Brattleboro	Putney
Brattleboro-W. Brattleboro U.C.	Townshend
Brattleboro-W. Brattleboro U.C.	Townshend Village
Brookline	Vernon
Dummerston	Wardsboro
Guilford	Westminster
Halifax	
Jamaica	
Marlboro	
Newfane	
Newfane Village	



**VERMONT
COUNTY - TOWN MAP SERIES
WINDHAM COUNTY
SHEET 5 OF 5**

Prepared by the
**Vermont Agency of Transportation
Mapping Unit**
in cooperation with
**U.S. Department of Transportation
Federal Highway Administration**

January 2012

0 1 2
Miles

Scale: 1:63360 (printed size 24 x 36 inches)

Contact Information: Vermont Agency of Transportation
Division of Policy, Planning and Intermodal Development, Mapping Unit
1 National Life Drive, Montpelier, VT 05633-5001, Telephone: 802-928-2600

This map was funded in part through grants from the Federal Highway Administration, U.S. Department of Transportation. The representation of the authors expressed herein do not necessarily state or reflect those of the U. S. Department of Transportation.