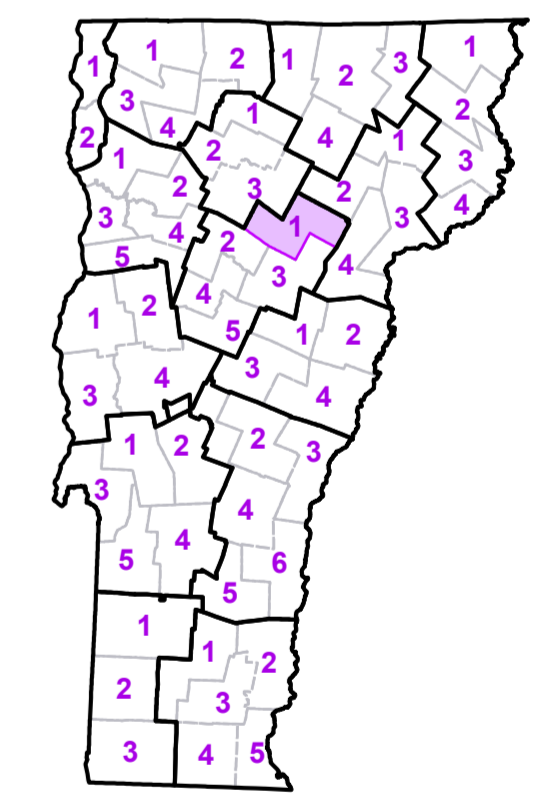


- Interstate
- U.S. Route
- Vermont Route
- Minor Arterial or Collector
- Interstate
- US Route Divided
- US Route
- State Route Paved
- State Route Unpaved
- Town Highway Paved
- Town Highway Unpaved
- Unimproved or Impassible
- Town Legal Trail
- Discontinued Highway
- Railroad
- Federal Aid Route
 - Principal Arterial
 - Minor Arterial
 - Major Collector
 - Federal Aid Urban
 - Minor Collector
 - *Not Federal Aid eligible
- VTrans District Office
- Emergency Response Site
 - Police Station
 - Fire Station
 - Hospital
 - Cemetery
 - Building
 - Localities
 - State Capital (Montpelier)
 - Bridge or Culvert
 - Water Body
 - Stream or Brook
 - Public Land
 - Public Airport
- State Boundary
- County Boundary
- Town Boundary
- Village Boundary
- Urban Compact Boundary
- County Subtle

TOWN
Barnet
Berlin
Cabot
Cabot Village
Calais
Danville
East Montpelier
Elmore
Greensboro
Groton
Hardwick
Hardwick U.C.
Marshfield
Marshfield Village
Middlesex
Montpelier City
Moretown
Morrisville
Peacham
Plainfield
Ryegate
Stannard
Stowe
Stowe Village
Walden
Waterbury
Waterbury Village
Wheelock
Woodbury
Worcester

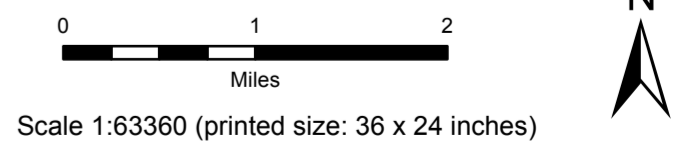
Vermont State Plane Coordinate System
 North American Datum of 1983
 SPCS_Zone_Identifier: 4400
 Geodetic Reference System 80
 5,000-meter grid, Easting - Northing



VERMONT
COUNTY - TOWN MAP SERIES
WASHINGTON COUNTY
SHEET 1 OF 5

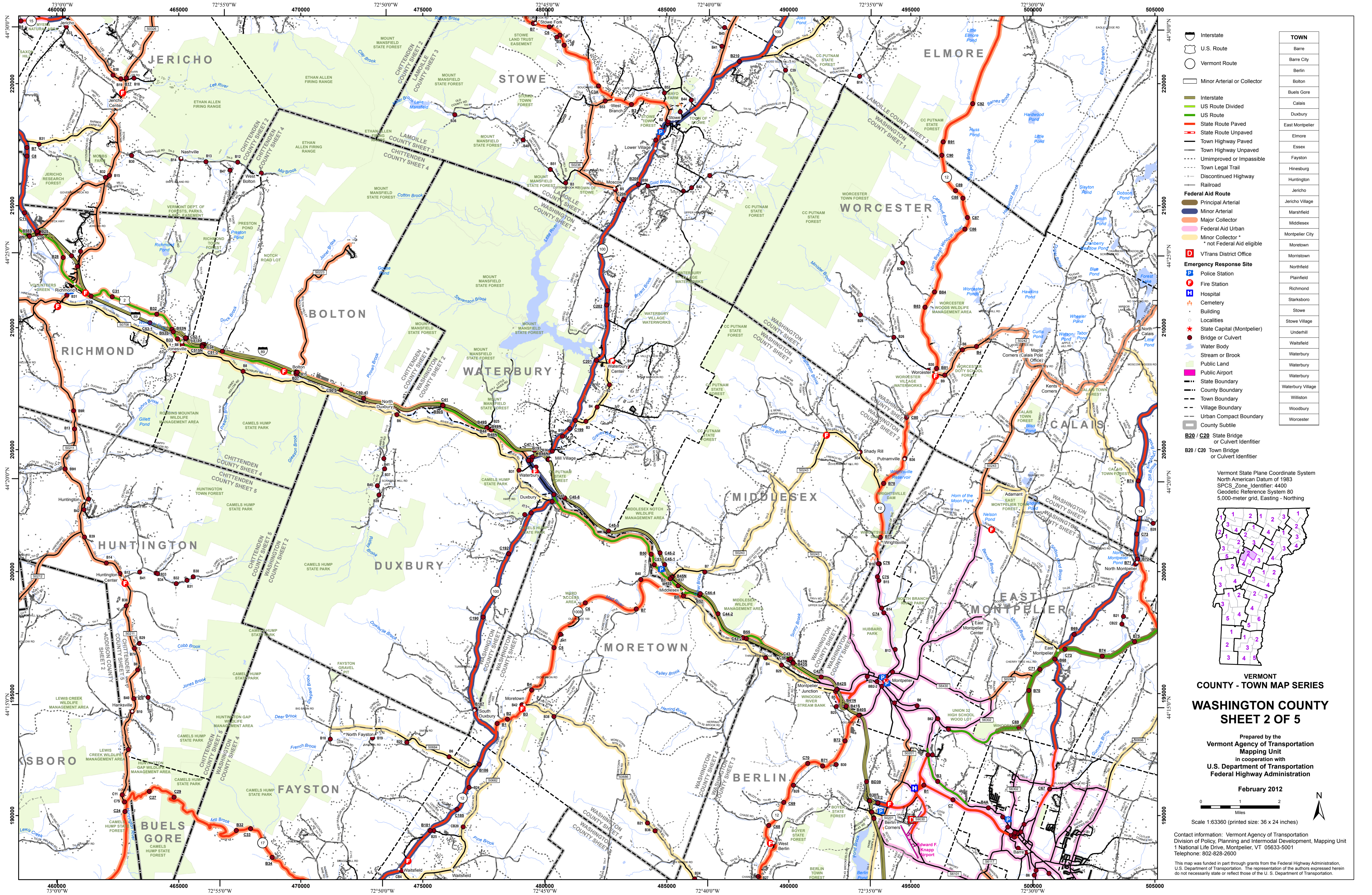
Prepared by the
Vermont Agency of Transportation
 Mapping Unit
 in cooperation with
U.S. Department of Transportation
 Federal Highway Administration

February 2012



Contact information: Vermont Agency of Transportation
 Division of Policy, Planning and Intermodal Development, Mapping Unit
 1 National Life Drive, Montpelier, VT 05633-5001
 Telephone: 802-828-2600

This map was funded in part through grants from the Federal Highway Administration, U.S. Department of Transportation. The representation of the authors expressed herein do not necessarily state or reflect those of the U.S. Department of Transportation.

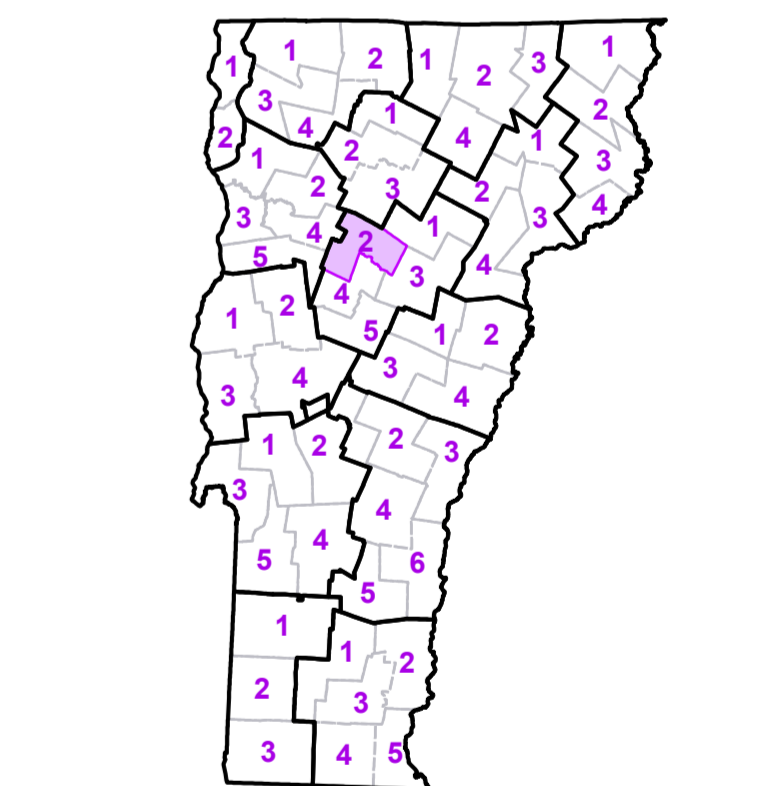


- Interstate
 - U.S. Route
 - Vermont Route
 - Minor Arterial or Collector
 - Interstate
 - US Route Divided
 - US Route
 - State Route Paved
 - State Route Unpaved
 - Town Highway Paved
 - Town Highway Unpaved
 - Unimproved or Impassible
 - Town Legal Trail
 - Discontinued Highway
 - Railroad
- Federal Aid Route**
- Principal Arterial
 - Minor Arterial
 - Major Collector
 - Federal Aid Urban
 - Minor Collector * not Federal Aid eligible
 - VTrans District Office
- Emergency Response Site**
- Police Station
 - Fire Station
 - Hospital
 - Cemetery
 - Building
 - Localities
 - State Capital (Montpelier)
 - Bridge or Culvert
 - Water Body
 - Stream or Brook
 - Public Land
 - Public Airport
- State Boundary
 - County Boundary
 - Town Boundary
 - Village Boundary
 - Urban Compact Boundary
 - County Subtile

TOWN	
Barre	
Barre City	
Berlin	
Bolton	
Buels Gore	
Calais	
Duxbury	
East Montpelier	
Elmore	
Essex	
Fayston	
Hinesburg	
Huntington	
Jericho	
Jericho Village	
Marshall	
Middlesex	
Montpelier City	
Moretown	
Northfield	
Northfield	
Plainfield	
Richmond	
Starksboro	
Stowe	
Stowe Village	
Underhill	
Waterbury	
Waterbury	
Waterbury Village	
Williston	
Woodbury	
Worcester	

B20 / C20 State Bridge or Culvert Identifier
B20 / C20 Town Bridge or Culvert Identifier

Vermont State Plane Coordinate System
 North American Datum of 1983
 SPCS_Zone_Identifier: 4400
 Geodetic Reference System 80
 5,000-meter grid, Easting - Northing



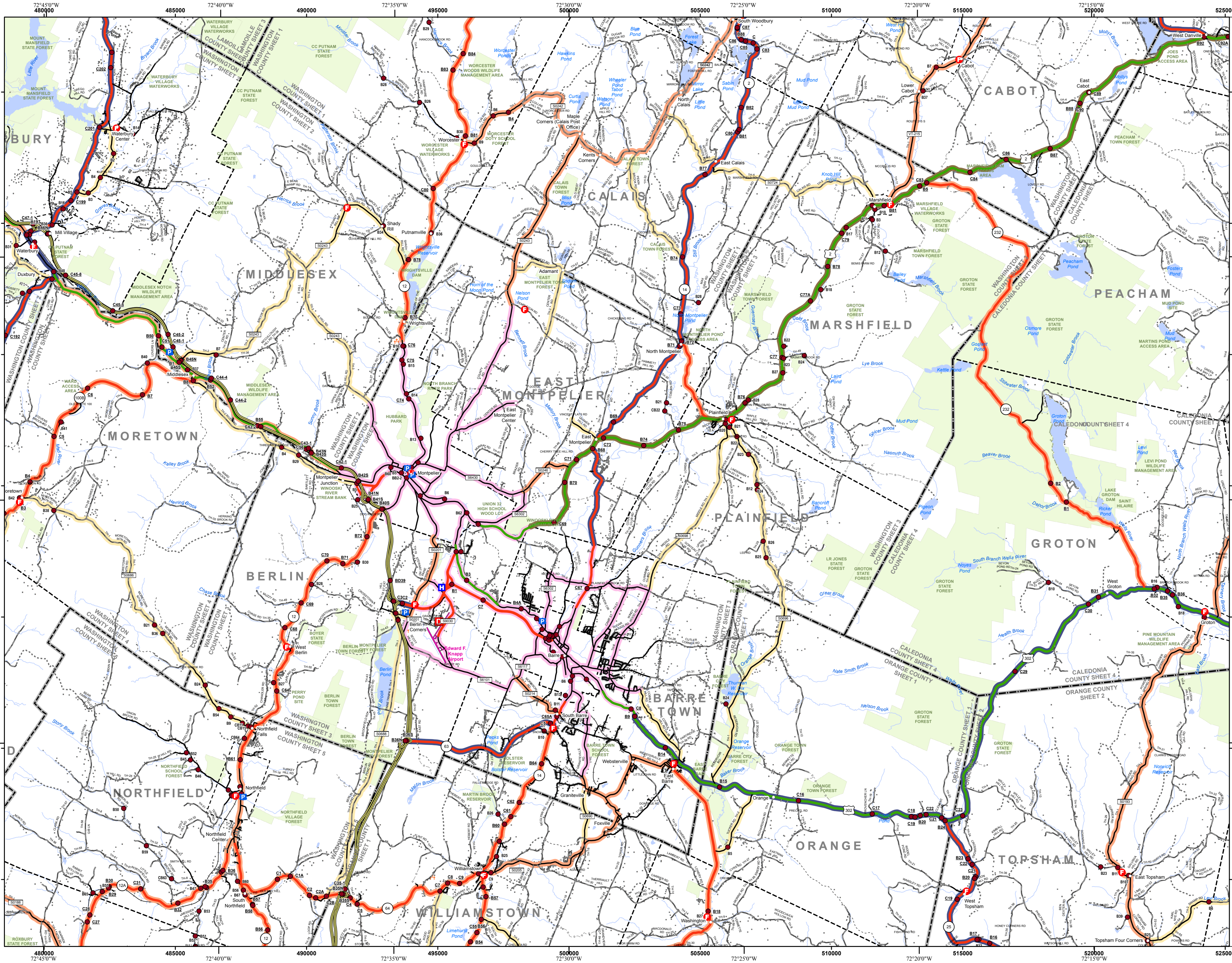
**VERMONT
 COUNTY - TOWN MAP SERIES
 WASHINGTON COUNTY
 SHEET 2 OF 5**

Prepared by the
**Vermont Agency of Transportation
 Mapping Unit**
 in cooperation with
**U.S. Department of Transportation
 Federal Highway Administration**

February 2012
 0 1 2
 Miles
 Scale 1:63360 (printed size: 36 x 24 inches)

Contact information: Vermont Agency of Transportation
 Division of Policy, Planning and Intermodal Development, Mapping Unit
 1 National Life Drive, Montpelier, VT 05633-5001
 Telephone: 802-828-2600

This map was funded in part through grants from the Federal Highway Administration, U.S. Department of Transportation. The representation of the authors expressed herein do not necessarily state or reflect those of the U.S. Department of Transportation.



TOWN	
Barnet	
Barre	
Barre City	
Berlin	
Cabot	
Cabot Village	
Calais	
Danville	
Duxbury	
East Montpelier	
Groton	
Groton Village	
Marshfield	
Marshfield Village	
Middlesex	
Montpelier City	
Moretown	
Newbury	
Northfield	
Northfield Village	
Orange	
Peacham	
Plainfield	
Roxbury	
Ryegate	
Stowe	
Topsham	
Waitsfield	
Washington	
Waterbury	
Waterbury Village	
Williamstown	
Woodbury	
Worcester	

Interstate
 U.S. Route
 Vermont Route
 Minor Arterial or Collector
 Interstate
 US Route Divided
 US Route
 State Route Paved
 State Route Unpaved
 Town Highway Paved
 Town Highway Unpaved
 Unimproved or Impassible
 Town Legal Trail
 Discontinued Highway
 Railroad
Federal Aid Route
 Principal Arterial
 Minor Arterial
 Major Collector
 Federal Aid Urban
 Minor Collector *
 * not Federal Aid eligible
VTrans District Office
Emergency Response Site
 Police Station
 Fire Station
 Hospital
 Cemetery
 Building
 Localities
 State Capital (Montpelier)
 Bridge or Culvert
 Water Body
 Stream or Brook
 Public Land
 Public Airport
 State Boundary
 County Boundary
 Town Boundary
 Village Boundary
 Urban Compact Boundary
 County Subtile
B20 / C20 State Bridge or Culvert Identifier
B20 / C20 Town Bridge or Culvert Identifier

Vermont State Plane Coordinate System
 North American Datum of 1983
 SPCS_Zone_Identifier: 4400
 Geodetic Reference System 80
 5,000-meter grid, Easting-Northing

VERMONT
COUNTY - TOWN MAP SERIES
WASHINGTON COUNTY
SHEET 3 OF 5

Prepared by the
Vermont Agency of Transportation
 Mapping Unit
 in cooperation with
U.S. Department of Transportation
 Federal Highway Administration

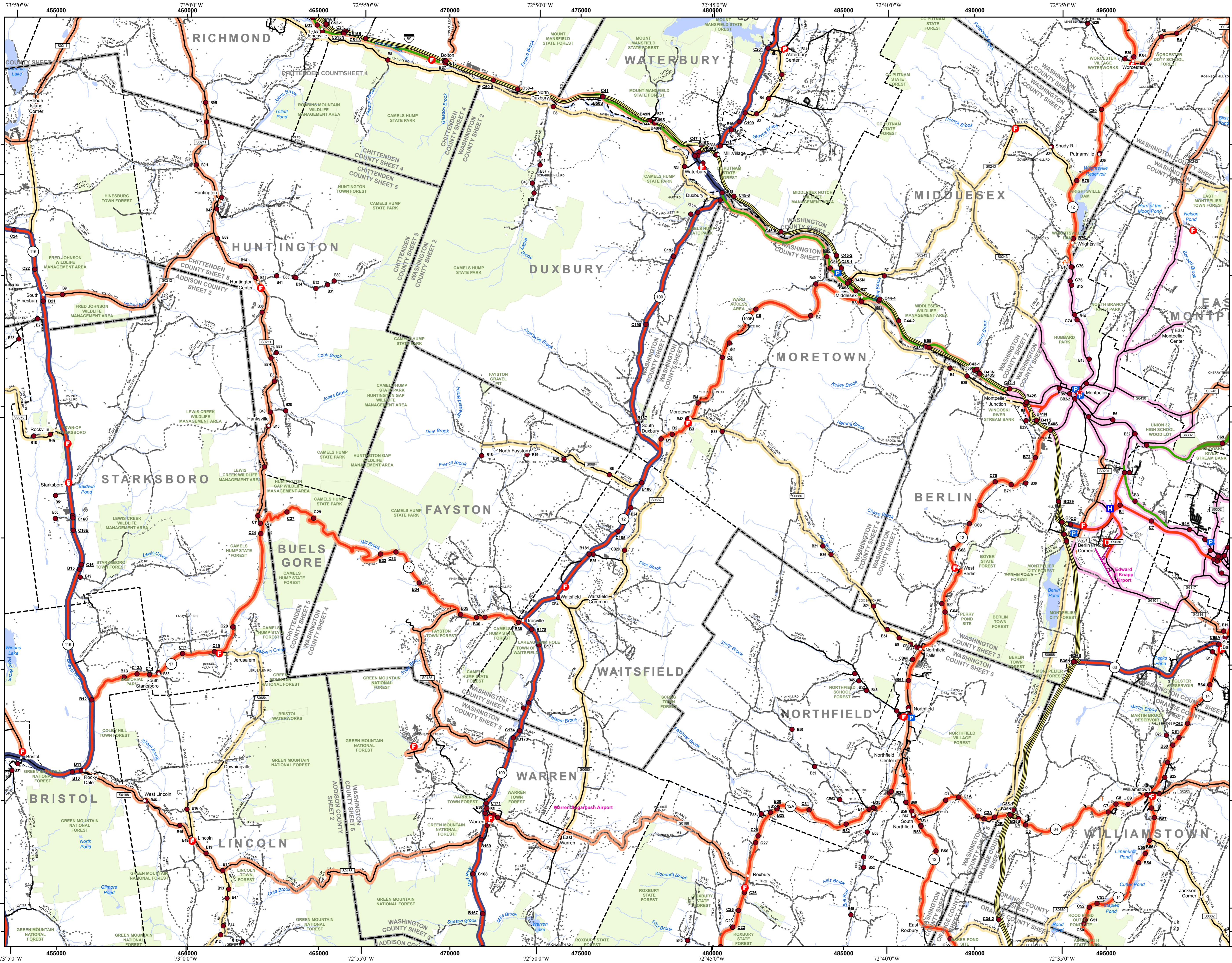
February 2012

0 1 2
 Miles

Scale 1:63360 (printed size: 36 x 24 inches)

Contact information: Vermont Agency of Transportation
 Division of Policy, Planning and Intermodal Development, Mapping Unit
 1 National Life Drive, Montpelier, VT 05633-5001
 Telephone: 802-828-2600

This map was funded in part through grants from the Federal Highway Administration, U.S. Department of Transportation. The representation of the authors expressed herein do not necessarily state or reflect those of the U.S. Department of Transportation.



Legend

- Interstate
- U.S. Route
- Vermont Route
- Minor Arterial or Collector
- Interstate
- US Route Divided
- US Route
- State Route Paved
- State Route Unpaved
- Town Highway Paved
- Town Highway Unpaved
- Unimproved or Impassible
- Town Legal Trail
- Discontinued Highway
- Railroad

Federal Aid Route

- Principal Arterial
- Minor Arterial
- Major Collector
- Federal Aid Urban
- Minor Collector *not Federal Aid eligible

Emergency Response Site

- VTrans District Office
- Police Station
- Fire Station
- Hospital
- Cemetery
- Building
- Localities
- State Capital (Montpelier)
- Bridge or Culvert
- Water Body
- Stream or Brook
- Public Land
- Public Airport

Boundaries

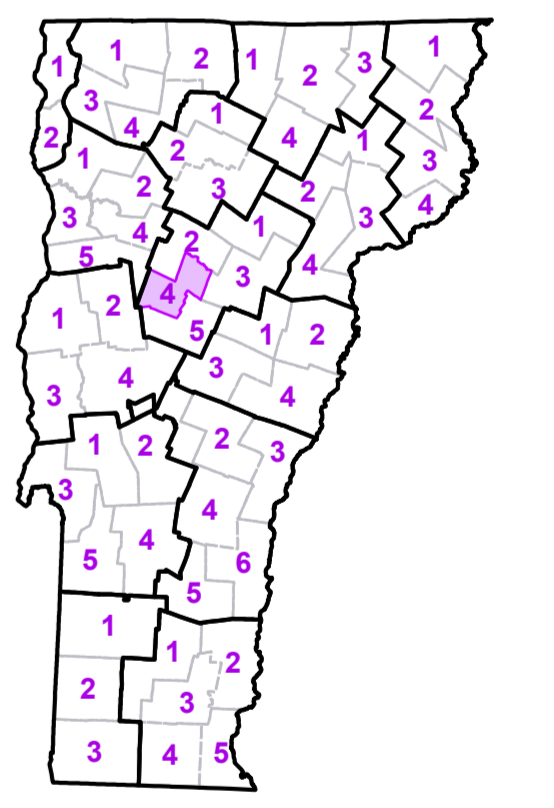
- State Boundary
- County Boundary
- Town Boundary
- Village Boundary
- Urban Compact Boundary
- County Subtile

Identifiers

- B20 / C20 State Bridge or Culvert Identifier
- B20 / C20 Town Bridge or Culvert Identifier

TOWN	
Barre	
Barre City	
Berlin	
Bolton	
Bristol	
Bristol Village	
Brookfield	
Buels Gore	
Calais	
Duxbury	
East Montpelier	
Fayston	
Granville	
Hinesburg	
Huntington	
Lincoln	
Middlesex	
Monkton	
Montpelier City	
Moretown	
Northfield	
Northfield Village	
Richmond	
Roxbury	
St. George	
Starksboro	
Waitsfield	
Warren	
Waterbury	
Waterbury Village	
Williamstown	
Williston	
Worcester	

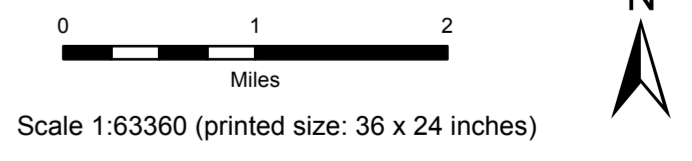
Vermont State Plane Coordinate System
 North American Datum of 1983
 SPCS_Zone_Identifier: 4400
 Geodetic Reference System 80
 5,000-meter grid, Easting - Northing



**VERMONT
 COUNTY - TOWN MAP SERIES
 WASHINGTON COUNTY
 SHEET 4 OF 5**

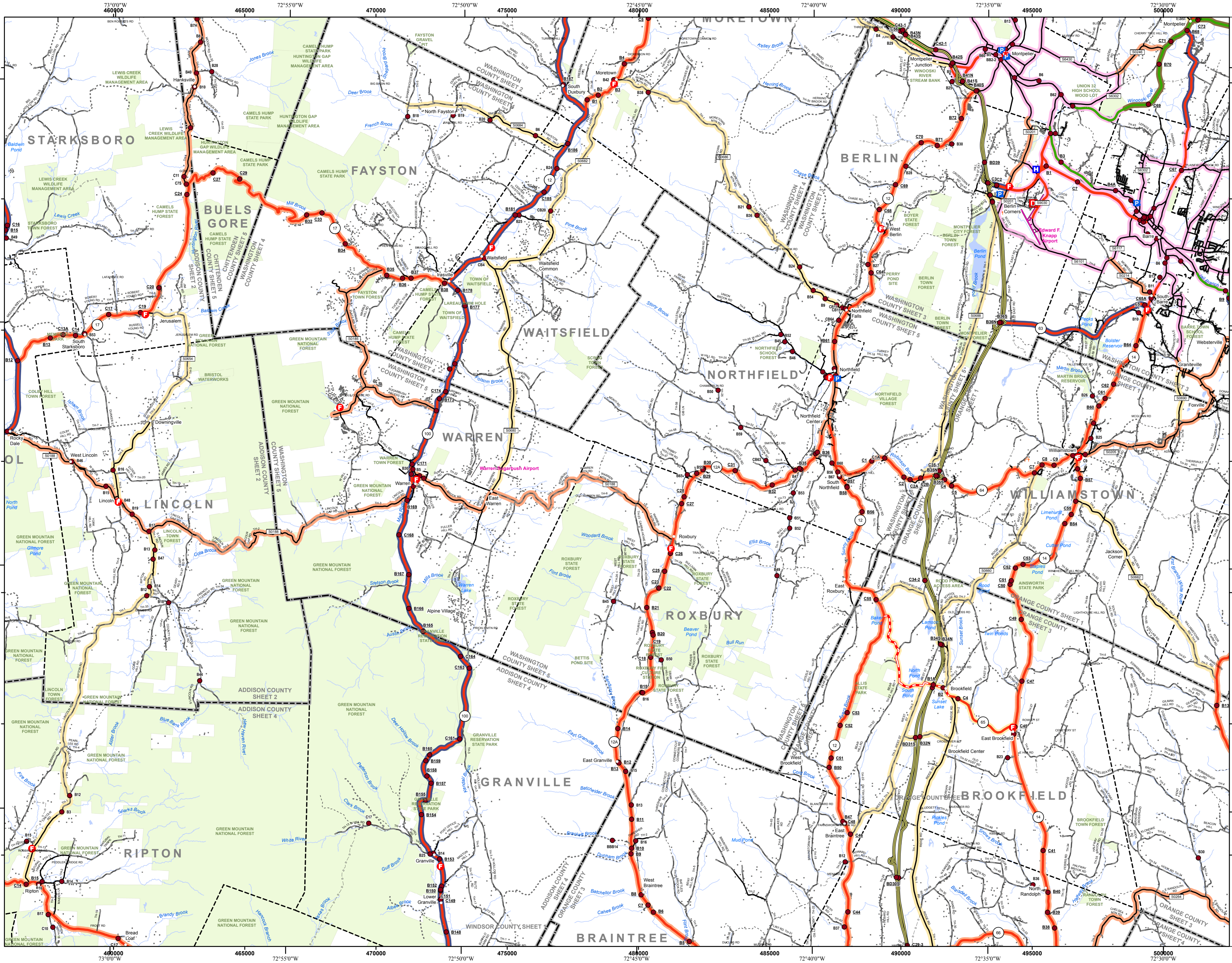
Prepared by the
**Vermont Agency of Transportation
 Mapping Unit**
 in cooperation with
**U.S. Department of Transportation
 Federal Highway Administration**

February 2012



Contact information: Vermont Agency of Transportation
 Division of Policy, Planning and Intermodal Development, Mapping Unit
 1 National Life Drive, Montpelier, VT 05633-5001
 Telephone: 802-828-2600

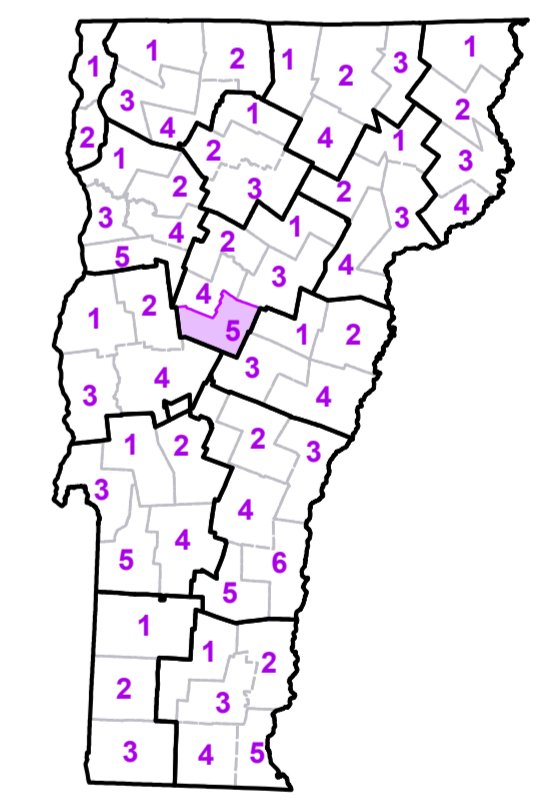
This map was funded in part through grants from the Federal Highway Administration, U.S. Department of Transportation. The representation of the authors expressed herein do not necessarily state or reflect those of the U.S. Department of Transportation.



- Interstate
- U.S. Route
- Vermont Route
- Minor Arterial or Collector
- Interstate
- US Route Divided
- US Route
- State Route Paved
- State Route Unpaved
- Town Highway Paved
- Town Highway Unpaved
- Unimproved or Impassible
- Town Legal Trail
- Discontinued Highway
- Railroad
- Federal Aid Route**
 - Principal Arterial
 - Minor Arterial
 - Major Collector
 - Federal Aid Urban
 - Minor Collector * not Federal Aid eligible
- Emergency Response Site**
 - Police Station
 - Fire Station
 - Hospital
 - Cemetery
 - Building
 - Localities
 - State Capital (Montpelier)
 - Bridge or Culvert
 - Water Body
 - Stream or Brook
 - Public Land
 - Public Airport
- State Boundary
- County Boundary
- Town Boundary
- Village Boundary
- Urban Compact Boundary
- County Subtle

TOWN
Barre
Barre City
Berlin
Braintree
Bristol
Brookfield
Buells Gore
Chelsea
Duxbury
East Montpelier
Fayston
Granville
Hancock
Huntington
Lincoln
Middlesex
Montpelier City
Moretown
Northfield
Northfield Village
Plainfield
Randolph
Ripton
Rochester
Roxbury
Salisbury
Starksboro
Tunbridge
Waitsfield
Warren
Washington
Williamstown

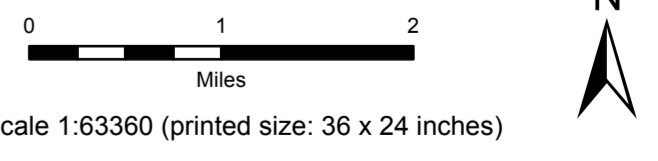
Vermont State Plane Coordinate System
 North American Datum of 1983
 SPCS_Zone_Identifier: 4400
 Geodetic Reference System 80
 5,000-meter grid, Easting - Northing



**VERMONT
 COUNTY - TOWN MAP SERIES
 WASHINGTON COUNTY
 SHEET 5 OF 5**

Prepared by the
**Vermont Agency of Transportation
 Mapping Unit**
 in cooperation with
**U.S. Department of Transportation
 Federal Highway Administration**

February 2012



Scale 1:63360 (printed size: 36 x 24 inches)
 Contact information: Vermont Agency of Transportation
 Division of Policy, Planning and Intermodal Development, Mapping Unit
 1 National Life Drive, Montpelier, VT 05633-5001
 Telephone: 802-828-2600

This map was funded in part through grants from the Federal Highway Administration, U.S. Department of Transportation. The representation of the authors expressed herein do not necessarily state or reflect those of the U.S. Department of Transportation.