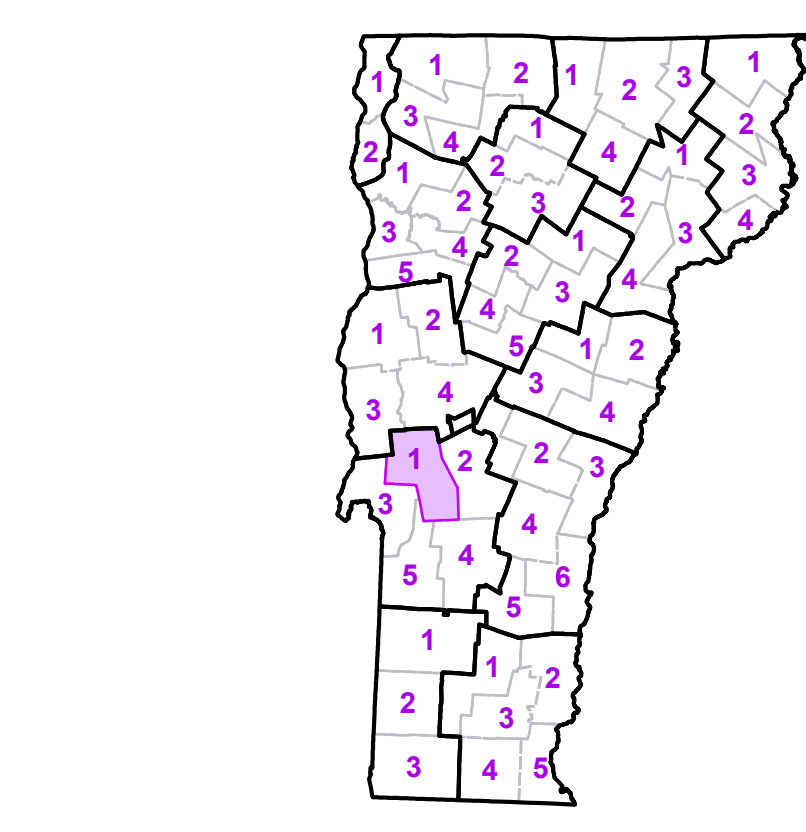


- Interstate
 - U.S. Route
 - Vermont Route
 - Minor Arterial or Collector
 - State Route Divided
 - State Route Paved
 - State Route Unpaved
 - Town Highway Paved
 - Town Highway Unpaved
 - Unimproved or Impassible
 - Town Legal Trail
 - Discontinued Highway
 - Railroad
- Federal Aid Route
 - Principal Arterial
 - Minor Arterial
 - Major Collector
 - Federal Aid Urban
 - Minor Collector-not Federal Aid eligible
 - VTrans District Office
 - Police Station
 - Fire Station
 - Hospital
 - Cemetery
 - Building
 - Localities
 - State Capital (Montpelier)
 - Bridge or Culvert
 - Water Body
 - Stream or Brook
- Public Land
 - Public Airport
 - State Boundary
 - County Boundary
 - Town Boundary
 - Village Boundary
 - Compact Boundary
 - County Subtle

TOWN	TOWN	TOWN
Benson	Ira	Rochester
Brandon	Killington	Rutland
Brandon U.C.	Leicester	Rutland City
Castleton	Mendon	Salisbury
Chittenden	Middletown Springs	Shoreham
Clarendon	Orwell	Shrewsbury
Cornwall	Pittsfield	Sudbury
Fair Haven	Pittsford	West Haven
Fair Haven U.C.	Poultney	West Rutland
Goshen	Poultney Village	West Rutland U.C.
Hancock	Proctor	Whiting
Hubbardton	Proctor U.C.	



VERMONT
COUNTY - TOWN MAP SERIES

RUTLAND COUNTY
SHEET 1 OF 5

Prepared by the
Vermont Agency of Transportation
Mapping Unit
in cooperation with
U.S. Department of Transportation
Federal Highway Administration

January 2012

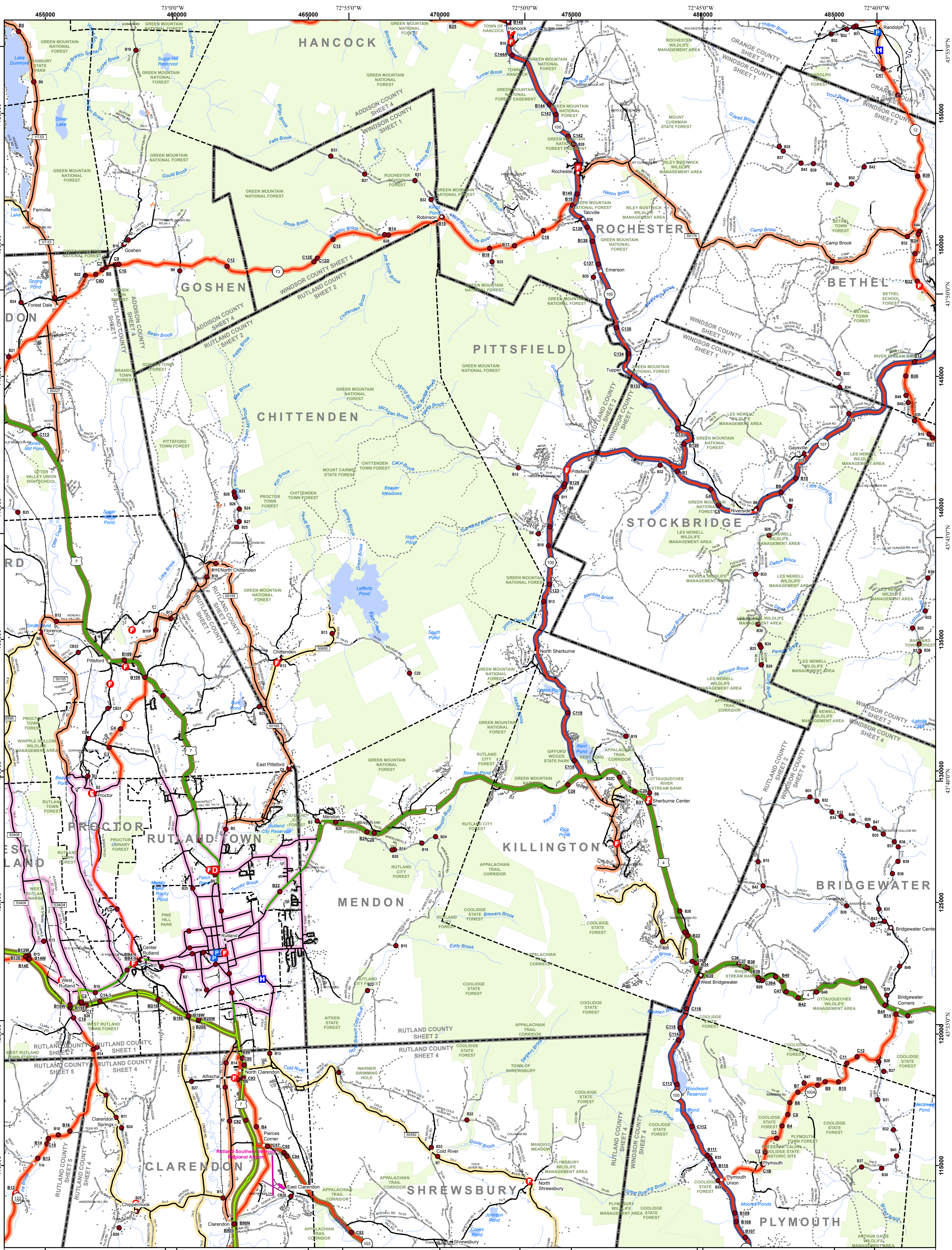
0 1 2
Miles

Scale: 1:63360 (printed size 24 x 36 inches)

N

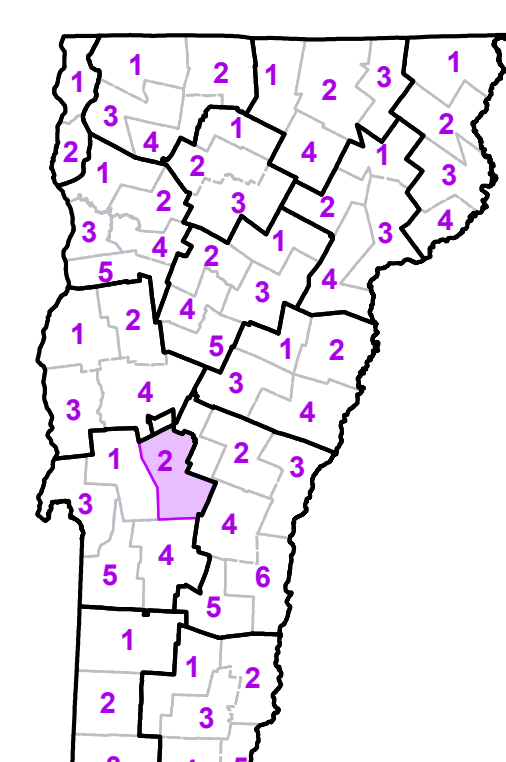
Contact Information: Vermont Agency of Transportation
Division of Policy, Planning and Intermodal Development, Mapping Unit
1 National Life Drive, Montpelier, VT 05633-5001, Telephone: 802-928-2600

This map was funded in part through grants from the Federal Highway Administration, U.S. Department of Transportation. The representation of the authors expressed herein do not necessarily state or reflect those of the U. S. Department of Transportation.



- Interstate
 - U.S. Route
 - Vermont Route
 - Minor Arterial or Collector
 - Interstate
 - US Route Divided
 - US Route
 - State Route Paved
 - State Route Unpaved
 - Town Highway Paved
 - Town Highway Unpaved
 - Unimproved or Impassible
 - Town Legal Trail
 - Discontinued Highway
 - Railroad
- Federal Aid Route
 - Principal Arterial
 - Minor Arterial
 - Major Collector
 - Federal Aid Urban
 - Minor Collector-not Federal Aid eligible
 - VTrans District Office
 - Police Station
 - Fire Station
 - Hospital
 - Cemetery
 - Building
 - Localities
 - State Capital (Montpelier)
 - Bridge or Culvert
 - Water Body
 - Stream or Brook
- Public Land
 - Public Airport
 - State Boundary
 - County Boundary
 - Town Boundary
 - Village Boundary
 - Urban Compact Boundary
 - County Subtle
- B20 / C20 State Bridge or Culvert Identifier
 - B20 / C20 Town Bridge or Culvert Identifier
- Vermont State Plane Coordinate System
 North American Datum of 1983
 SPCS Zone Identifier: 4400
 Geodetic Reference System 80
 5,000-meter grid, Easting - Northing

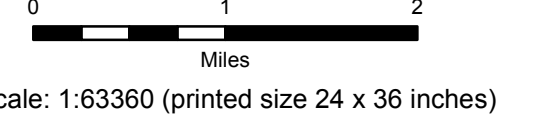
TOWN	TOWN	TOWN
Barnard	Leicester	Royalton
Bethel	Mendon	Rutland
Braintree	Pittsfield	Rutland City
Brandon	Pittsford	Salisbury
Brandon U.C.	Plymouth	Shrewsbury
Bridgewater	Proctor	Stockbridge
Chittenden	Proctor U.C.	West Rutland
Clarendon	Randolph	West Rutland U.C.
Goshen	Randolph U.C.	Woodstock
Hancock	Reading	
Ira	Ripton	
Killington	Rochester	



VERMONT COUNTY - TOWN MAP SERIES
RUTLAND COUNTY
SHEET 2 OF 5

Prepared by the
Vermont Agency of Transportation
 Mapping Unit
 in cooperation with
U.S. Department of Transportation
 Federal Highway Administration

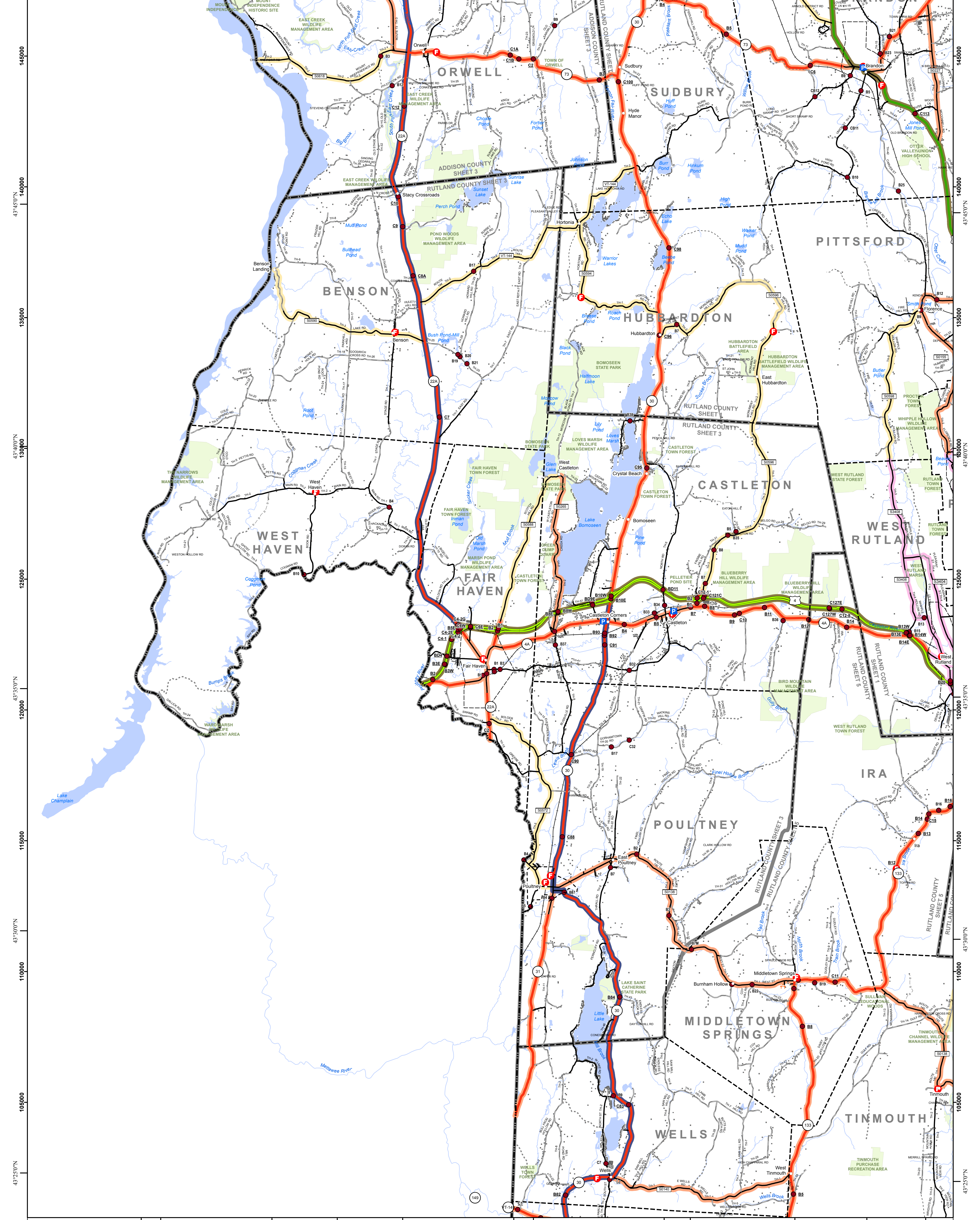
January 2012



Contact Information: Vermont Agency of Transportation
 Division of Policy, Planning and Intermodal Development, Mapping Unit
 1 National Life Drive, Montpelier, VT 05633-5001, Telephone: 802-928-2600

This map was funded in part through grants from the Federal Highway Administration, U.S. Department of Transportation. The representation of the authors expressed herein do not necessarily state or reflect those of the U. S. Department of Transportation.

425000 73°25'0"W 430000 73°20'0"W 435000 73°15'0"W 440000 73°10'0"W 445000 73°5'0"W 450000 73°0'0"W 455000

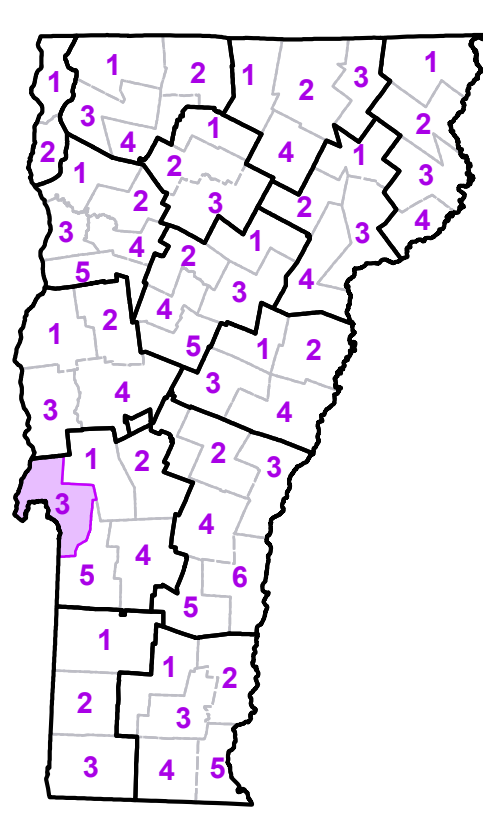


425000 73°25'0"W 430000 73°20'0"W 435000 73°15'0"W 440000 73°10'0"W 445000 73°5'0"W 450000 73°0'0"W 455000

- Interstate
 - U.S. Route
 - Vermont Route
 - Minor Arterial or Collector
 - Interstate
 - US Route Divided
 - US Route
 - State Route Paved
 - State Route Unpaved
 - Town Highway Paved
 - Town Highway Unpaved
 - Umimproved or Impassible
 - Town Legal Trail
 - Discontinued Highway
 - Railroad
- Federal Aid Route
 - Principal Arterial
 - Minor Arterial
 - Major Collector
 - Federal Aid Urban
 - Minor Collector-not Federal Aid eligible
 - VTrans District Office
 - Police Station
 - Fire Station
 - Hospital
 - Cemetery
 - Building
 - Localities
 - State Capital (Montpelier)
 - Bridge or Culvert
 - Water Body
 - Stream or Brook
- Public Land
 - State Airport
 - State Boundary
 - County Boundary
 - Town Boundary
 - Village Boundary
 - Urban Compact Boundary
 - County Subtle
- B20 / C20 State Bridge or Culvert Identifier
 - B20 / C20 Town Bridge or Culvert Identifier

Vermont State Plane Coordinate System
North American Datum of 1983
SPCS Zone Identifier: 4400
Geodetic Reference System 80
5,000-meter grid, Easting - Northing

TOWN	TOWN
Benson	Pittsford
Brandon	Poultney
Brandon U.C.	Poultney Village
Castleton	Proctor
Clarendon	Proctor U.C.
Fair Haven	Sudbury
Fair Haven U.C.	Tinmouth
Hubbardton	Wells Town
Ira	West Haven
Middletown Springs	West Rutland
Orwell	West Rutland U.C.
Pawlet	

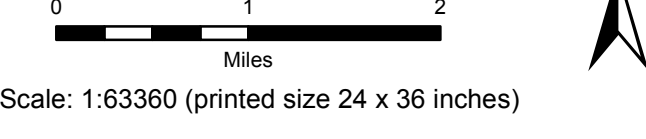


VERMONT COUNTY - TOWN MAP SERIES

RUTLAND COUNTY SHEET 3 OF 5

Prepared by the
Vermont Agency of Transportation
Mapping Unit
in cooperation with
U.S. Department of Transportation
Federal Highway Administration

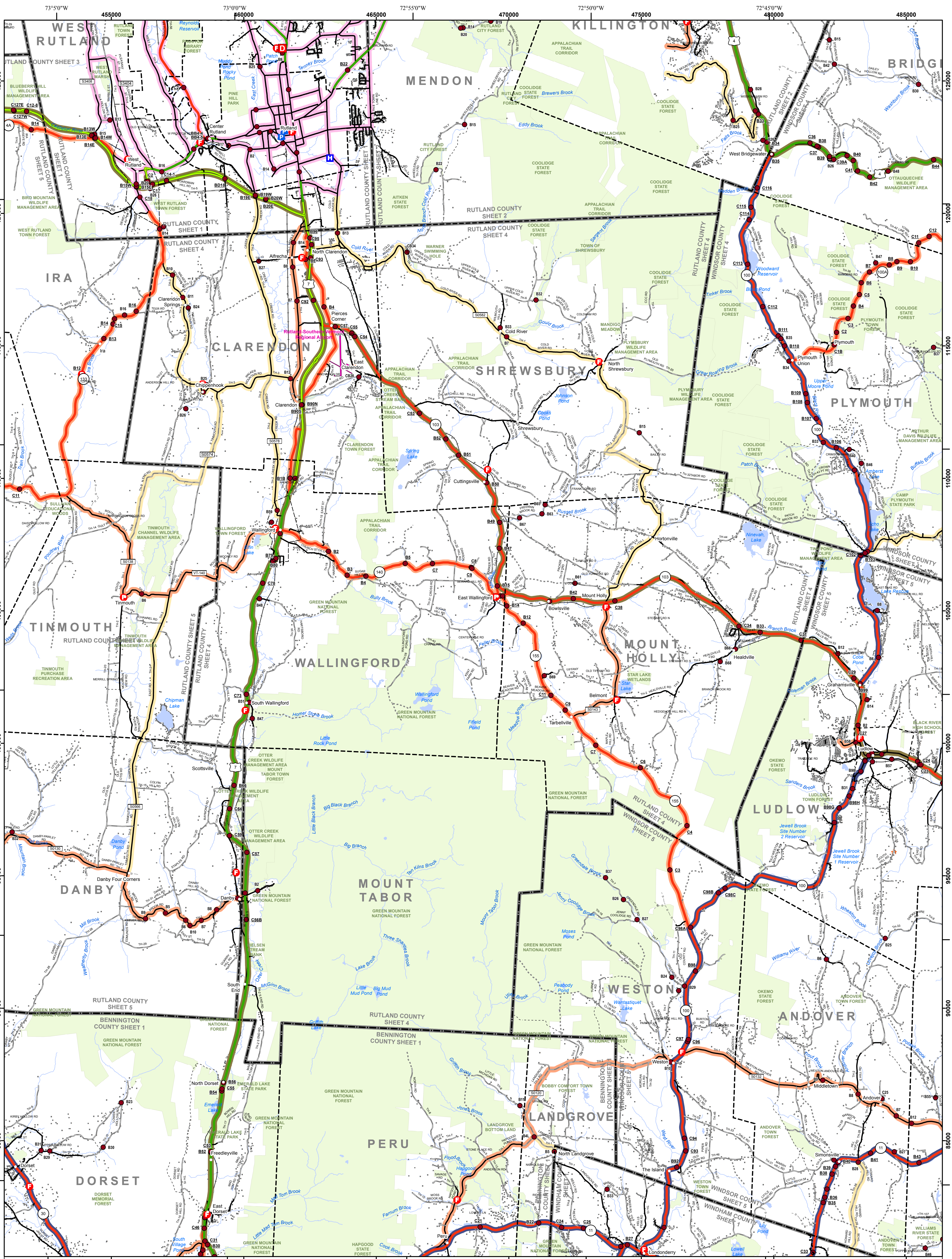
January 2012



Scale: 1:63360 (printed size 24 x 36 inches)

Contact Information: Vermont Agency of Transportation
Division of Policy, Planning and Intermodal Development, Mapping Unit
1 National Life Drive, Montpelier, VT 05633-5001, Telephone: 802-928-2600

This map was funded in part through grants from the Federal Highway Administration, U.S. Department of Transportation. The representation of the authors expressed herein do not necessarily state or reflect those of the U.S. Department of Transportation.



- Interstate
- U.S. Route
- Vermont Route
- Minor Arterial or Collector
- State Route Divided
- State Route Paved
- State Route Unpaved
- Town Highway Paved
- Town Highway Unpaved
- Unimproved or Impassible
- Town Legal Trail
- Discontinued Highway
- Railroad

- Federal Aid Route
- Principal Arterial
- Minor Arterial
- Major Collector
- Federal Aid Urban
- Minor Collector-not Federal Aid eligible
- VTrans District Office
- Police Station
- Fire Station
- Hospital
- Cemetery
- Building
- Localities
- State Capital (Montpelier)
- Bridge or Culvert
- Water Body
- Stream or Brook

- Public Land
- Public Airport
- State Boundary
- County Boundary
- Town Boundary
- Village Boundary
- Urban Compact Boundary
- County Subtle
- B20 / C20 State Bridge or Culvert Identifier
- B20 / C20 Town Bridge or Culvert Identifier

TOWN	TOWN	TOWN
Andover	Ludlow Village	Wallingford
Bridgewater	Mendon	Wallingford U.C.
Castleton	Middletown Springs	West Rutland
Chester	Mount Holly	West Rutland U.C.
Clarendon	Mount Tabor	Weston
Danby	Peru	Windham
Dorset	Plymouth	
Killington	Proctor	
Langgrove	Rutland City	
Londonderry	Shrewsbury	
Ludlow	Tinnmouth	

VERMONT COUNTY - TOWN MAP SERIES
RUTLAND COUNTY SHEET 4 OF 5

Prepared by the
Vermont Agency of Transportation Mapping Unit
 in cooperation with
U.S. Department of Transportation Federal Highway Administration

January 2012

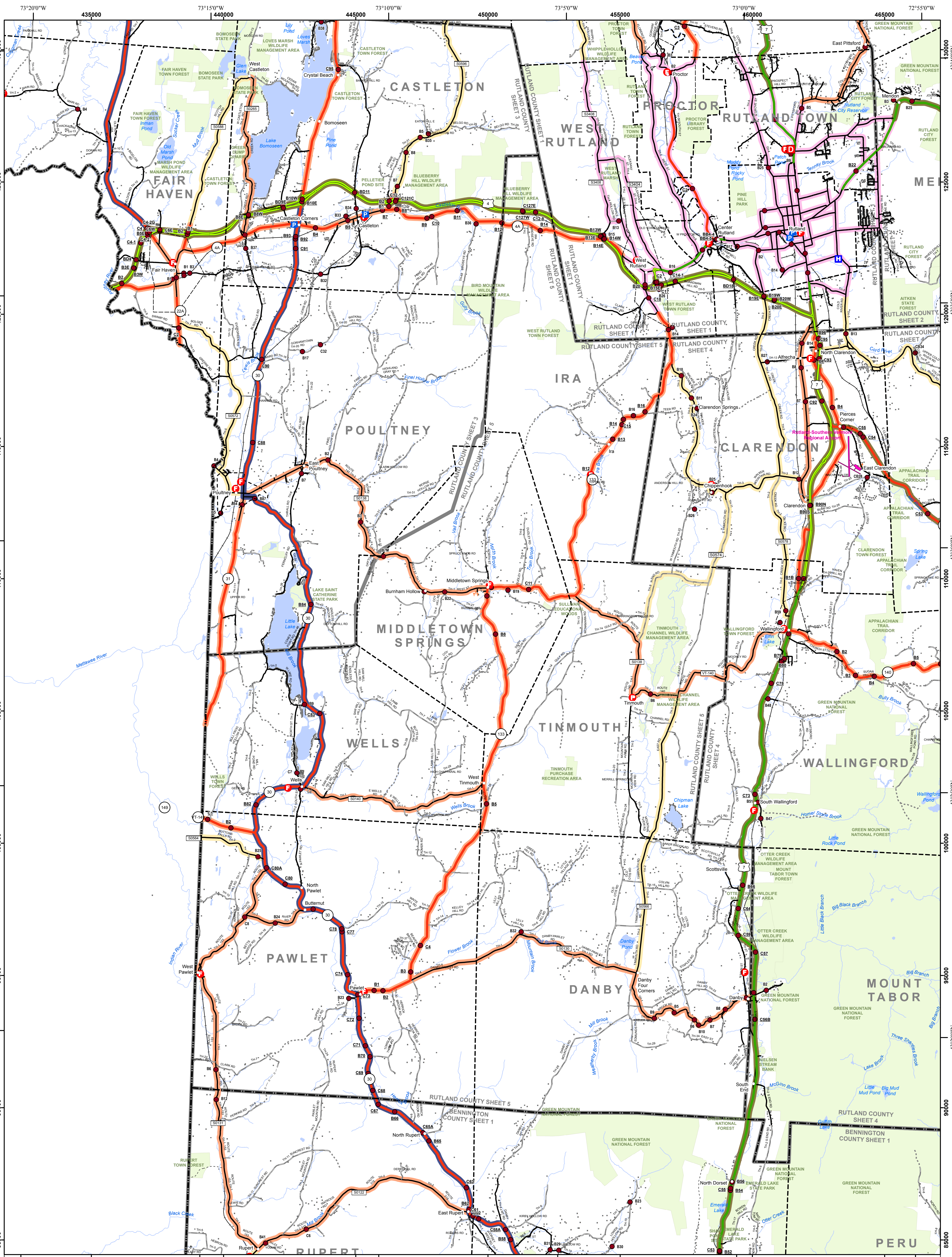
Miles

Scale: 1:63360 (printed size 24 x 36 inches)

N

Contact Information: Vermont Agency of Transportation
 Division of Policy, Planning and Intermodal Development, Mapping Unit
 1 National Life Drive, Montpelier, VT 05633-5001, Telephone: 802-928-2600

This map was funded in part through grants from the Federal Highway Administration, U.S. Department of Transportation. The representation of the authors expressed herein do not necessarily state or reflect those of the U. S. Department of Transportation.



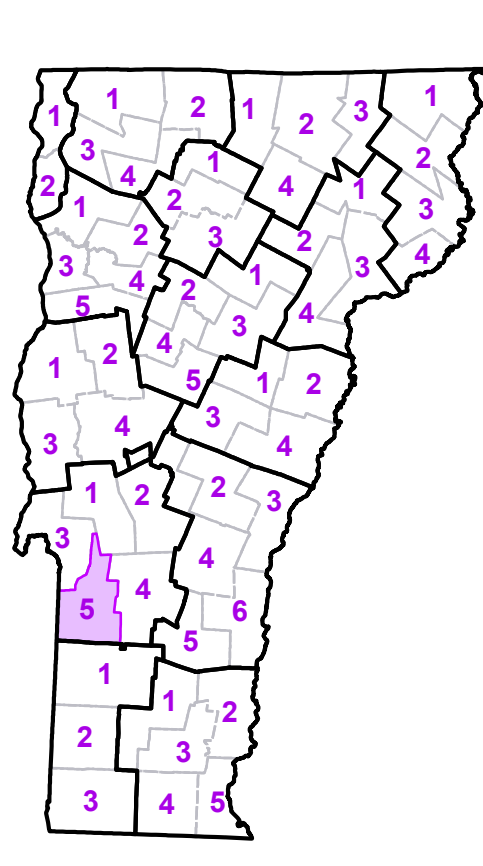
- Interstate
- U.S. Route
- Vermont Route
- Minor Arterial or Collector
- Interstate
- US Route
- State Route Paved
- State Route Unpaved
- Town Highway Paved
- Town Highway Unpaved
- Umimproved or Impassible
- Town Legal Trail
- Discontinued Highway
- Railroad

- Federal Aid Route
- Principal Arterial
- Minor Arterial
- Major Collector
- Federal Aid Urban
- Minor Collector-not Federal Aid eligible
- VTrans District Office
- Police Station
- Fire Station
- Hospital
- Cemetery
- Building
- Localities
- State Capital (Montpelier)
- Bridge or Culvert
- Water Body
- Stream or Brook

- Public Land
- State Airport
- State Boundary
- County Boundary
- Town Boundary
- Village Boundary
- Urban Compact Boundary
- County Subtile
- B20 / C20 State Bridge or Culvert Identifier
- B20 / C20 Town Bridge or Culvert Identifier

TOWN	TOWN	TOWN
Benson	Mount Tabor	Tinmouth
Castleton	Pawlet	Wallingford
Chittenden	Peru	Wallingford U.C.
Clarendon	Pittsford	Wells Town
Danby	Poultney	West Haven
Dorset	Poultney Village	West Rutland
Fair Haven	Proctor	West Rutland U.C.
Hubbardton	Rupert	
Ira	Rutland	
Mendon	Rutland City	
Middletown Springs	Shrewsbury	

Vermont State Plane Coordinate System
 North American Datum of 1983
 SPCS Zone Identifier: 4400
 Geodetic Reference System 80
 5,000-meter grid, Easting - Northing



VERMONT COUNTY - TOWN MAP SERIES
RUTLAND COUNTY SHEET 5 OF 5

Prepared by the
 Vermont Agency of Transportation
 Mapping Unit
 in cooperation with
 U.S. Department of Transportation
 Federal Highway Administration

January 2012

0 1 2
 Miles

Scale: 1:63360 (printed size 24 x 36 inches)

Contact Information: Vermont Agency of Transportation
 Division of Policy, Planning and Intermodal Development, Mapping Unit
 1 National Life Drive, Montpelier, VT 05633-5001, Telephone: 802-928-2600

This map was funded in part through grants from the Federal Highway Administration, U.S. Department of Transportation. The representation of the authors expressed herein do not necessarily state or reflect those of the U. S. Department of Transportation.