

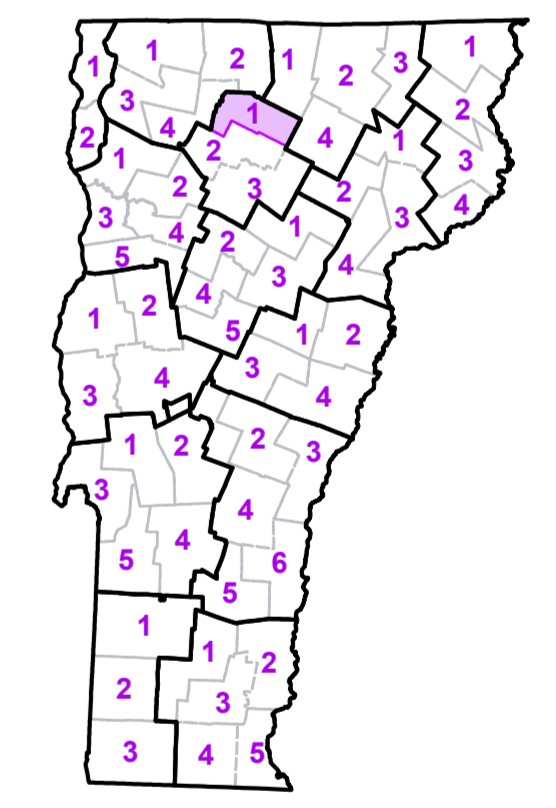
	Interstate
	U.S. Route
	Vermont Route
	Minor Arterial or Collector
	Interstate
	US Route Divided
	US Route
	State Route Paved
	State Route Unpaved
	Town Highway Paved
	Town Highway Unpaved
	Unimproved or Impassible
	Town Legal Trail
	Discontinued Highway
	Railroad

	Federal Aid Route
	Principal Arterial
	Minor Arterial
	Major Collector
	Federal Aid Urban
	Minor Collector * *not Federal Aid eligible
	VTrans District Office

	Emergency Response Site
	Police Station
	Fire Station
	Hospital
	Cemetery
	Building
	Localities
	State Capital (Montpelier)
	Bridge or Culvert
	Water Body
	Stream or Brook
	Public Land
	Public Airport
	State Boundary
	County Boundary
	Town Boundary
	Village Boundary
	Urban Compact Boundary
	County Subtile
	B20 / C20 State Bridge or Culvert Identifier
	B20 / C20 Town Bridge or Culvert Identifier

TOWN	
Albany	
Albany Village	
Bakersfield	
Belvidere	
Cambridge	
Cambridge Village	
Craftsbury	
Eden	
Enosburg	
Fairfield	
Fletcher	
Glover	
Greensboro	
Hardwick	
Hyde Park	
Hyde Park Village	
Irasburg	
Jeffersonville Village	
Johnson	
Johnson Village	
Lowell	
Montgomery	
Morrisville	
Morrisville Village	
Newport	
Sheldon	
Troy	
Underhill	
Waterville	
Westfield	
Wolcott	

Vermont State Plane Coordinate System
 North American Datum of 1983
 SPCS_Zone_Identifier: 4400
 Geodetic Reference System 80
 5,000-meter grid, Easting - Northing

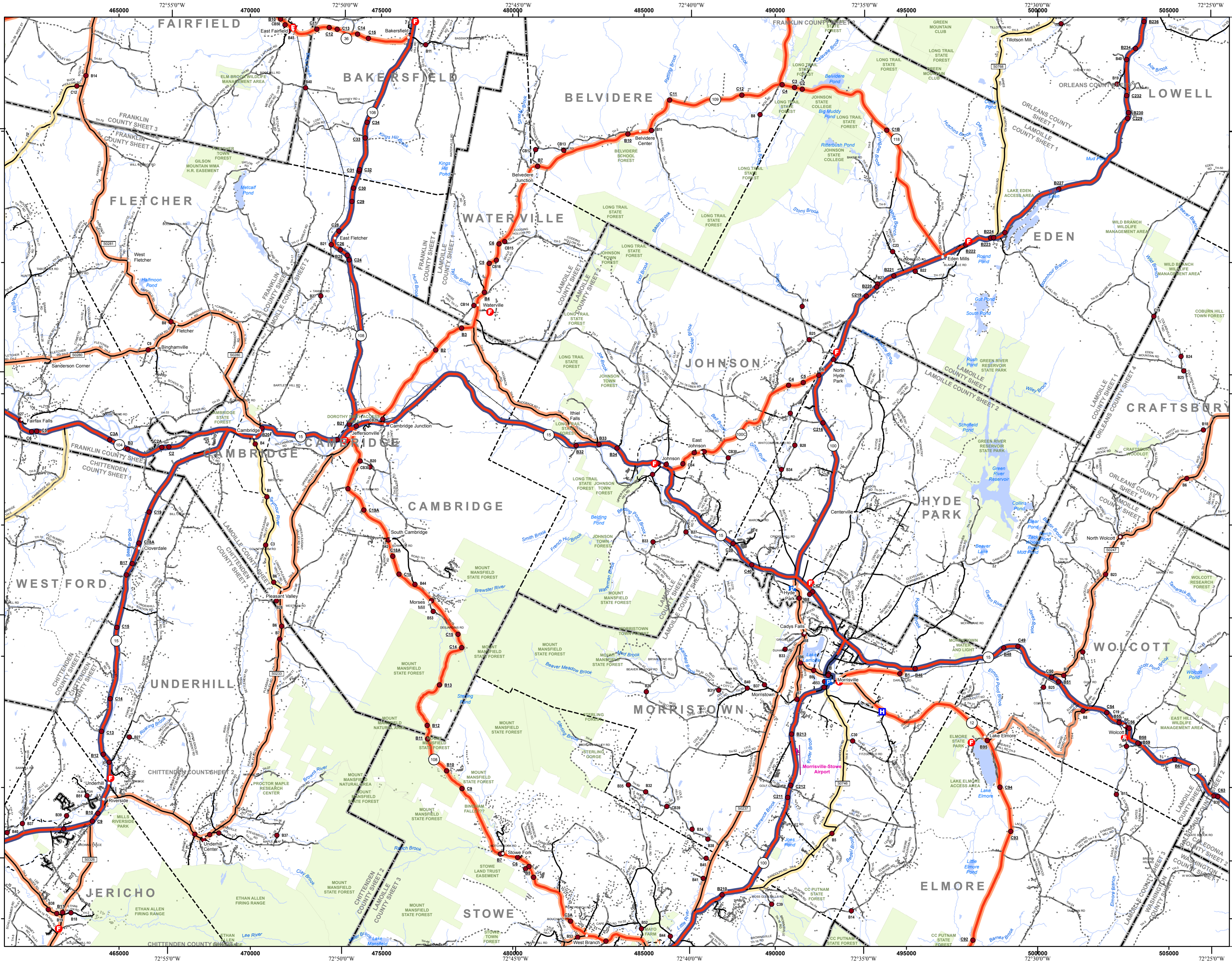


VERMONT
 COUNTY - TOWN MAP SERIES
LAMOILLE COUNTY
 SHEET 1 OF 3

Prepared by the
 Vermont Agency of Transportation
 Mapping Unit
 in cooperation with
 U.S. Department of Transportation
 Federal Highway Administration

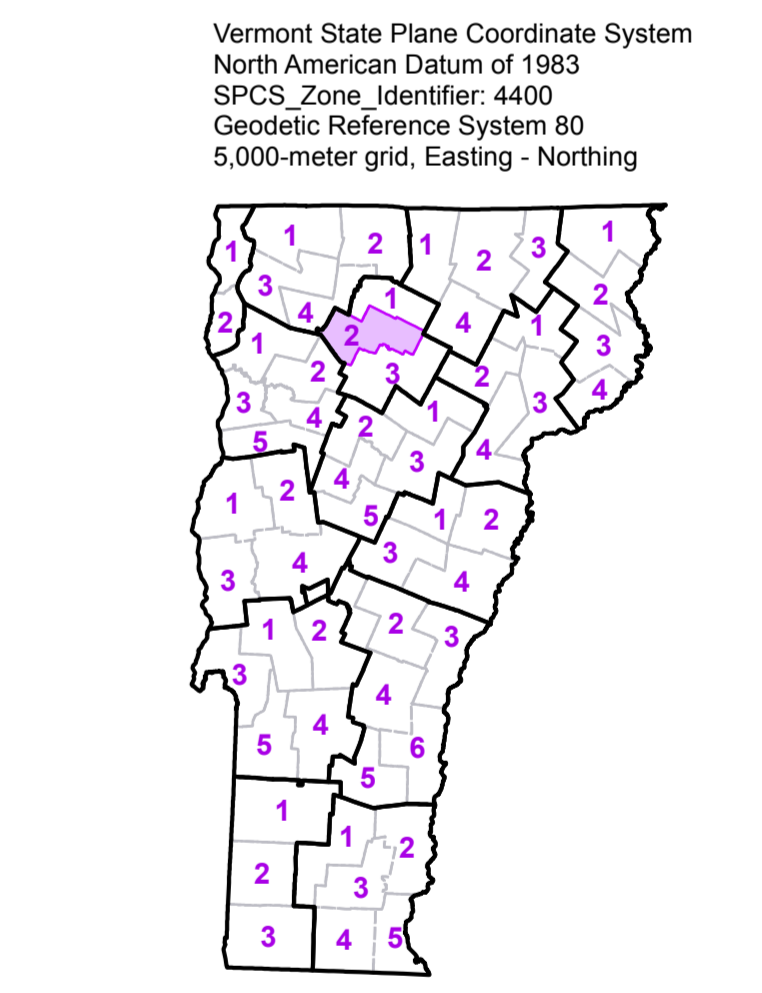
January 2012
 Scale 1:63360 (printed size: 36 x 24 inches)

Contact information: Vermont Agency of Transportation
 Division of Policy, Planning and Intermodal Development, Mapping Unit
 1 National Life Drive, Montpelier, VT 05633-5001
 Telephone: 802-828-2600
 This map was funded in part through grants from the Federal Highway Administration,
 U.S. Department of Transportation. The representation of the authors expressed herein
 do not necessarily state or reflect those of the U.S. Department of Transportation.



- Interstate
 - U.S. Route
 - Vermont Route
 - Minor Arterial or Collector
 - Interstate
 - US Route Divided
 - US Route
 - State Route Paved
 - State Route Unpaved
 - Town Highway Paved
 - Town Highway Unpaved
 - Unimproved or Impassible
 - Town Legal Trail
 - Discontinued Highway
 - Railroad
- Federal Aid Route**
- Principal Arterial
 - Minor Arterial
 - Major Collector
 - Federal Aid Urban
 - Minor Collector *
*not Federal Aid eligible
 - VTrans District Office
- Emergency Response Site**
- Police Station
 - Fire Station
 - Hospital
 - Cemetery
 - Building
 - Localities
 - State Capital (Montpelier)
 - Bridge or Culvert
 - Water Body
 - Stream or Brook
 - Public Land
 - Public Airport
- Boundary Symbols**
- State Boundary
 - County Boundary
 - Town Boundary
 - Village Boundary
 - Urban Compact Boundary
 - County Subtle
- Bridge or Culvert Identifiers**
- B20 / C20** State Bridge or Culvert Identifier
 - B21 / C21** Town Bridge or Culvert Identifier

TOWN	
Albany	
Bakersfield	
Belvidere	
Botton	
Cambridge	
Cambridge Village	
Craftsbury	
Eden	
Elmore	
Essex	
Fairfax	
Fairfield	
Fletcher	
Hardwick	
Hyde Park	
Hyde Park Village	
Jeffersville Village	
Jericho	
Jericho Village	
Johnson	
Johnson Village	
Lowell	
Montgomery	
Morrisdown	
Morrisville Village	
Stowe	
Stowe Village	
Underhill	
Waterville	
Westford	
Woodcort	
Woodbury	
Worcester	



**VERMONT
 COUNTY - TOWN MAP SERIES**

**LAMOILLE COUNTY
 SHEET 2 OF 3**

Prepared by the
**Vermont Agency of Transportation
 Mapping Unit**
 in cooperation with
**U.S. Department of Transportation
 Federal Highway Administration**

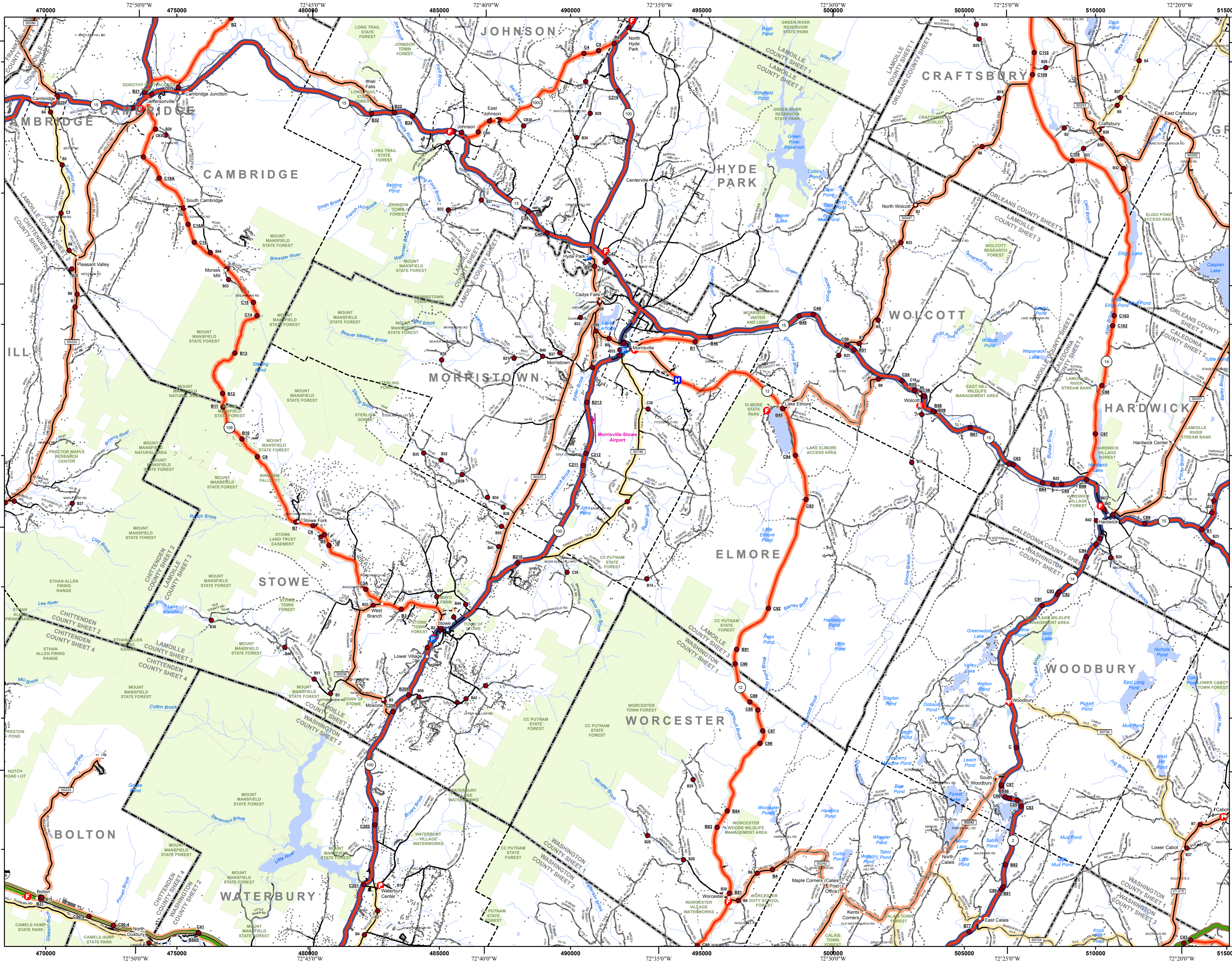
January 2012

0 1 2
 Miles

Scale 1:63360 (printed size: 36 x 24 inches)

Contact information: Vermont Agency of Transportation
 Division of Policy, Planning and Intermodal Development, Mapping Unit
 1 National Life Drive, Montpelier, VT 05633-5001
 Telephone: 802-828-2600

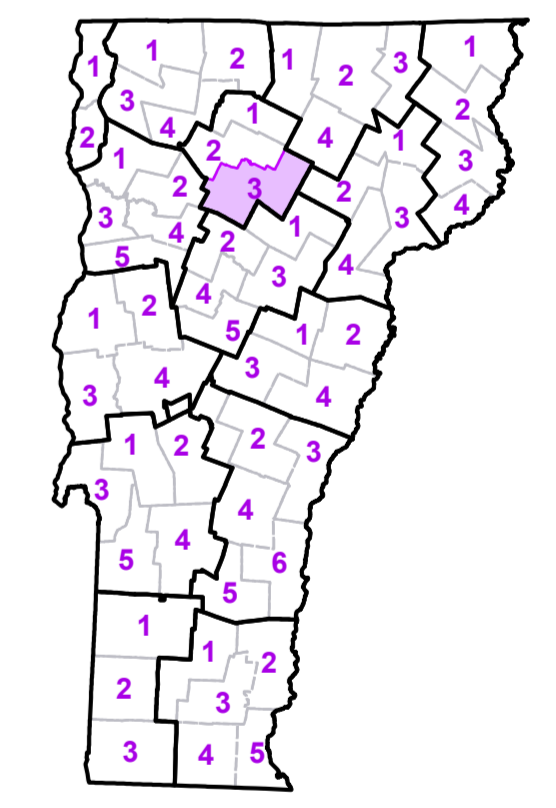
This map was funded in part through grants from the Federal Highway Administration, U.S. Department of Transportation. The representation of the authors expressed herein do not necessarily state or reflect those of the U.S. Department of Transportation.



- Interstate
 - U.S. Route
 - Vermont Route
 - Minor Arterial or Collector
 - Interstate
 - US Route Divided
 - US Route
 - State Route Paved
 - State Route Unpaved
 - Town Highway Paved
 - Town Highway Unpaved
 - Unimproved or Impassible
 - Town Legal Trail
 - Discontinued Highway
 - Railroad
- Federal Aid Route**
- Principal Arterial
 - Minor Arterial
 - Major Collector
 - Federal Aid Urban
 - Minor Collector *
*not Federal Aid eligible
- VTrans District Office**
- Police Station
 - Fire Station
 - Hospital
 - Cemetery
 - Building
 - Localities
 - State Capital (Montpelier)
 - Bridge or Culvert
 - Water Body
 - Stream or Brook
 - Public Land
 - Public Airport
- Emergency Response Site**
- State Boundary
 - County Boundary
 - Town Boundary
 - Village Boundary
 - Urban Compact Boundary
 - County Subtile
- B20 / C20 State Bridge or Culvert Identifier**
- B20 / C20 Town Bridge or Culvert Identifier**

TOWN	
Albany	
Bolton	
Cabot	
Cabot Village	
Calais	
Cambridge	
Cambridge Village	
Craftsbury	
Duxbury	
Eden	
Elmore	
Fletcher	
Glover	
Greensboro	
Hardwick	
Hardwick U.C.	
Hyde Park	
Hyde Park Village	
Jeffersonville Village	
Jericho	
Johnson	
Johnson Village	
Marshfield	
Middlesex	
Morristown	
Morrillville Village	
Stowe	
Stowe Village	
Underhill	
Walden	
Waterbury	
Waterville	
Wolcott	
Woodbury	
Worcester	

Vermont State Plane Coordinate System
 North American Datum of 1983
 SPCS_Zone_Identifier: 4400
 Geodetic Reference System 80
 5,000-meter grid, Easting - Northing



**VERMONT
 COUNTY - TOWN MAP SERIES**
**LAMOILLE COUNTY
 SHEET 3 OF 3**

Prepared by the
**Vermont Agency of Transportation
 Mapping Unit**
 in cooperation with
**U.S. Department of Transportation
 Federal Highway Administration**

January 2012

0 1 2
 Miles

Scale 1:63360 (printed size: 36 x 24 inches)

Contact information: Vermont Agency of Transportation
 Division of Policy, Planning and Intermodal Development, Mapping Unit
 1 National Life Drive, Montpelier, VT 05633-5001
 Telephone: 802-828-2600

This map was funded in part through grants from the Federal Highway Administration,
 U.S. Department of Transportation. The representation of the authors expressed herein
 do not necessarily state or reflect those of the U.S. Department of Transportation.