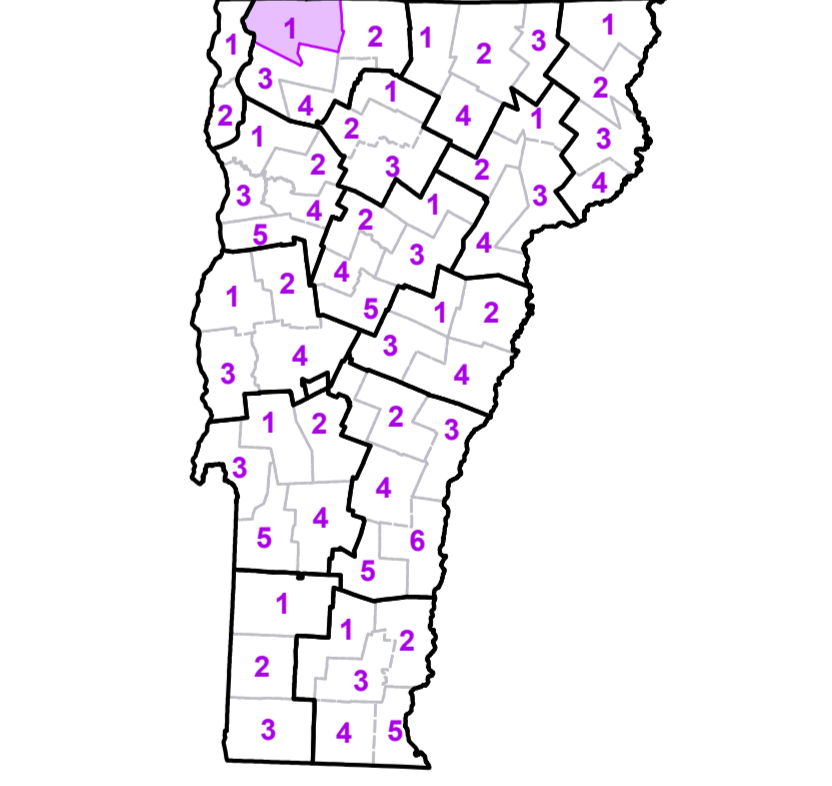


- Interstate
 - U.S. Route
 - Vermont Route
 - Minor Arterial or Collector
 - Interstate
 - US Route Divided
 - US Route
 - State Route Paved
 - State Route Unpaved
 - Town Highway Paved
 - Town Highway Unpaved
 - Unimproved or Impassible
 - Town Legal Trail
 - Discontinued Highway
 - Railroad
- Federal Aid Route**
- Principal Arterial
 - Minor Arterial
 - Major Collector
 - Federal Aid Urban
 - Minor Collector *
* not Federal Aid eligible
- VTrans District Office
- Emergency Response Site**
- Police Station
 - Fire Station
 - Hospital
 - Cemetery
 - Building
 - Localities
 - State Capital (Montpelier)
 - Bridge or Culvert
 - Water Body
 - Stream or Brook
 - Public Land
 - Public Airport
- State Boundary
- County Boundary
- Town Boundary
- Village Boundary
- Urban Compact Boundary
- County Subtile

TOWN
Alburgh
Alburgh Village
Bakersfield
Belvidere
Berkshire
Enosburg
Enosburg Falls Village
Fairfax
Fairfield
Fletcher
Franklin
Georgia
Grand Isle
Highgate
Isle La Motte
North Hero
Sheldon
St. Albans
St. Albans City
Swanton
Swanton Village
Waterville

- B20 / C20 State Bridge or Culvert Identifier
- B20 / C20 Town Bridge or Culvert Identifier

Vermont State Plane Coordinate System
 North American Datum of 1983
 SPCS_Zone_Identifier: 4400
 Geodetic Reference System 80
 5,000-meter grid, Easting - Northing



VERMONT
 COUNTY - TOWN MAP SERIES
FRANKLIN COUNTY
 SHEET 1 OF 4

Prepared by the
 Vermont Agency of Transportation
 Mapping Unit
 in cooperation with
 U.S. Department of Transportation
 Federal Highway Administration

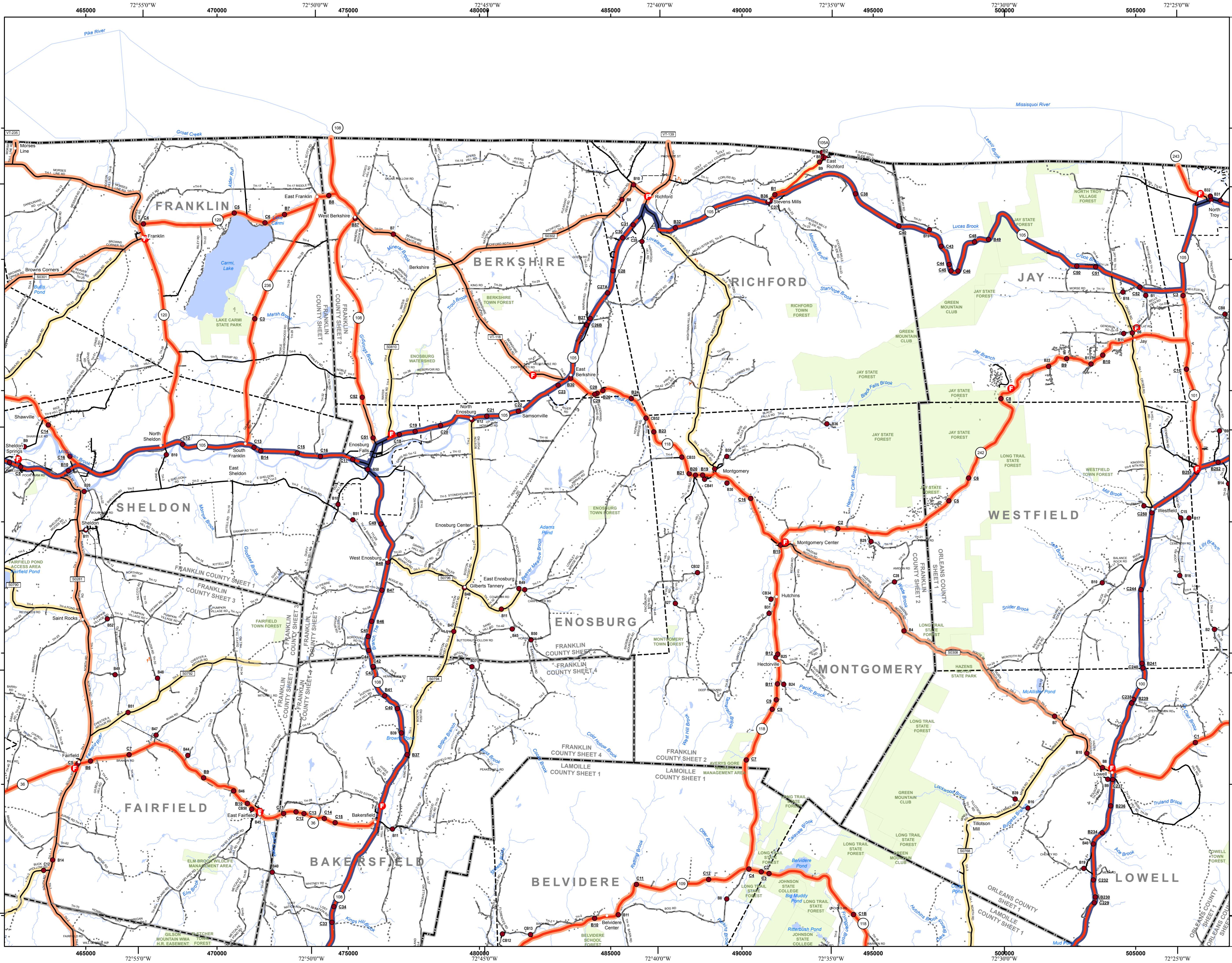
January 2012

0 1 2
 Miles

Scale 1:63360 (printed size: 36 x 24 inches)

Contact information: Vermont Agency of Transportation
 Division of Policy, Planning and Intermodal Development, Mapping Unit
 1 National Life Drive, Montpelier, VT 05633-5001
 Telephone: 802-828-2600

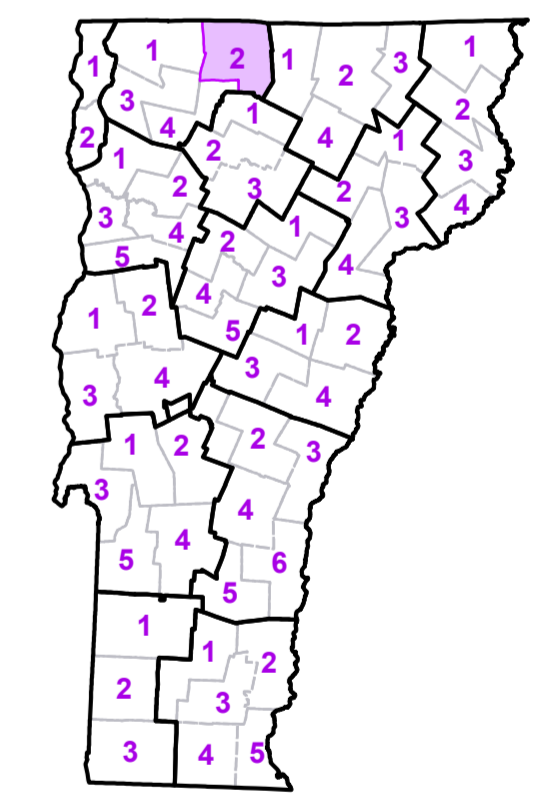
This map was funded in part through grants from the Federal Highway Administration, U.S. Department of Transportation. The representation of the authors expressed herein do not necessarily state or reflect those of the U.S. Department of Transportation.



- Interstate
 - U.S. Route
 - Vermont Route
 - Minor Arterial or Collector
 - Interstate
 - US Route Divided
 - US Route
 - State Route Paved
 - State Route Unpaved
 - Town Highway Paved
 - Town Highway Unpaved
 - Unimproved or Impassible
 - Town Legal Trail
 - Discontinued Highway
 - Railroad
- Federal Aid Route**
- Principal Arterial
 - Minor Arterial
 - Major Collector
 - Federal Aid Urban
 - Minor Collector *
*not Federal Aid eligible
- Emergency Response Site**
- Police Station
 - Fire Station
 - Hospital
 - Cemetery
 - Building
 - Localities
 - State Capital (Montpelier)
 - Bridge or Culvert
 - Water Body
 - Stream or Brook
 - Public Land
 - Public Airport
 - State Boundary
 - County Boundary
 - Town Boundary
 - Village Boundary
 - Urban Compact Boundary
 - County Subtle
- B20 / C20 State Bridge or Culvert Identifier**
- B20 / C20 Town Bridge or Culvert Identifier**

TOWN
Albany
Bakersfield
Belvidere
Berkshire
Eden
Enosburg
Enosburg Falls Village
Fairfield
Fletcher
Franklin
Highgate
Jay
Lowell
Montgomery
North Troy Village
Richard
Richard U.C.
Sheldon
St. Albans
Troy
Wartville
Westfield

Vermont State Plane Coordinate System
 North American Datum of 1983
 SPCS_Zone_Identifier: 4400
 Geodetic Reference System 80
 5,000-meter grid, Easting - Northing



VERMONT
 COUNTY - TOWN MAP SERIES
FRANKLIN COUNTY
 SHEET 2 OF 4

Prepared by the
 Vermont Agency of Transportation
 Mapping Unit
 in cooperation with
 U.S. Department of Transportation
 Federal Highway Administration

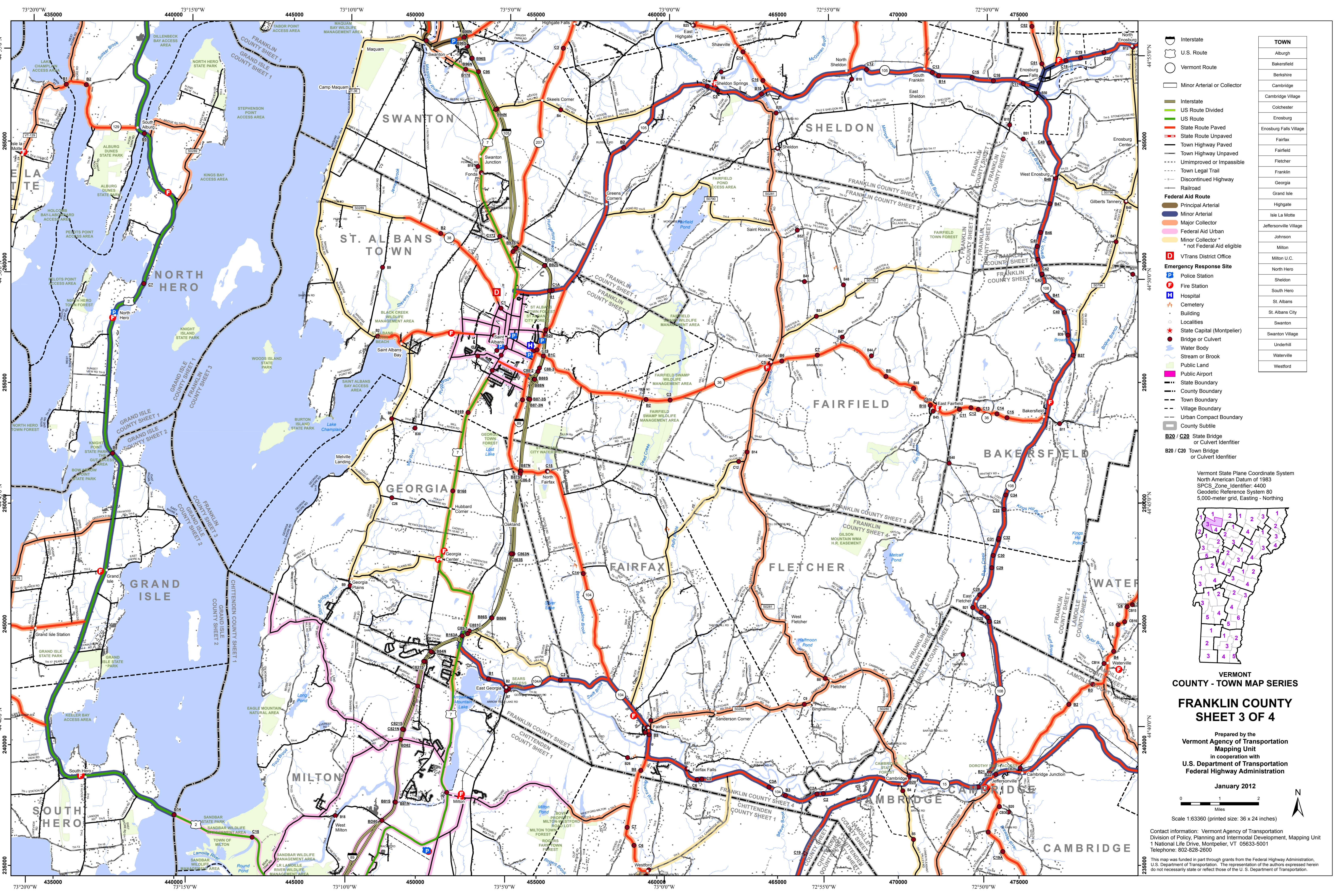
January 2012

0 1 2
 Miles

Scale 1:63360 (printed size: 36 x 24 inches)

Contact information: Vermont Agency of Transportation
 Division of Policy, Planning and Intermodal Development, Mapping Unit
 1 National Life Drive, Montpelier, VT 05633-5001
 Telephone: 802-828-2600

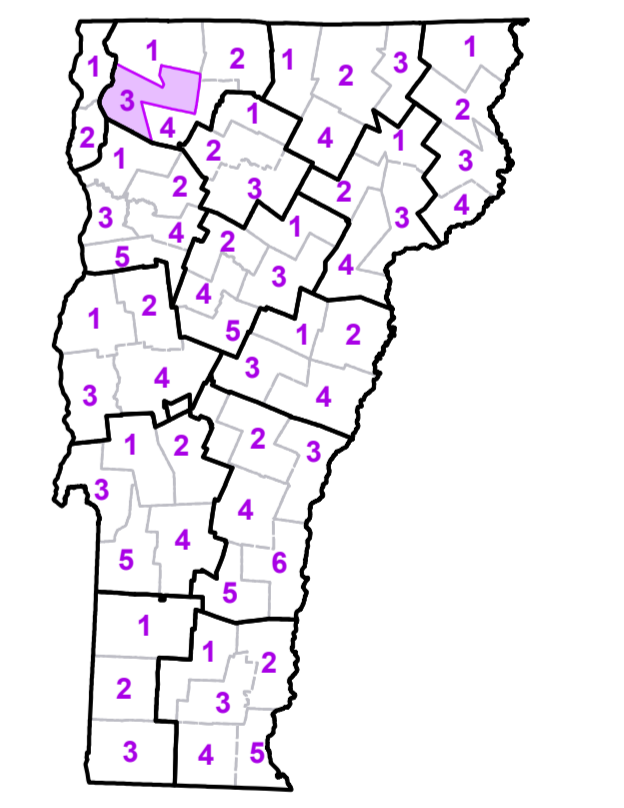
This map was funded in part through grants from the Federal Highway Administration,
 U.S. Department of Transportation. The representation of the authors expressed herein
 do not necessarily state or reflect those of the U.S. Department of Transportation.



	Interstate
	U.S. Route
	Vermont Route
	Minor Arterial or Collector
	Interstate
	US Route Divided
	US Route
	State Route Paved
	State Route Unpaved
	Town Highway Paved
	Town Highway Unpaved
	Unimproved or Impassible
	Town Legal Trail
	Discontinued Highway
	Railroad
	Federal Aid Route
	Principal Arterial
	Minor Arterial
	Major Collector
	Federal Aid Urban
	Minor Collector * * not Federal Aid eligible
	VTrans District Office
	Emergency Response Site
	Police Station
	Fire Station
	Hospital
	Cemetery
	Building
	Localities
	State Capital (Montpelier)
	Bridge or Culvert
	Water Body
	Stream or Brook
	Public Land
	Public Airport
	State Boundary
	County Boundary
	Town Boundary
	Village Boundary
	Urban Compact Boundary
	County Subtle
	B20 / C20 State Bridge or Culvert Identifier
	B20 / C20 Town Bridge or Culvert Identifier

TOWN
Alburgh
Bakersfield
Berkshire
Cambridge
Cambridge Village
Colchester
Enosburg
Enosburg Falls Village
Fairfax
Fairfield
Fletcher
Franklin
Georgia
Grand Isle
Highgate
Ile La Motte
Jeffersonville Village
Johnson
Milton
Milton U.C.
North Hero
Sheldon
South Hero
St. Albans
St. Albans City
Swanton
Swanton Village
Underhill
Waterville
Westford

Vermont State Plane Coordinate System
 North American Datum of 1983
 SPCS_Zone_Identifier: 4400
 Geodetic Reference System 80
 5,000-meter grid, Easting - Northing

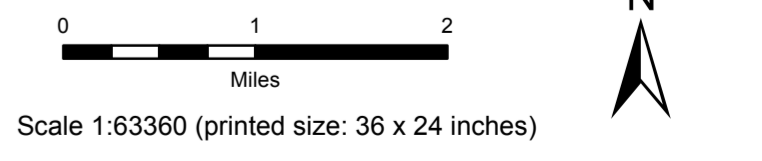


VERMONT
 COUNTY - TOWN MAP SERIES

FRANKLIN COUNTY
 SHEET 3 OF 4

Prepared by the
 Vermont Agency of Transportation
 Mapping Unit
 in cooperation with
 U.S. Department of Transportation
 Federal Highway Administration

January 2012



Contact information: Vermont Agency of Transportation
 Division of Policy, Planning and Intermodal Development, Mapping Unit
 1 National Life Drive, Montpelier, VT 05633-5001
 Telephone: 802-828-2600

This map was funded in part through grants from the Federal Highway Administration,
 U.S. Department of Transportation. The representation of the authors expressed herein
 do not necessarily state or reflect those of the U.S. Department of Transportation.



- Interstate
- U.S. Route
- Vermont Route
- Minor Arterial or Collector
- Interstate
- US Route Divided
- US Route
- State Route Paved
- State Route Unpaved
- Town Highway Paved
- Town Highway Unpaved
- Unimproved or Impassible
- Town Legal Trail
- Discontinued Highway
- Railroad
- Federal Aid Route
 - Principal Arterial
 - Minor Arterial
 - Major Collector
 - Federal Aid Urban
 - Minor Collector *
*not Federal Aid eligible
- VTrans District Office
- Emergency Response Site
 - Police Station
 - Fire Station
 - Hospital
 - Cemetery
 - Building
 - Localities
 - State Capital (Montpelier)
 - Bridge or Culvert
- Water Body
- Stream or Brook
- Public Land
- Public Airport
- State Boundary
- County Boundary
- Town Boundary
- Village Boundary
- Urban Compact Boundary
- County Subtle

TOWN
Bakersfield
Belvidere
Cambridge
Cambridge Village
Colchester
Eden
Enosburg
Enosburg Falls Village
Fairfax
Fairfield
Fletcher
Georgia
Hectorville
Hyde Park
Hyde Park Village
Jeffersonville Village
Johnson
Johnson Village
Milton
Milton U.C.
Montgomery
Morrisstown
Sheldon
St. Albans
St. Albans City
Swanton
Underhill
Waterville
Westford

Vermont State Plane Coordinate System
 North American Datum of 1983
 SPCS_Zone_Identifier: 4400
 Geoidetic Reference System 80
 5,000-meter grid, Easting - Northing

**VERMONT
 COUNTY - TOWN MAP SERIES**

**FRANKLIN COUNTY
 SHEET 4 OF 4**

Prepared by the
**Vermont Agency of Transportation
 Mapping Unit**
 in cooperation with
**U.S. Department of Transportation
 Federal Highway Administration**

January 2012

0 1 2
 Miles

Scale 1:63360 (printed size: 36 x 24 inches)

Contact information: Vermont Agency of Transportation
 Division of Policy, Planning and Intermodal Development, Mapping Unit
 1 National Life Drive, Montpelier, VT 05633-5001
 Telephone: 802-828-2600

This map was funded in part through grants from the Federal Highway Administration, U.S. Department of Transportation. The representation of the authors expressed herein do not necessarily state or reflect those of the U.S. Department of Transportation.