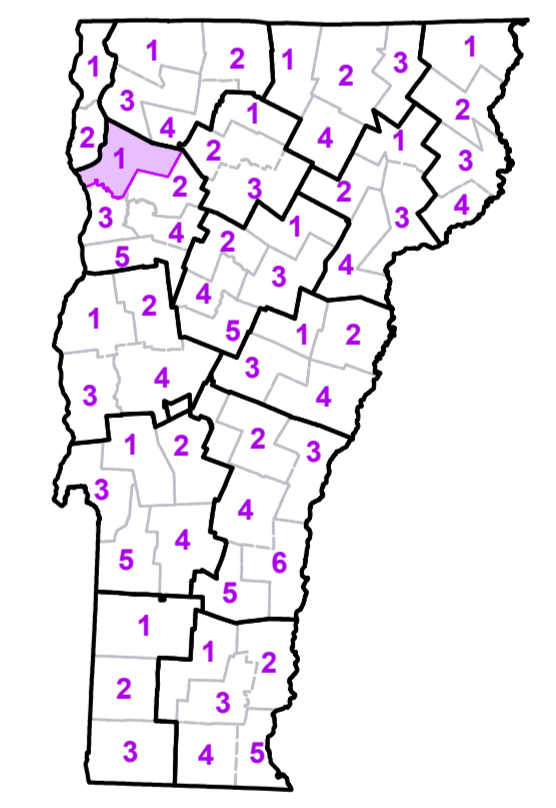




- Interstate
- U.S. Route
- Vermont Route
- Minor Arterial or Collector
- Interstate
- US Route Divided
- US Route
- State Route Paved
- State Route Unpaved
- Town Highway Paved
- Town Highway Unpaved
- Unimproved or Impassible
- Town Legal Trail
- Discontinued Highway
- Railroad
- Federal Aid Route
 - Principal Arterial
 - Minor Arterial
 - Major Collector
 - Federal Aid Urban
 - Minor Collector *
 - * not Federal Aid eligible
- VTrans District Office
- Emergency Response Site
 - Police Station
 - Fire Station
 - Hospital
 - Cemetery
 - Building
 - Localities
 - State Capital (Montpelier)
 - Bridge or Culvert
 - Water Body
 - Stream or Brook
 - Public Land
 - Public Airport
- State Boundary
- County Boundary
- Town Boundary
- Village Boundary
- Urban Compact Boundary
- County Subtle
- B20 / C20 State Bridge or Culvert Identifier
- B20 / C20 Town Bridge or Culvert Identifier

TOWN
Bakersfield
Bolton
Burlington City
Cambridge
Cambridge Village
Colchester
Essex
Essex Center U.C.
Fairfax
Fairfield
Fletcher
Georgia
Grand Isle
Jericho
Jericho Village
Milton
Milton U.C.
North Hero
Shelburne
South Burlington City
South Hero
St. Albans
Underhill
Village of Essex Junction
Westford
Williston
Winooski City

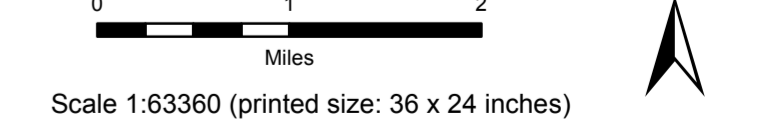
Vermont State Plane Coordinate System
 North American Datum of 1983
 SPCS_Zone_Identifier: 4400
 Geodetic Reference System: 80
 5,000-meter grid, Easting - Northing



**VERMONT
 COUNTY - TOWN MAP SERIES
 CHITTENDEN COUNTY
 SHEET 1 OF 5**

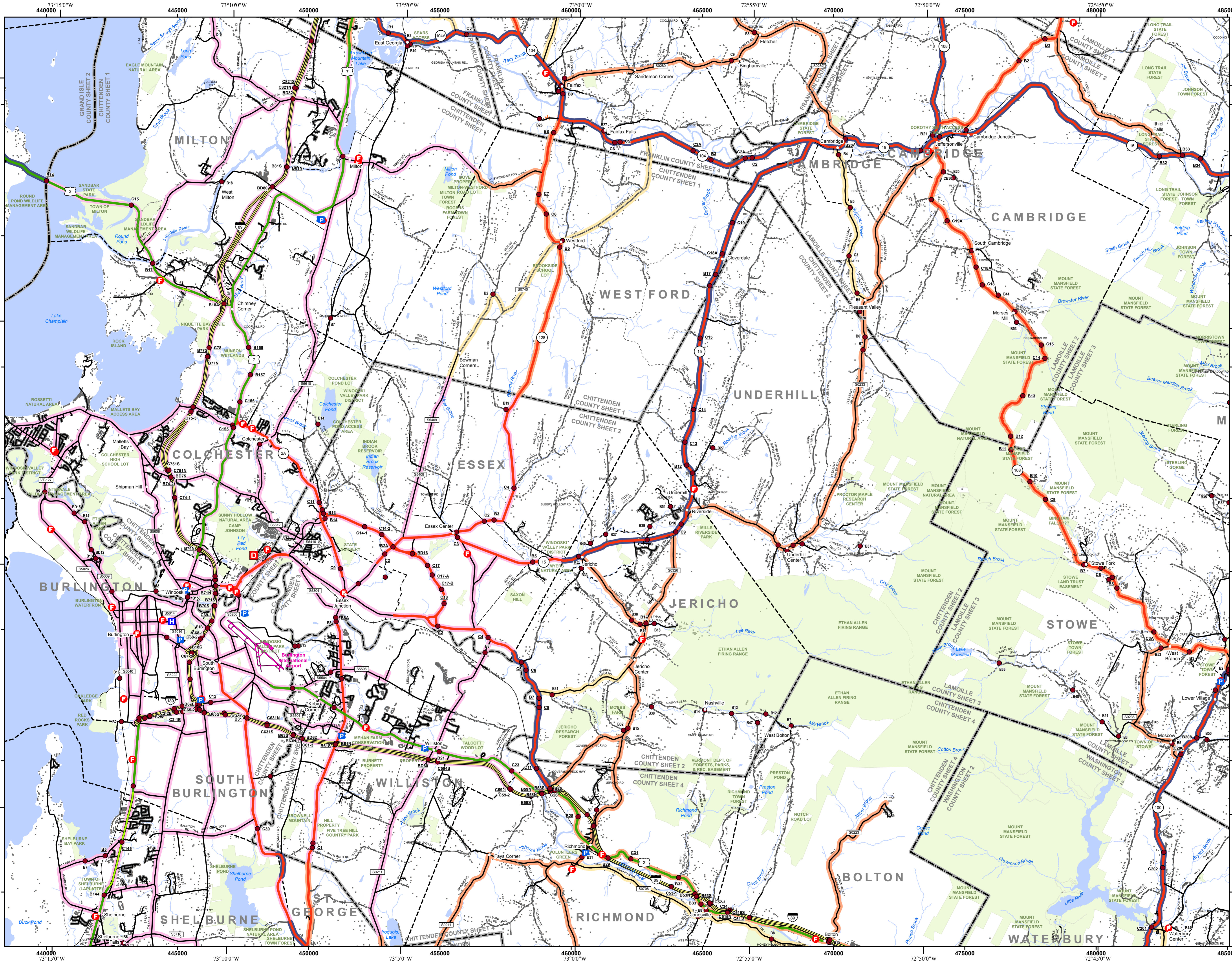
Prepared by the
**Vermont Agency of Transportation
 Mapping Unit**
 in cooperation with
**U.S. Department of Transportation
 Federal Highway Administration**

January 2012



Contact information: Vermont Agency of Transportation
 Division of Policy, Planning and Intermodal Development, Mapping Unit
 1 National Life Drive, Montpelier, VT 05633-5001
 Telephone: 802-828-2600

This map was funded in part through grants from the Federal Highway Administration, U.S. Department of Transportation. The representation of the authors expressed herein do not necessarily state or reflect those of the U.S. Department of Transportation.



TOWN	
Bolton	
Burlington City	
Cambridge	
Cambridge Village	
Colchester	
Essex	
Essex Center U.C.	
Fairfax	
Fletcher	
Georgia	
Grand Isle	
Hinesburg	
Jeffersonville Village	
Jericho	
Jericho Village	
Johnson	
Johnson Village	
Milton	
Milton U.C.	
Morristown	
Richmond	
Shelburne	
South Burlington City	
South Hero	
St. George	
Stowe	
Stowe Village	
Underhill	
Village of Essex Junction	
Waterbury	
Waterville	
Westford	
Williston	
Winooski City	

Vermont State Plane Coordinate System
 North American Datum of 1983
 SPCS_Zone_Identifier: 4400
 Geoidetic Reference System 80
 5,000-meter grid, Easting - Northing

VERMONT COUNTY - TOWN MAP SERIES
CHITTENDEN COUNTY SHEET 2 OF 5

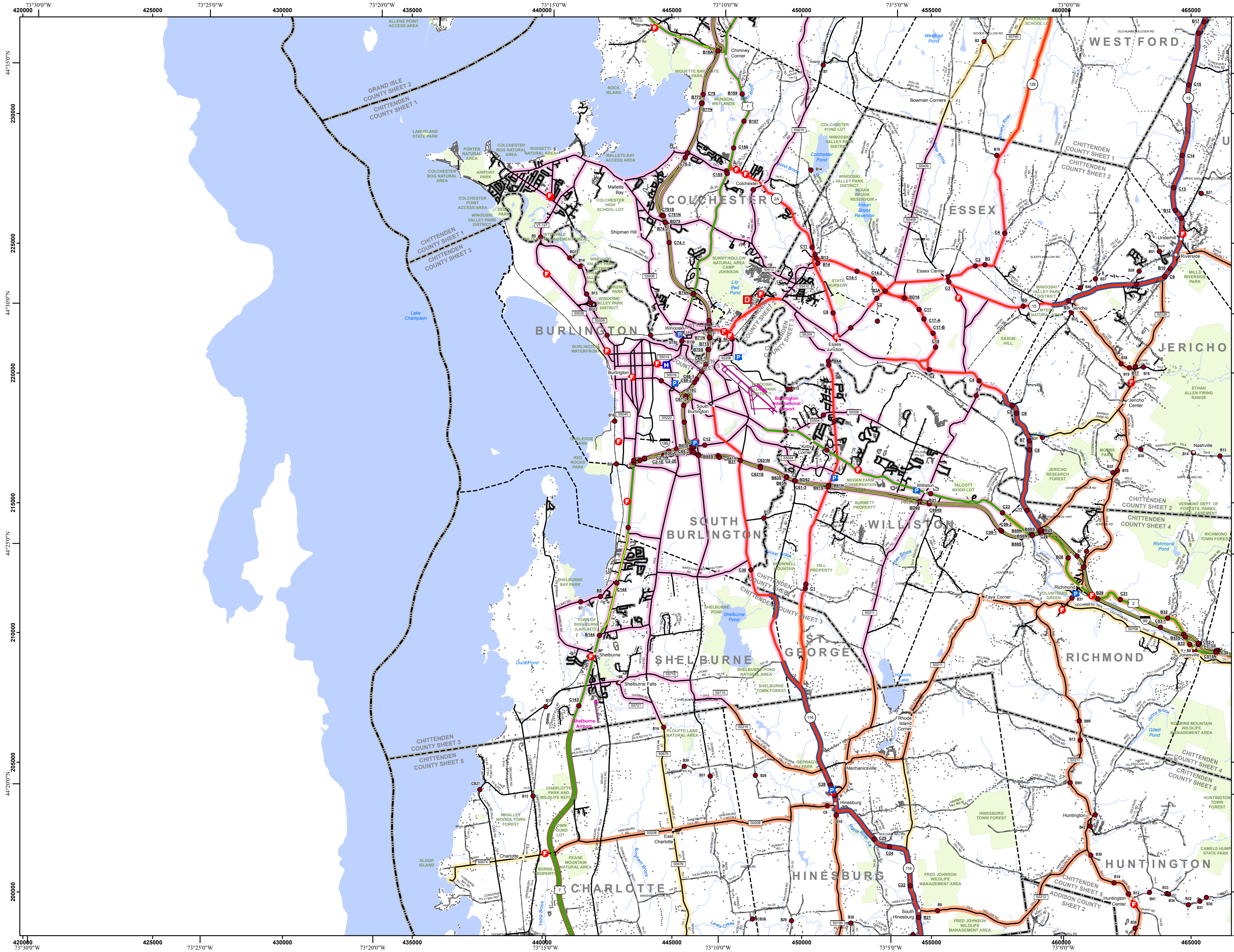
Prepared by the
Vermont Agency of Transportation Mapping Unit
 in cooperation with
U.S. Department of Transportation Federal Highway Administration

January 2012

Scale 1:63360 (printed size: 36 x 24 inches)

Contact information: Vermont Agency of Transportation
 Division of Policy, Planning and Intermodal Development, Mapping Unit
 1 National Life Drive, Montpelier, VT 05633-5001
 Telephone: 802-828-2600

This map was funded in part through grants from the Federal Highway Administration, U.S. Department of Transportation. The representation of the authors expressed herein do not necessarily state or reflect those of the U.S. Department of Transportation.



TOWN	
Bolton	
Burlington City	
Charlotte	
Colchester	
Essex	
Essex Center U.C.	
Hinesburg	
Huntington	
Jericho	
Jericho Village	
Milton	
Richmond	
Shelburne	
South Burlington City	
South Hero	
St. George	
Starksboro	
Underhill	
Village of Essex Junction	
Westford	
Williston	
Winooski City	

- Interstate
- U.S. Route
- Vermont Route
- Minor Arterial or Collector
- Interstate
- US Route Divided
- US Route
- State Route Paved
- State Route Unpaved
- Town Highway Paved
- Town Highway Unpaved
- Unimproved or Impassible
- Town Legal Trail
- Discontinued Highway
- Railroad
- Federal Aid Route
 - Principal Arterial
 - Minor Arterial
 - Major Collector
 - Federal Aid Urban
 - Minor Collector *
 - * not Federal Aid eligible
- VTrans District Office
- Emergency Response Site
 - Police Station
 - Fire Station
 - Hospital
 - Cemetery
 - Building
 - Localities
 - State Capital (Montpelier)
 - Bridge or Culvert
 - Water Body
 - Stream or Brook
 - Public Land
 - Public Airport
 - State Boundary
 - County Boundary
 - Town Boundary
 - Village Boundary
 - Urban Compact Boundary
 - County Subtile
 - B20 / C20 State Bridge or Culvert Identifier
 - B20 / C20 Town Bridge or Culvert Identifier

Vermont State Plane Coordinate System
 North American Datum of 1983
 SPCS_Zone_Identifier: 4400
 Geodetic Reference System 80
 5,000-meter grid, Easting - Northing

VERMONT COUNTY - TOWN MAP SERIES
CHITTENDEN COUNTY SHEET 3 OF 5

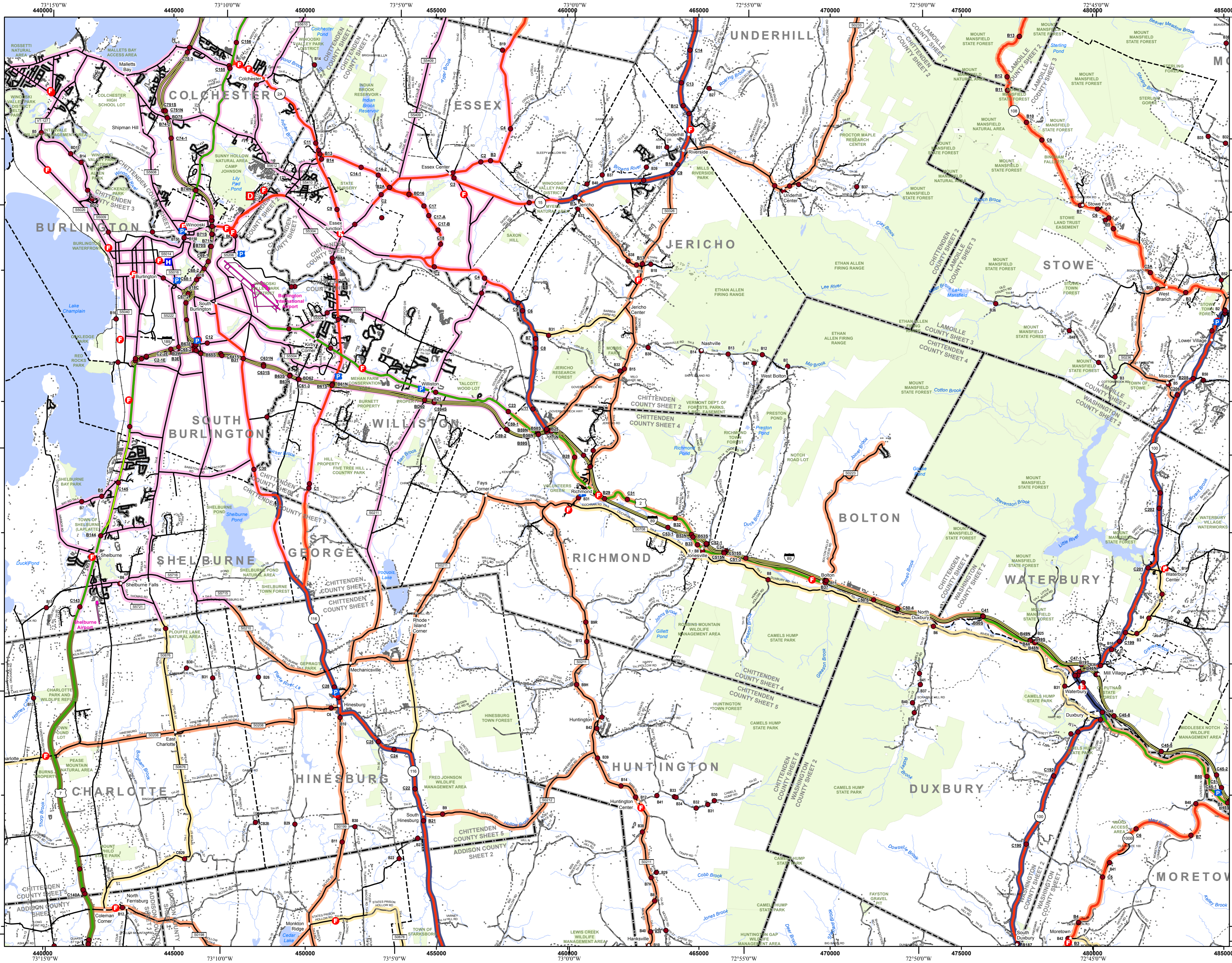
Prepared by the
Vermont Agency of Transportation Mapping Unit
 in cooperation with
U.S. Department of Transportation Federal Highway Administration

January 2012

Scale 1:63360 (printed size: 36 x 24 inches)

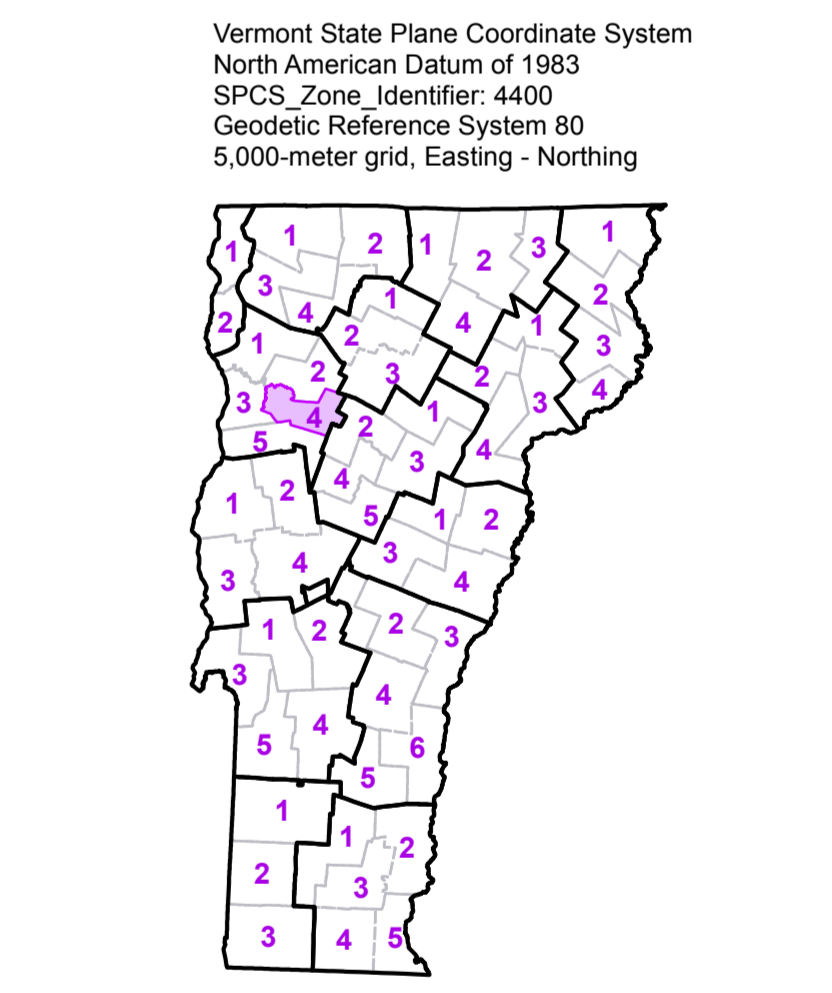
Contact information: Vermont Agency of Transportation
 Division of Policy, Planning and Intermodal Development, Mapping Unit
 1 National Life Drive, Montpelier, VT 05633-5001
 Telephone: 802-828-2600

This map was funded in part through grants from the Federal Highway Administration, U.S. Department of Transportation. The representation of the authors expressed herein do not necessarily state or reflect those of the U.S. Department of Transportation.



- Interstate
- U.S. Route
- Vermont Route
- Minor Arterial or Collector
- Interstate
- US Route Divided
- US Route
- State Route Paved
- State Route Unpaved
- Town Highway Paved
- Town Highway Unpaved
- Unimproved or Impassible
- Town Legal Trail
- Discontinued Highway
- Railroad
- Federal Aid Route
 - Principal Arterial
 - Minor Arterial
 - Major Collector
 - Federal Aid Urban
 - Minor Collector *
*not Federal Aid eligible
- VTrans District Office
- Emergency Response Site**
 - Police Station
 - Fire Station
 - Hospital
 - Cemetery
 - Building
 - Localities
 - State Capital (Montpelier)
 - Bridge or Culvert
 - Water Body
 - Stream or Brook
 - Public Land
 - Public Airport
- State Boundary
- County Boundary
- Town Boundary
- Village Boundary
- Urban Compact Boundary
- County Subtile
- B20 / C20 State Bridge or Culvert Identifier
- B20 / C20 Town Bridge or Culvert Identifier

TOWN
Bolton
Burlington City
Cambridge
Charlotte
Colchester
Duxbury
Essex
Essex Center U.C.
Fayston
Ferrisburgh
Hinesburg
Huntington
Jericho
Jericho Village
Middlesex
Monkton
Moretown
Morristown
Richmond
Shelburne
South Burlington City
St. George
Starksboro
Stowe
Stowe Village
Underhill
Village of Essex Junction
Waterbury
Waterbury
Waterbury
Waterbury Village
Westford
Williston
Winooski City



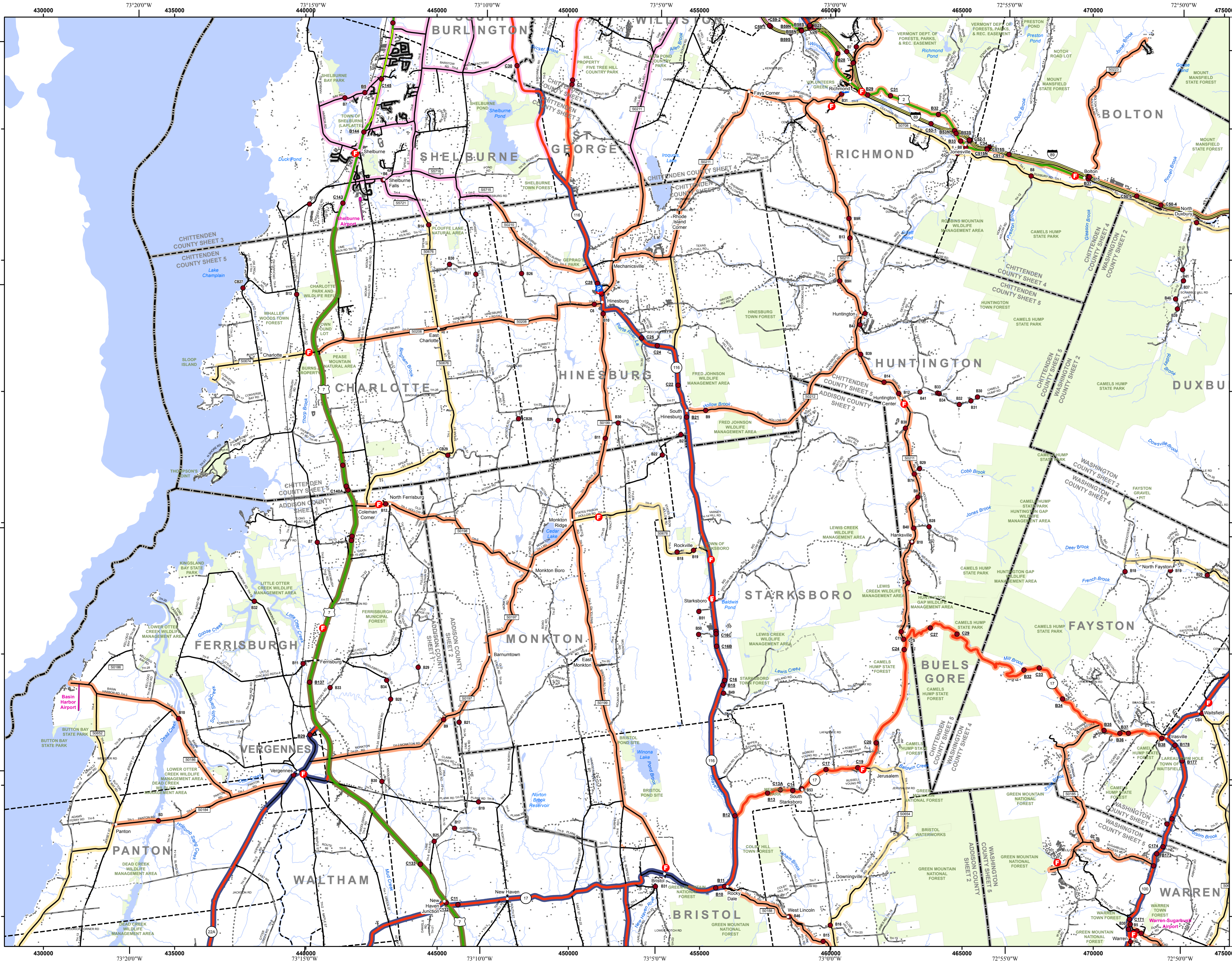
**VERMONT
 COUNTY - TOWN MAP SERIES
 CHITTENDEN COUNTY
 SHEET 4 OF 5**

Prepared by the
**Vermont Agency of Transportation
 Mapping Unit**
 in cooperation with
**U.S. Department of Transportation
 Federal Highway Administration**



Contact information: Vermont Agency of Transportation
 Division of Policy, Planning and Intermodal Development, Mapping Unit
 1 National Life Drive, Montpelier, VT 05633-5001
 Telephone: 802-828-2600

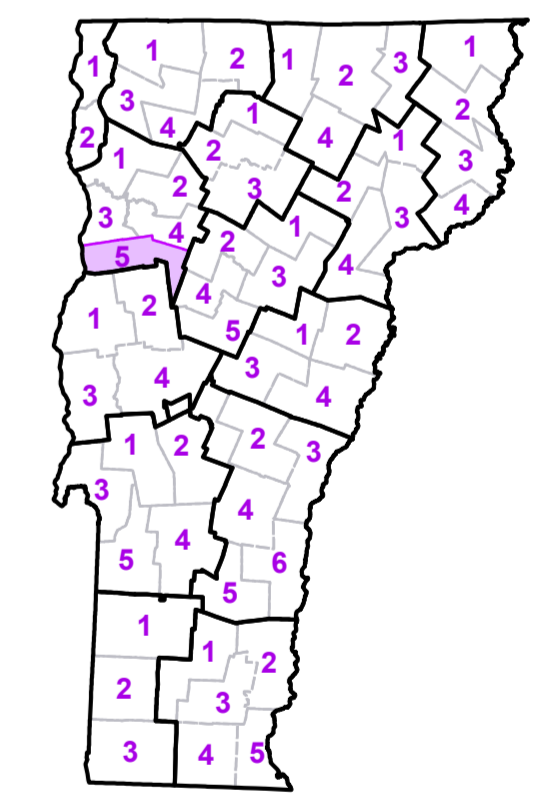
This map was funded in part through grants from the Federal Highway Administration,
 U.S. Department of Transportation. The representation of the authors expressed herein
 do not necessarily state or reflect those of the U.S. Department of Transportation.



- Interstate
 - U.S. Route
 - Vermont Route
 - Minor Arterial or Collector
 - Interstate
 - US Route Divided
 - US Route
 - State Route Paved
 - State Route Unpaved
 - Town Highway Paved
 - Town Highway Unpaved
 - Unimproved or Impassible
 - Town Legal Trail
 - Discontinued Highway
 - Railroad
- Federal Aid Route**
- Principal Arterial
 - Minor Arterial
 - Major Collector
 - Federal Aid Urban
 - Minor Collector *
 - * Not Federal Aid eligible
- VTrans District Office**
- VTrans District Office
- Emergency Response Site**
- Police Station
 - Fire Station
 - Hospital
 - Cemetery
 - Building
 - Localities
 - State Capital (Montpelier)
 - Bridge or Culvert
 - Water Body
 - Stream or Brook
 - Public Land
 - Public Airport
- State Boundary
 - County Boundary
 - Town Boundary
 - Village Boundary
 - Urban Compact Boundary
 - County Subtile
- B20 / C20** State Bridge or Culvert Identifier
- B20 / C20** Town Bridge or Culvert Identifier

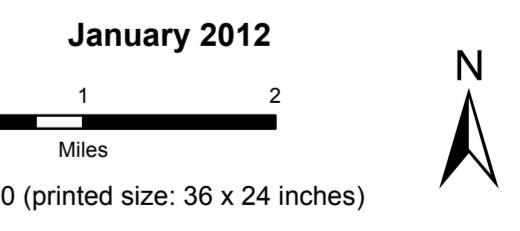
TOWN
Addison
Bolton
Bristol
Bristol Village
Buels Gore
Charlotte
Duxbury
Fayston
Ferrisburgh
Hinesburg
Huntington
Lincoln
Monkton
New Haven
Panton
Richmond
Shelburne
South Burlington City
St. George
Starksboro
Vergennes City
Waitsfield
Waltham
Warren
Waterbury
Williston

Vermont State Plane Coordinate System
 North American Datum of 1983
 SPCS_Zone_Identifier: 4400
 Geodetic Reference System 80
 5,000-meter grid, Easting - Northing



VERMONT COUNTY - TOWN MAP SERIES
CHITTENDEN COUNTY SHEET 5 OF 5

Prepared by the
Vermont Agency of Transportation Mapping Unit
 in cooperation with
U.S. Department of Transportation Federal Highway Administration



Contact information: Vermont Agency of Transportation
 Division of Policy, Planning and Intermodal Development, Mapping Unit
 1 National Life Drive, Montpelier, VT 05633-5001
 Telephone: 802-828-2600

This map was funded in part through grants from the Federal Highway Administration, U.S. Department of Transportation. The representation of the authors expressed herein do not necessarily state or reflect those of the U.S. Department of Transportation.