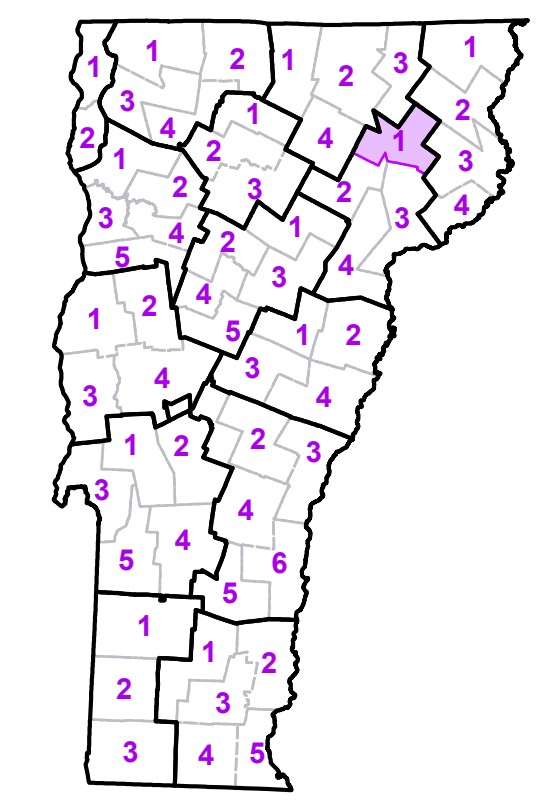


	Interstate
	U.S. Route
	Vermont Route
	Minor Arterial or Collector
	Interstate
	US Route Divided
	US Route
	State Route Paved
	State Route Unpaved
	Town Highway Paved
	Town Highway Unpaved
	Unimproved or Impassible
	Town Legal Trail
	Discontinued Highway
	Railroad
	Federal Aid Route
	Principal Arterial
	Minor Arterial
	Major Collector
	Federal Aid Urban
	Minor Collector * * not Federal Aid eligible
	VTrans District Office
	Emergency Response Site
	Police Station
	Fire Station
	Hospital
	Cemetery
	Building
	Localities
	State Capital (Montpelier)
	Bridge or Culvert
	Water Body
	Stream or Brook
	Public Land
	Public Airport
	State Boundary
	County Boundary
	Town Boundary
	Village Boundary
	Urban Compact Boundary
	County Subtle

TOWN
Albany
Barton
Barton Village
Bloomfield
Brighton
Brownington
Brunswick
Burke
Charleston
Concord
Craftsbury
Danville
East Haven
Ferdinand
Glover
Granby
Greensboro
Hardwick
Irishburg
Island Pond U.C.
Kirby
Lewis
Lunenburg
Lyndon
Lyndonville Village
Newark
Oriens Village
Sheffield
St. Johnsbury
Stannard
Sutton
Victory
Walden
West Burke Village
Westmore
Wheelock

B20 / C20 State Bridge or Culvert Identifier
B20 / C20 Town Bridge or Culvert Identifier

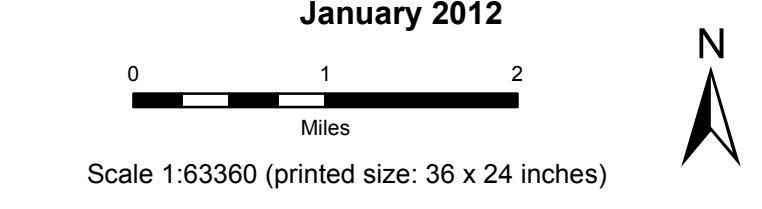
Vermont State Plane Coordinate System
 North American Datum of 1983
 SPCS_Zone_Identifier: 4400
 Geodetic Reference System 80
 5,000-meter grid, Easting - Northing



VERMONT COUNTY - TOWN MAP SERIES
CALEDONIA COUNTY SHEET 1 OF 4

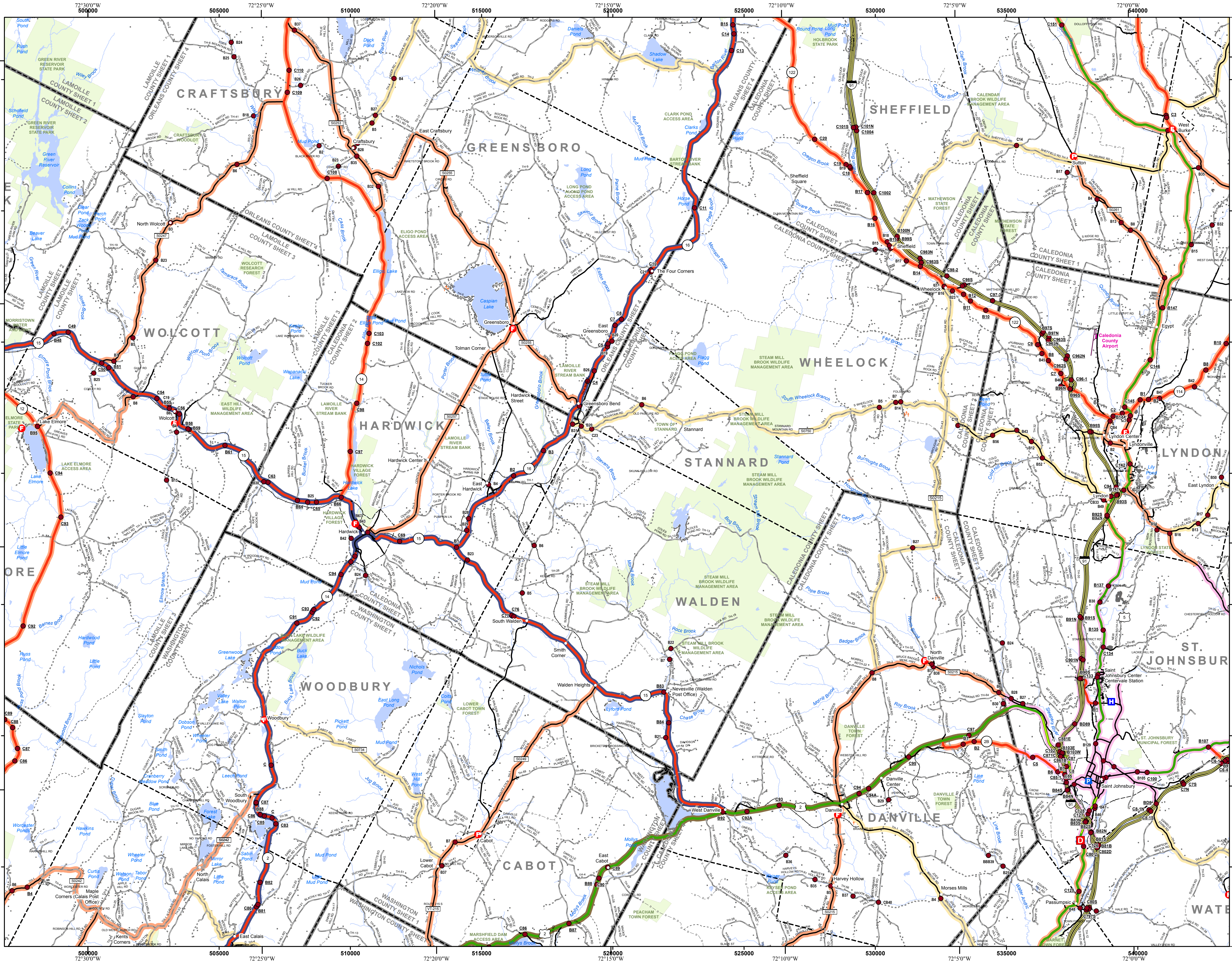
Prepared by the
Vermont Agency of Transportation Mapping Unit
 in cooperation with
U.S. Department of Transportation Federal Highway Administration

January 2012



Contact information: Vermont Agency of Transportation
 Division of Policy, Planning and Intermodal Development, Mapping Unit
 1 National Life Drive, Montpelier, VT 05633-5001
 Telephone: 802-828-2600

This map was funded in part through grants from the Federal Highway Administration, U.S. Department of Transportation. The representation of the authors expressed herein do not necessarily state or reflect those of the U.S. Department of Transportation.

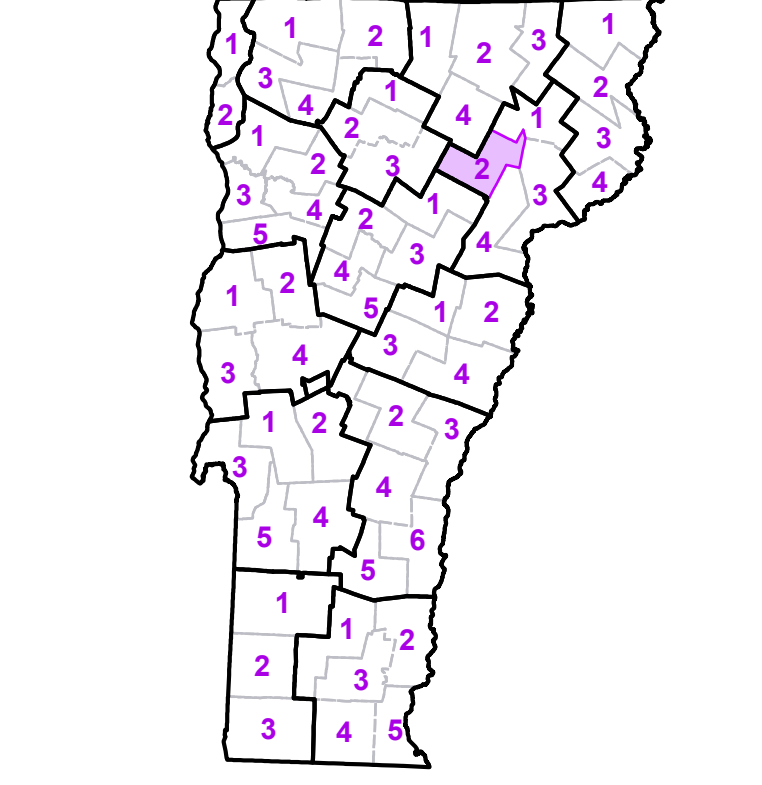


	Interstate
	U.S. Route
	Vermont Route
	Minor Arterial or Collector
	Interstate
	US Route Divided
	US Route
	State Route Paved
	State Route Unpaved
	Town Highway Paved
	Town Highway Unpaved
	Unimproved or Impassible
	Town Legal Trail
	Discontinued Highway
	Railroad
	Federal Aid Route
	Principal Arterial
	Minor Arterial
	Major Collector
	Federal Aid Urban
	Minor Collector
	Vtrans District Office
	Emergency Response Site
	Police Station
	Fire Station
	Hospital
	Cemetery
	Building
	Localities
	State Capital (Montpelier)
	Bridge or Culvert
	Water Body
	Stream or Brook
	Public Land
	Public Airport
	State Boundary
	County Boundary
	Town Boundary
	Village Boundary
	Urban Compact Boundary
	County Subtle

TOWN
Albany
Barnet
Burke
Cabot
Cabot Village
Calais
Craftsbury
Danville
Eden
Elmore
Glover
Greensboro
Hardwick
Hardwick U.C.
Hyde Park
Kirby
Lyndon
Lyndonville Village
Marshfield
Morristown
Newark
Peacham
Sheffield
St. Johnsbury
St. Johnsbury U.C.
Stannard
Sutton
Walden
Waterford
West Burke Village
Wheelock
Wolcott
Woodbury
Worcester

B20 / C20 State Bridge or Culvert Identifier
B2 / C20 Town Bridge or Culvert Identifier

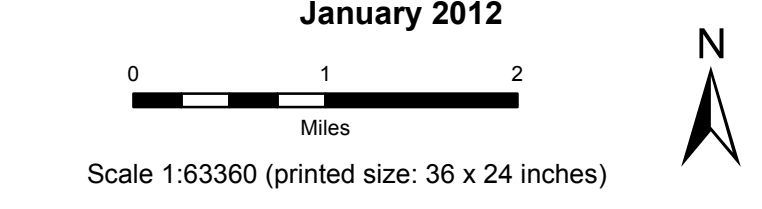
Vermont State Plane Coordinate System
 North American Datum of 1983
 SPCS_Zone_Identifier: 4400
 Geodetic Reference System 80
 5,000-meter grid, Easting - Northing



VERMONT
 COUNTY - TOWN MAP SERIES
CALEDONIA COUNTY
 SHEET 2 OF 4

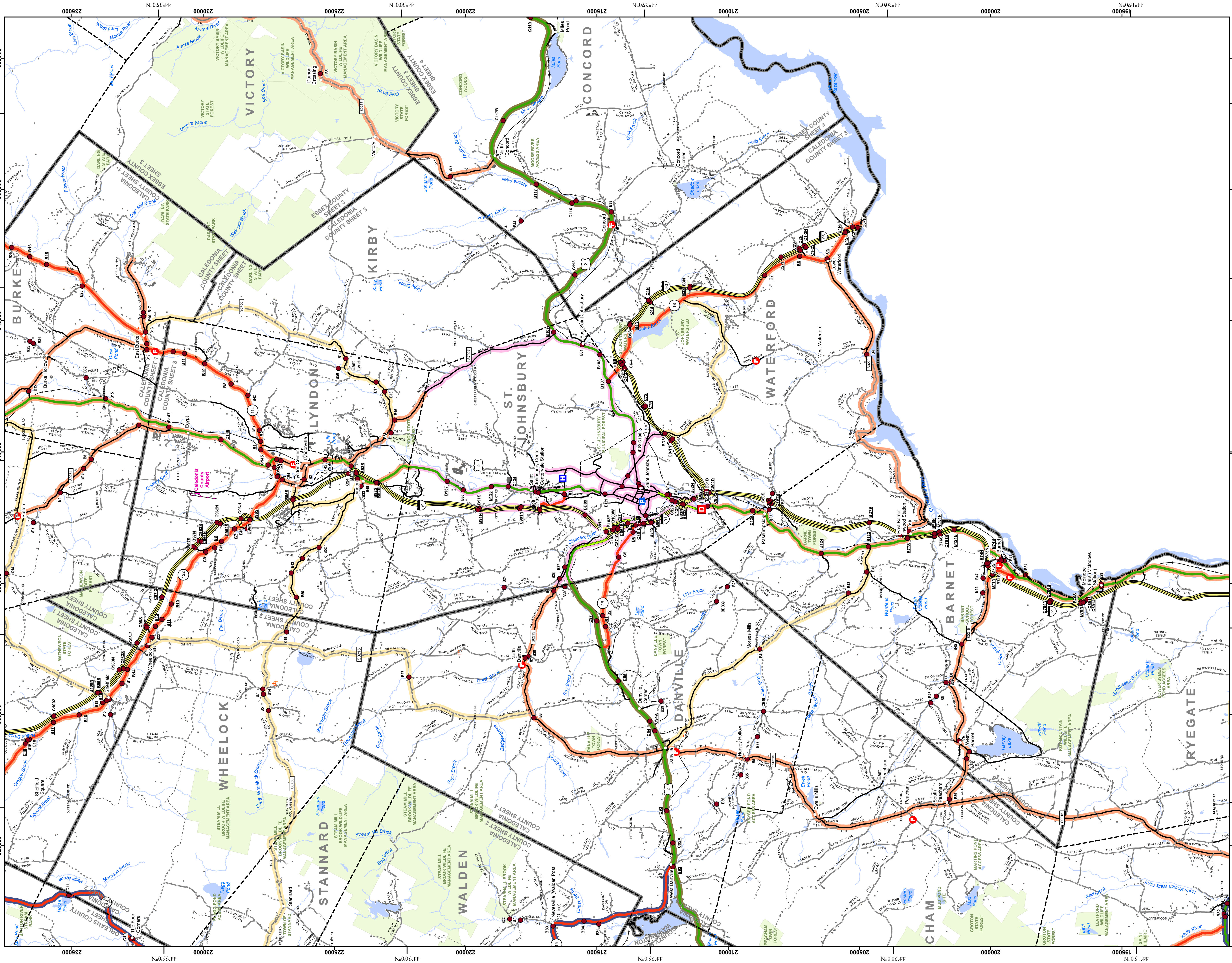
Prepared by the
 Vermont Agency of Transportation
 Mapping Unit
 in cooperation with
 U.S. Department of Transportation
 Federal Highway Administration

January 2012

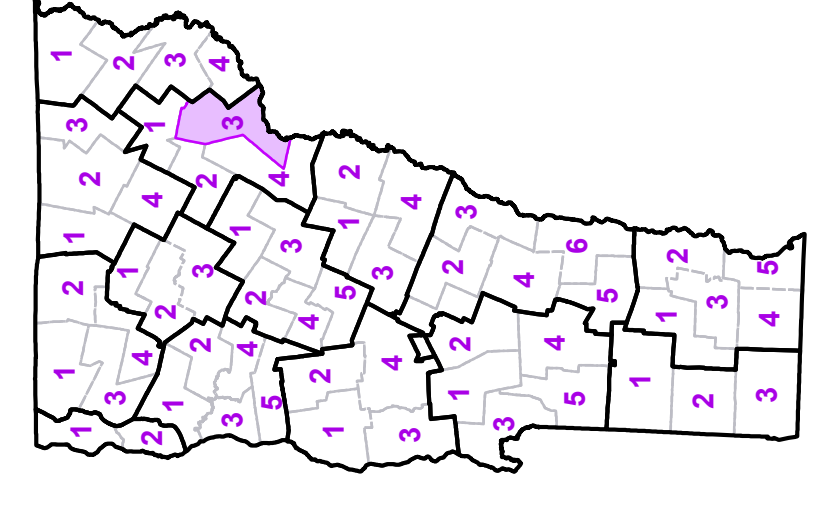


Contact information: Vermont Agency of Transportation
 Division of Policy, Planning and Intermodal Development, Mapping Unit
 1 National Life Drive, Montpelier, VT 05633-5001
 Telephone: 802-828-2600

This map was funded in part through grants from the Federal Highway Administration,
 U.S. Department of Transportation. The representation of the authors expressed herein
 do not necessarily state or reflect those of the U.S. Department of Transportation.

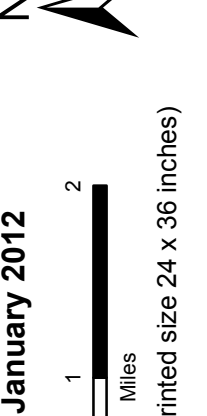


TOWN	TOWN	TOWN
Barnet	Lyndonville	Waterford
Burke	Lyndon	West Burke Village
Cabot	Lyndonville Village	Wheateck
Concord	Peacham	
Danville	Ryegate	
East Haven	Sheffield	
Glover	St. Johnsbury	
Granby	St. Johnsbury U.C.	
Greensboro	Stannard	
Groton	Sutton	
Groton Village	Victory	
Kirby	Valden	



VERMONT
 COUNTY - TOWN MAP SERIES
CALEDONIA COUNTY
SHEET 3 OF 4

Prepared by the
 Vermont Agency of Transportation
 Mapping Unit
 in cooperation with
 U.S. Department of Transportation
 Federal Highway Administration

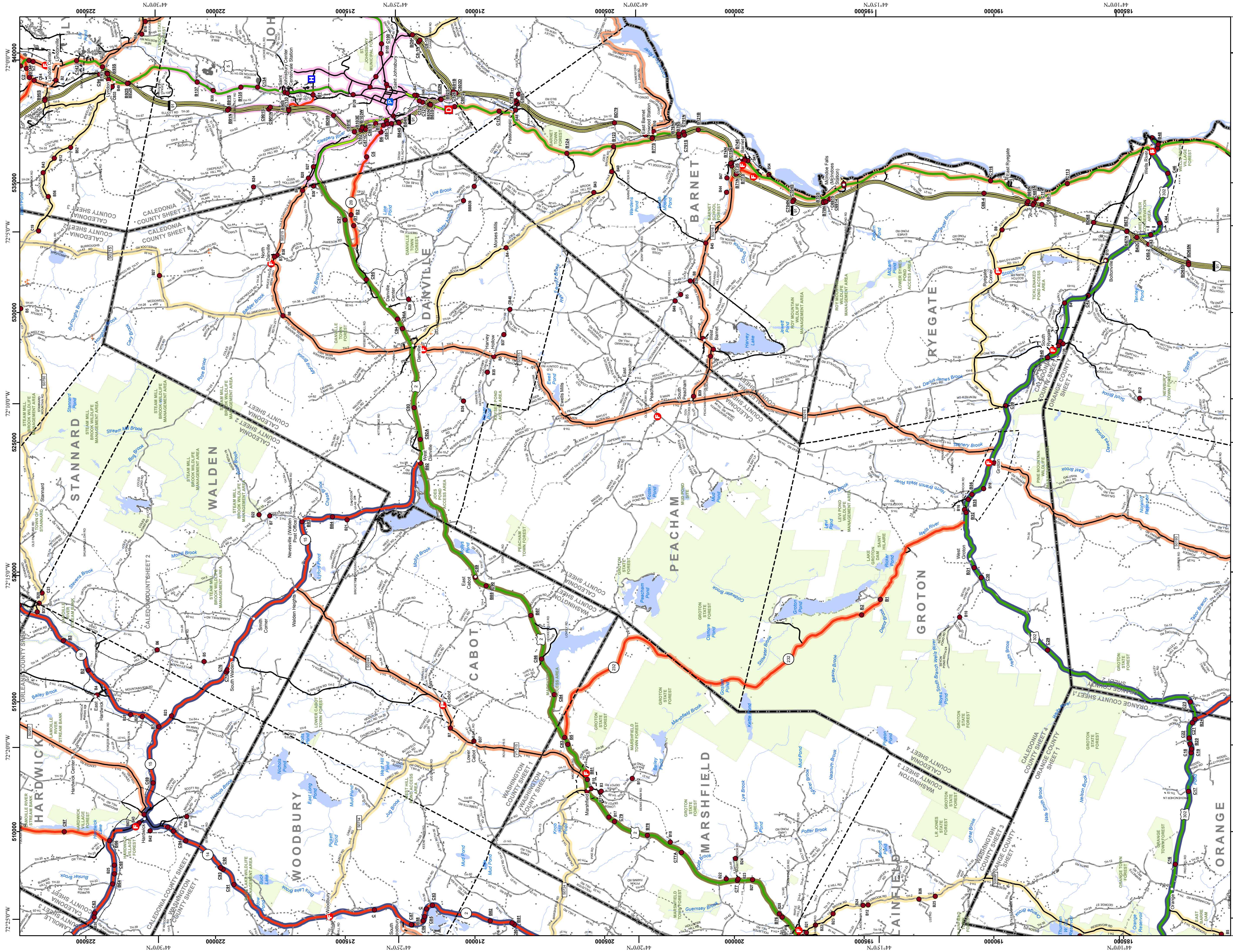


Scale: 1:63360 (printed size 24 x 36 inches)

Contact Information: Vermont Agency of Transportation
 1 National Life Drive, Montpelier, VT 05633-5001, Telephone: 802-628-2600

- Interstate
 - U.S. Route
 - Vermont Route
 - Minor Arterial or Collector
 - US Route Divided
 - State Route Paved
 - State Route Unpaved
 - Town Highway Paved
 - Town Highway Unpaved
 - Unimproved or Impassible
 - Town Legal Trail
 - Discontinued Highway
 - Railroad
 - Public Land
 - State Boundary
 - County Boundary
 - Town Boundary
 - Village Boundary
 - Urban Compact Boundary
 - County Subtle
 - Emergency Response Site
 - Police Station
 - Fire Station
 - Hospital
 - Cemetery
 - Building
 - Localities
 - State Capital (Montpelier)
 - Bridge or Culvert
 - Water Body
 - Stream or Brook
 - B20 / C20 State Bridge or Culvert Identifier
 - B20 / C20 Town Bridge or Culvert Identifier
- Vermont State Plane Coordinate System
 North American Datum of 1983
 SPCS Vermont Zone 1800
 Geoid Reference System 80
 5,000-meter grid. Easting - Northing

This map was funded in part through grants from the Federal Highway Administration, U.S. Department of Transportation. The representation of the authors expressed herein do not necessarily state or reflect those of the U.S. Department of Transportation.



TOWN	TOWN	TOWN
Barnet	Lynntonville Village	Topsham
Barre	Marshfield	Walden
Cabot	Marshfield Village	Waterford
Cabot Village	Newbury	Wells River Village
Caledonia	Orange	Wheesack
Danville	Peacham	Wolcott
Greensboro	Plainfield	Woodbury
Groton	Ryegate	
Groton Village	South Ryegate Village	
Hardwick	St. Johnsbury	
Hardwick U.C.	St. Johnsbury U.C.	
Lyndon	St. Johnsbury U.C.	
	Lyndon	Stannard

- Public Land
- Public Airport
- State Boundary
- County Boundary
- Town Boundary
- Village Boundary
- Urban Compact Boundary
- County Subtle
- B20 / C20 State Bridge or Culvert Identifier
- B20 / C20 Town Bridge or Culvert Identifier

- Federal Aid Route
- Principal Arterial
- Minor Arterial
- Major Collector
- Federal Aid Urban
- Minor Collector-not Federal Aid eligible
- VTrans District Office
- Emergency Response Site
- Police Station
- Fire Station
- Hospital
- Cemetery
- Building
- Localities
- State Capital (Montpelier)
- Bridge or Culvert
- Water Body
- Stream or Brook
- Minor Arterial or Collector
- Interstate
- US Route Divided
- US Route
- State Route Paved
- State Route Unpaved
- Town Highway Paved
- Town Highway Unpaved
- Unimproved or Impassable
- Town Legal Trail
- Discontinued Highway
- Railroad

Vermont State Plane Coordinate System
 North American Datum of 1983
 SPCS 83
 Geoid Reference System 80
 5,000-meter grid. Easting - Northing

**VERMONT
 COUNTY - TOWN MAP SERIES
 CALEDONIA COUNTY
 SHEET 4 OF 4**

Prepared by the
 Vermont Agency of Transportation
 Mapping Unit
 In cooperation with
 U.S. Department of Transportation
 Federal Highway Administration

January 2012

Scale: 1:63,360 (printed size 24 x 36 inches)

Contact Information: Vermont Agency of Transportation
 1 National Life Drive, Montpelier, VT 05633-5001, Telephone: 802-628-2600

This map was funded in part through grants from the Federal Highway Administration, U.S. Department of Transportation. The representation of the authors expressed herein do not necessarily state or reflect those of the U.S. Department of Transportation.