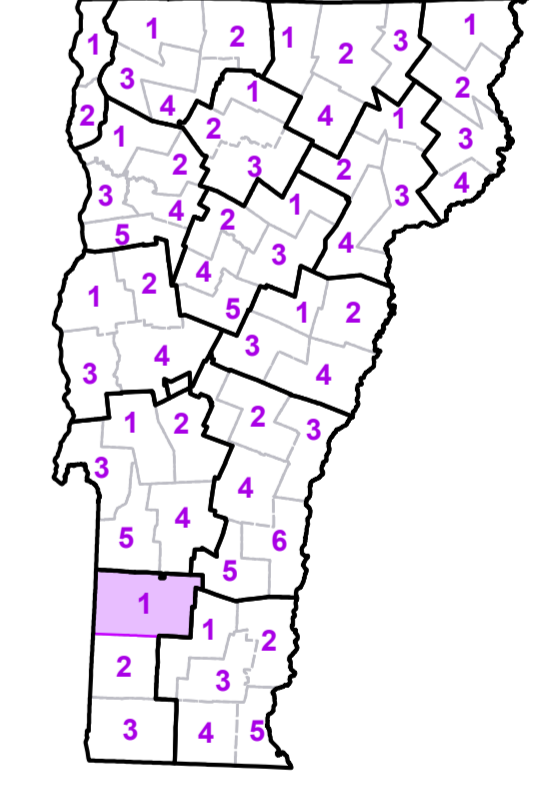


- Interstate
- U.S. Route
- Vermont Route
- Minor Arterial or Collector
- Interstate
- US Route Divided
- US Route
- State Route Paved
- State Route Unpaved
- Town Highway Paved
- Town Highway Unpaved
- Unimproved or Impassible
- Town Legal Trail
- Discontinued Highway
- Railroad

TOWN
Andover
Arlington
Arlington U.C.
Danby
Dorset
Jamaica
Landgrove
Londonberry
Ludlow
Manchester
Manchester Center Depot U.C.
Manchester Center Village
Mount Holly
Mount Tabor
Peru
Rupert
Sandgate
Stratton
Sunderland
Weston
Windham
Winhall

- Federal Aid Route**
- Principal Arterial
- Minor Arterial
- Major Collector
- Federal Aid Urban
- Minor Collector *
* not Federal Aid eligible
- VTrans District Office
- Emergency Response Site**
- Police Station
- Fire Station
- Hospital
- Cemetery
- Building
- Localities
- State Capital (Montpelier)
- Bridge or Culvert
- Water Body
- Stream or Brook
- Public Land
- Public Airport
- State Boundary
- County Boundary
- Town Boundary
- Village Boundary
- Urban Compact Boundary
- County Subtle

Vermont State Plane Coordinate System
 North American Datum of 1983
 SPCS_Zone_Identifier: 4400
 Geodetic Reference System 80
 5,000-meter grid, Easting - Northing



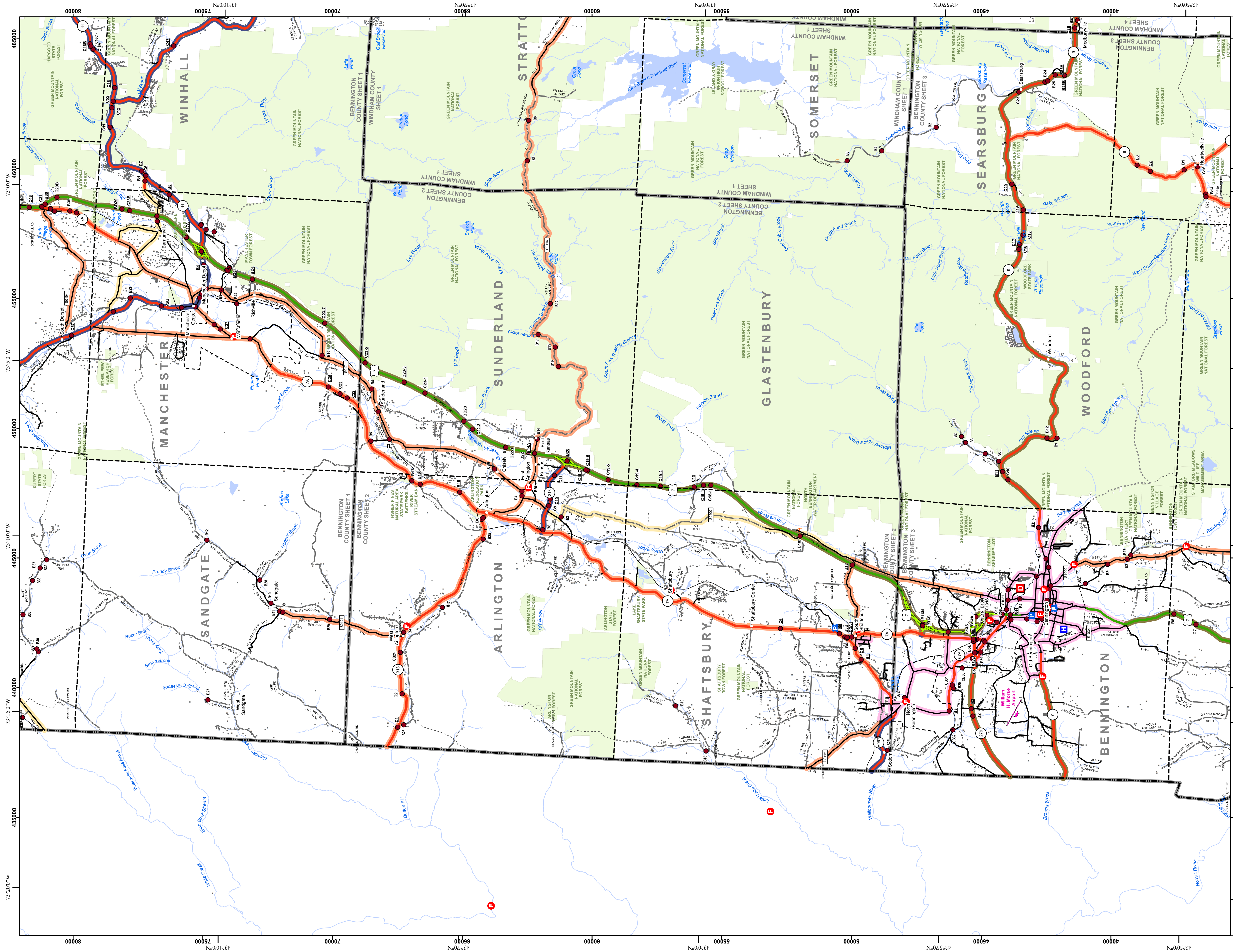
**VERMONT
 COUNTY - TOWN MAP SERIES
 BENNINGTON COUNTY
 SHEET 1 OF 3**

Prepared by the
**Vermont Agency of Transportation
 Mapping Unit**
 in cooperation with
**U.S. Department of Transportation
 Federal Highway Administration**

January 2012
 Scale 1:63360 (printed size: 36 x 24 inches)

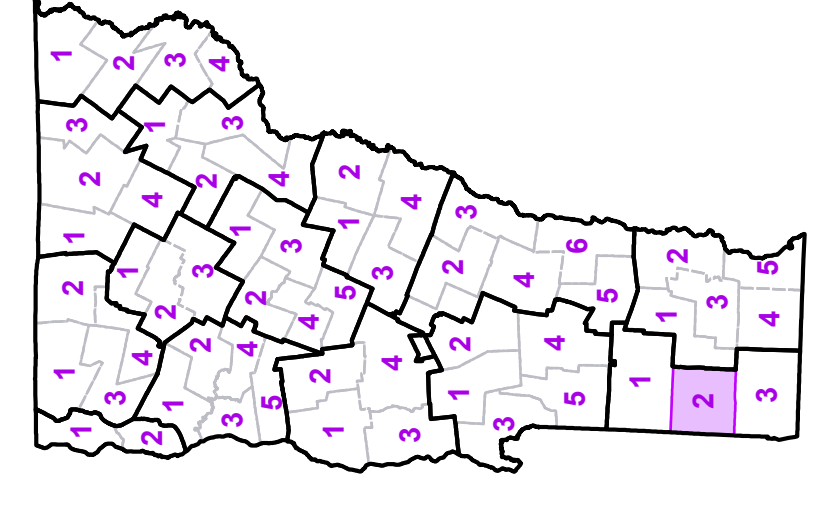
Contact information: Vermont Agency of Transportation
 Division of Policy, Planning and Intermodal Development, Mapping Unit
 1 National Life Drive, Montpelier, VT 05633-5001
 Telephone: 802-828-2600

This map was funded in part through grants from the Federal Highway Administration, U.S. Department of Transportation. The representation of the authors expressed herein do not necessarily state or reflect those of the U.S. Department of Transportation.



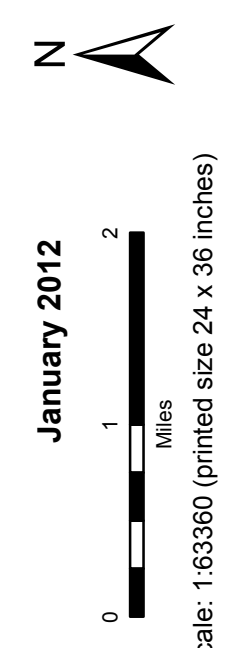
- Interstate
 - U.S. Route
 - Vermont Route
 - Minor Arterial or Collector
 - US Route Divided
 - US Route Paved
 - State Route Paved
 - State Route Unpaved
 - Town Highway Paved
 - Town Highway Unpaved
 - Unimproved or impassible
 - Town Legal Trail
 - Discontinued Highway
 - Railroad
- Public Land
 - Public Airport
 - State Boundary
 - County Boundary
 - Town Boundary
 - Village Boundary
 - Urban Compact Boundary
 - County Subtle
- VTrans District Office
 - Police Station
 - Fire Station
 - Hospital
 - Cemetery
 - Building
 - Localities
 - State Capital (Montpelier)
 - Bridge or Culvert
 - Water Body
 - Stream or Brook
- B20 / C20 State Bridge or Culvert Identifier
 - B20 / C20 Town Bridge or Culvert Identifier
- Vermont State Plane Coordinate System
North American Datum of 1983
SPCS Vermont Zone 1800
Geoid Reference System 80
5,000-meter grid, Easting - Northing

TOWN	TOWN	TOWN
Arlington	Peru	Winnington
Arlington U.C.	Pewell	Winhall
Bennington	Readsboro	Woodford
Bennington U.C.	Rupert	
Dorset	Sandgate	
Dover	Searsburg	
Glastenbury	Shaftsbury	
Manchester	Somerset	
Manchester Center Depot U.C.	Stamford	
Manchester Center Village	Stratton	
N. Bennington Village	Sunderland	
Old Bennington Village	Winnington	



**VERMONT
COUNTY - TOWN MAP SERIES
BENNINGTON COUNTY
SHEET 2 OF 3**

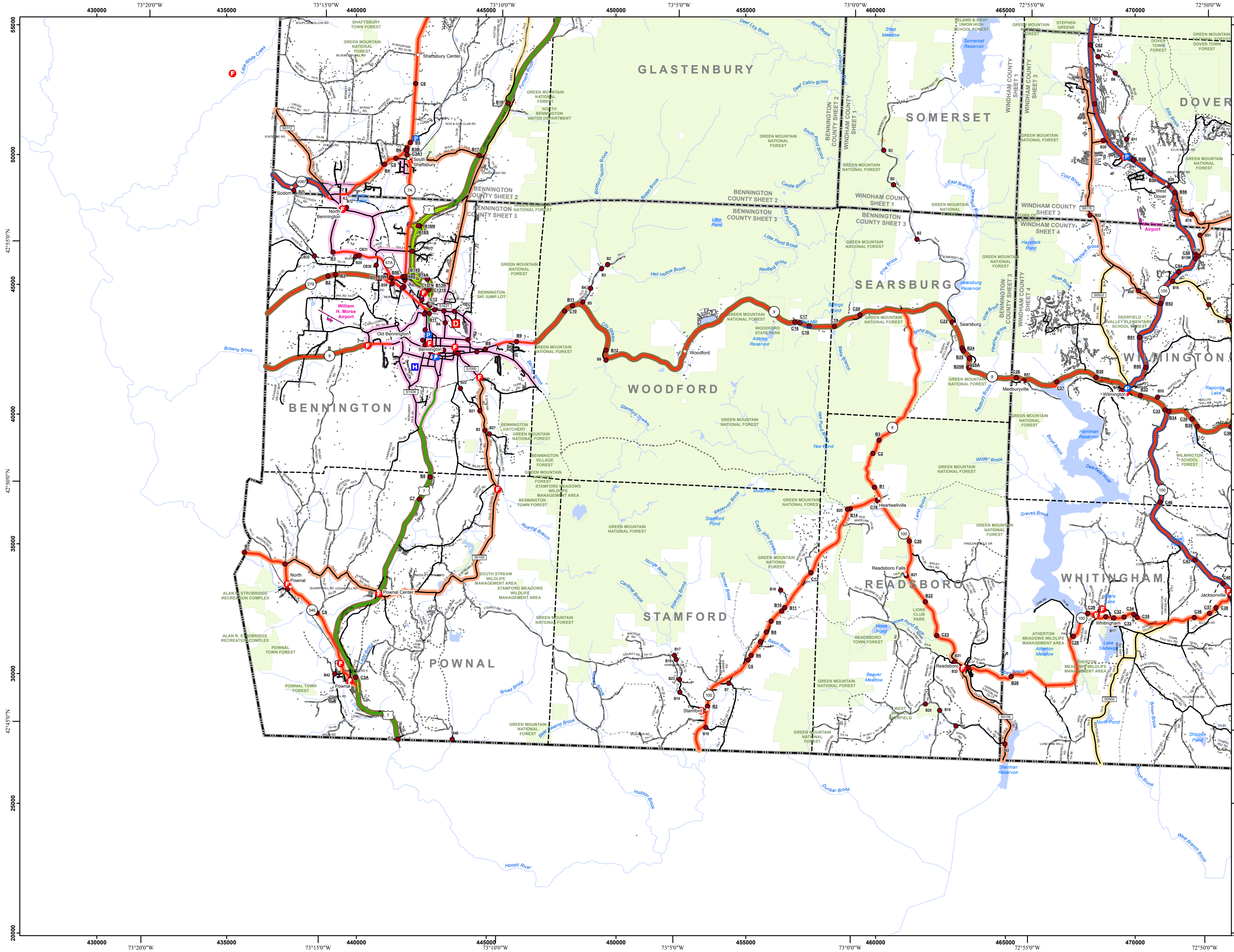
Prepared by the
**Vermont Agency of Transportation
Mapping Unit**
in cooperation with
**U.S. Department of Transportation
Federal Highway Administration**



Scale: 1:63360 (printed size 24 x 36 inches)

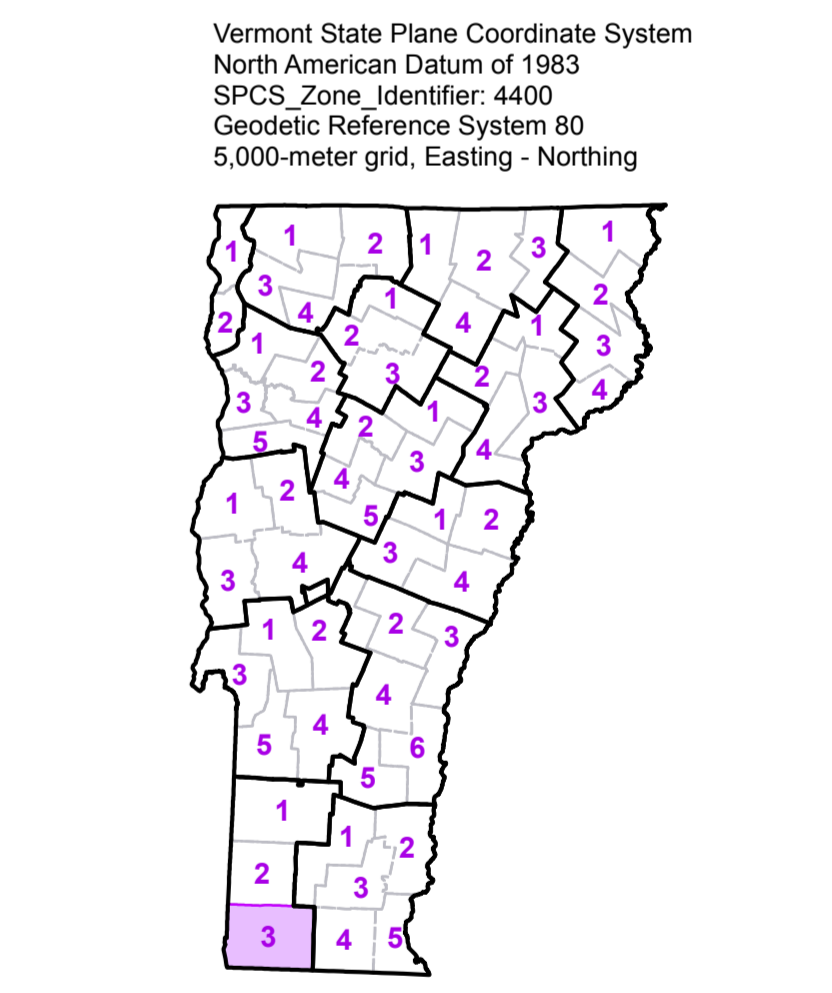
Contact Information: Vermont Agency of Transportation
1 National Life Drive, Montpelier, VT 05633-5001, Telephone: 802-628-2600

This map was funded in part through grants from the Federal Highway Administration, U.S. Department of Transportation. The representation of the authors expressed herein do not necessarily state or reflect those of the U.S. Department of Transportation.



TOWN	
Bennington	
Bennington U.C.	
Dover	
Glasterbury	
Jacksonville Village	
N. Bennington Village	
Old Bennington Village	
Pownal	
Readsboro	
Searsburg	
Shaftsbury	
Somerset	
Stamford	
Stratton	
Wardsboro	
Whitingham	
Wilmington	
Woodford	

- Interstate
- U.S. Route
- Vermont Route
- Minor Arterial or Collector
- Interstate
- US Route Divided
- US Route
- State Route Paved
- State Route Unpaved
- Town Highway Paved
- Town Highway Unpaved
- Unimproved or Impassible
- Town Legal Trail
- Discontinued Highway
- Railroad
- Federal Aid Route
 - Principal Arterial
 - Minor Arterial
 - Major Collector
 - Federal Aid Urban
 - Minor Collector *not Federal Aid eligible
- VTrans District Office
- Emergency Response Site
 - Police Station
 - Fire Station
 - Hospital
 - Cemetery
 - Building
 - Localities
 - State Capital (Montpelier)
 - Bridge or Culvert
 - Water Body
 - Stream or Brook
 - Public Land
 - Public Airport
- State Boundary
- County Boundary
- Town Boundary
- Village Boundary
- Urban Compact Boundary
- County Subtile
- B20 / C20 State Bridge or Culvert Identifier
- B20 / C20 Town Bridge or Culvert Identifier



VERMONT
 COUNTY - TOWN MAP SERIES
BENNINGTON COUNTY
SHEET 3 OF 3

Prepared by the
Vermont Agency of Transportation
 Mapping Unit
 in cooperation with
U.S. Department of Transportation
 Federal Highway Administration



Contact information: Vermont Agency of Transportation
 Division of Policy, Planning and Intermodal Development, Mapping Unit
 1 National Life Drive, Montpelier, VT 05633-5001
 Telephone: 802-828-2600

This map was funded in part through grants from the Federal Highway Administration, U.S. Department of Transportation. The representation of the authors expressed herein do not necessarily state or reflect those of the U.S. Department of Transportation.