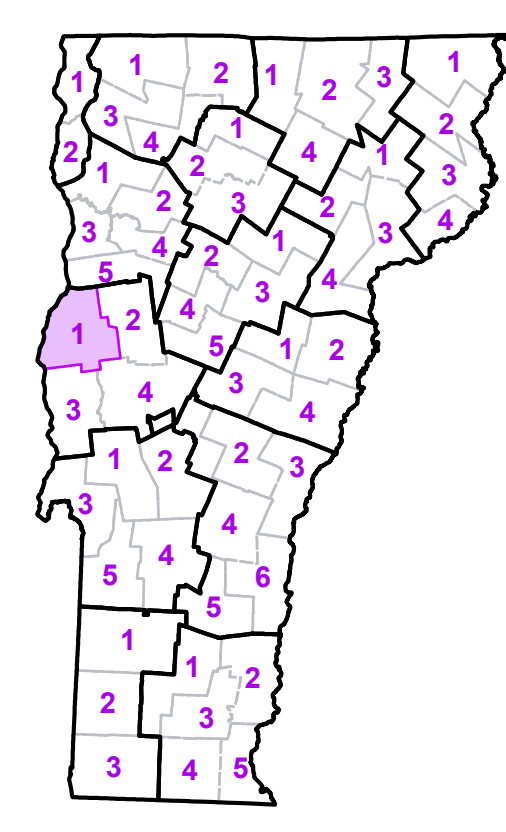


- Interstate
- U.S. Route
- Vermont Route
- Minor Arterial or Collector
- Interstate
- US Route Divided
- US Route
- State Route Paved
- State Route Unpaved
- Town Highway Paved
- Town Highway Unpaved
- Unimproved or Impassible
- Town Legal Trail
- Discontinued Highway
- Railroad

- Federal Aid Route
- Principal Arterial
- Minor Arterial
- Major Collector
- Federal Aid Urban
- Minor Collector-not Federal Aid eligible
- VTrans District Office
- Police Station
- Fire Station
- Hospital
- Cemetery
- Building
- Localities
- State Capital (Montpelier)
- Bridge or Culvert
- Water Body
- Stream or Brook

- Public Land
- Public Airport
- State Boundary
- County Boundary
- Town Boundary
- Village Boundary
- Urban Compact Boundary
- County Subtitle
- B20 / C20 State Bridge or Culvert Identifier
- B20 / C20 Town Bridge or Culvert Identifier

TOWN	TOWN
Addison	Panton
Bridport	Ripton
Bristol	Salisbury
Bristol Village	Shelburne
Charlotte	Shoreham
Cornwall	Starksboro
Ferrisburgh	Vergennes City
Hinesburg	Waltham
Middlebury	Weybridge
Middlebury U.C.	
Monkton	
New Haven	



VERMONT COUNTY - TOWN MAP SERIES
ADDISON COUNTY SHEET 1 OF 4

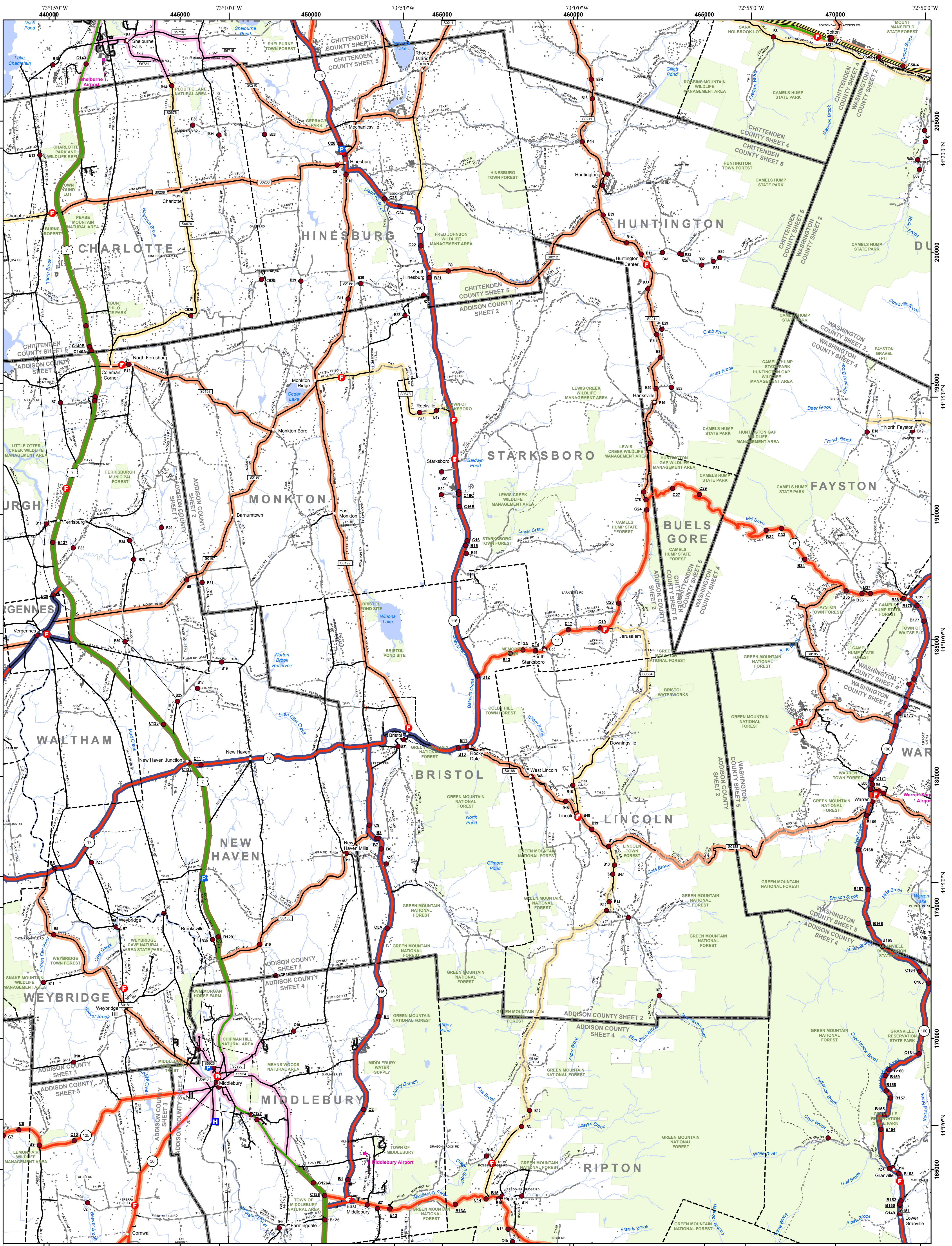
Prepared by the Vermont Agency of Transportation Mapping Unit in cooperation with U.S. Department of Transportation Federal Highway Administration

January 2012

Scale: 1:63360 (printed size 24 x 36 inches)

Contact Information: Vermont Agency of Transportation Division of Policy, Planning and Intermodal Development, Mapping Unit 1 National Life Drive, Montpelier, VT 05633-5001, Telephone: 802-928-2600

This map was funded in part through grants from the Federal Highway Administration, U.S. Department of Transportation. The representation of the authors expressed herein do not necessarily state or reflect those of the U. S. Department of Transportation.



- Interstate
- U.S. Route
- Vermont Route
- Minor Arterial or Collector
- Interstate
- US Route Divided
- US Route
- State Route Paved
- State Route Unpaved
- Town Highway Paved
- Town Highway Unpaved
- Unimproved or Impassible
- Town Legal Trail
- Discontinued Highway
- Railroad

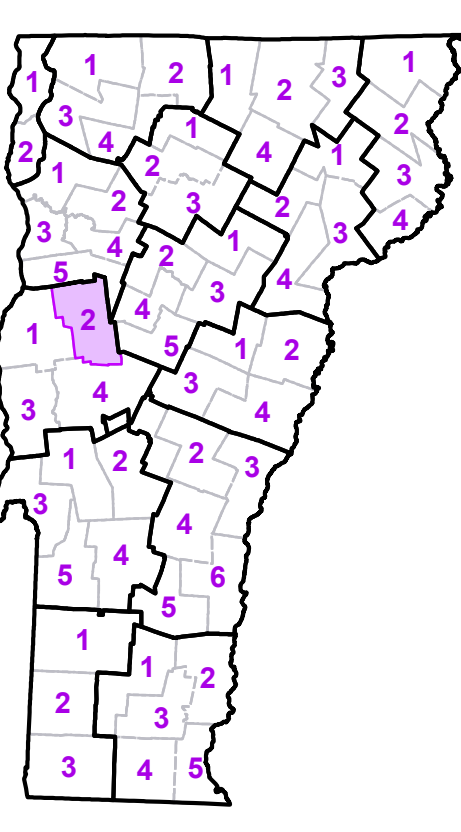
- Federal Aid Route
- Principal Arterial
- Minor Arterial
- Major Collector
- Federal Aid Urban
- Minor Collector-not Federal Aid eligible
- VTrans District Office
- Police Station
- Fire Station
- Hospital
- Cemetery
- Building
- Localities
- State Capital (Montpelier)
- Bridge or Culvert
- Water Body
- Stream or Brook

TOWN	TOWN	TOWN
Addison	Hancock	Shelburne
Bolton	Hinesburg	St. George
Bridport	Huntington	Starksboro
Bristol	Lincoln	Vergennes City
Bristol Village	Middlebury	Waitsfield
Buels Gore	Middlebury U.C.	Waltham
Charlotte	Monkton	Warren
Cornwall	New Haven	Weybridge
Duxbury	Panton	Williston
Fayston	Richmond	
Ferrisburgh	Rippon	
Granville	Salisbury	

- Public Land
- Public Airport
- State Boundary
- County Boundary
- Town Boundary
- Village Boundary
- County Boundary
- County Subtle

- B20 / C20 State Bridge or Culvert Identifier
- B20 / C20 Town Bridge or Culvert Identifier

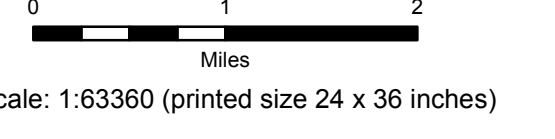
Vermont State Plane Coordinate System
 North American Datum of 1983
 SPCS Zone Identifier: 4400
 Geodetic Reference System 80
 5,000-meter grid, Easting - Northing



VERMONT COUNTY - TOWN MAP SERIES
ADDISON COUNTY SHEET 2 OF 4

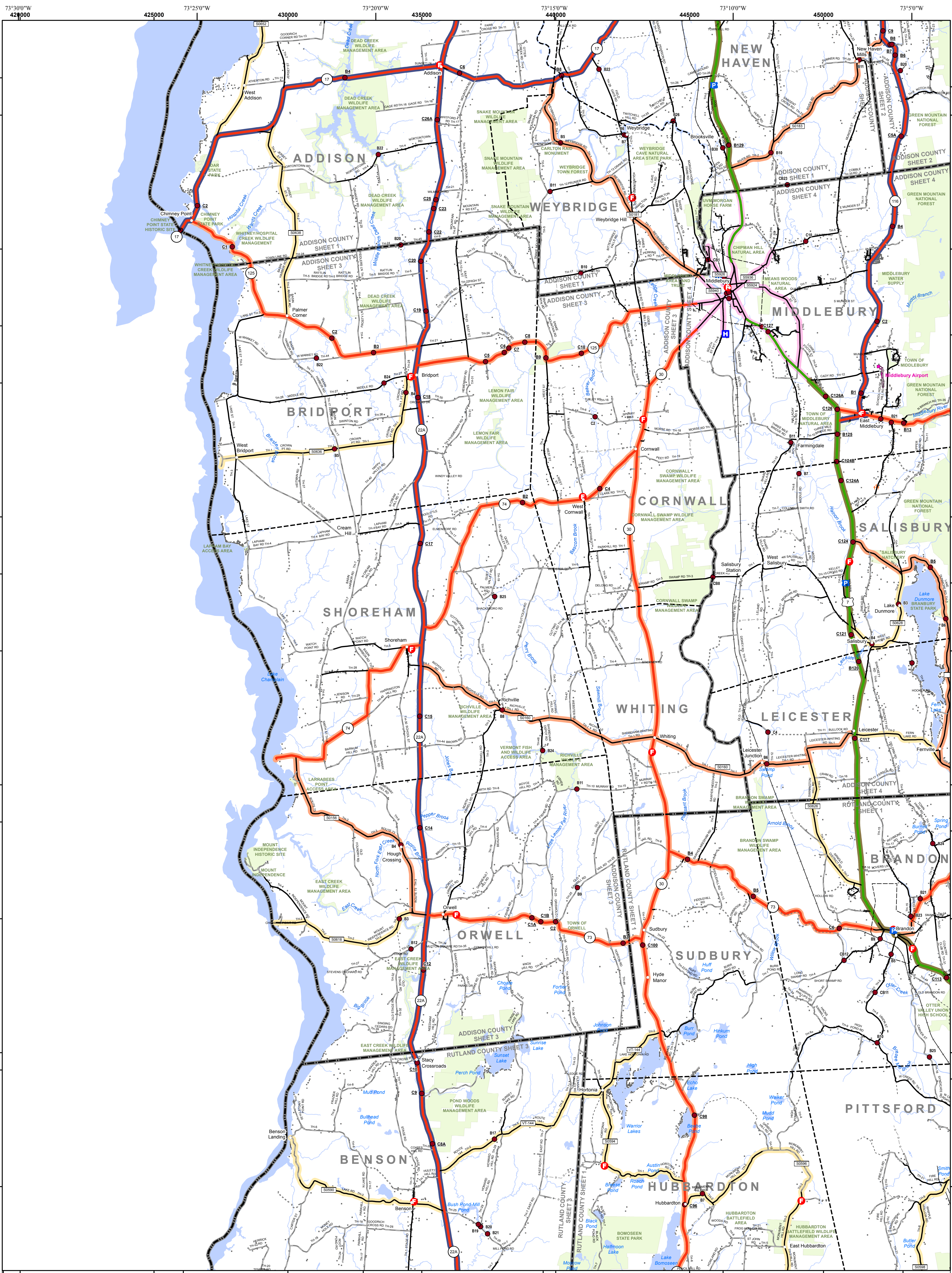
Prepared by the
Vermont Agency of Transportation Mapping Unit
 in cooperation with
U.S. Department of Transportation Federal Highway Administration

January 2012



Contact Information: Vermont Agency of Transportation
 Division of Policy, Planning and Intermodal Development, Mapping Unit
 1 National Life Drive, Montpelier, VT 05633-5001, Telephone: 802-928-2600

This map was funded in part through grants from the Federal Highway Administration, U.S. Department of Transportation. The representation of the authors expressed herein do not necessarily state or reflect those of the U. S. Department of Transportation.



Legend

- Interstate
- U.S. Route
- Vermont Route
- Minor Arterial or Collector
- Interstate
- US Route Divided
- US Route
- State Route Paved
- State Route Unpaved
- Town Highway Paved
- Town Highway Unpaved
- Unimproved or Impassible
- Town Legal Trail
- Discontinued Highway
- Railroad

Federal Aid Route

- Principal Arterial
- Minor Arterial
- Major Collector
- Federal Aid Urban
- Minor Collector-not Federal Aid eligible

Emergency Response Site

- Police Station
- Fire Station
- Hospital
- Cemetery
- Building
- Localities
- State Capital (Montpelier)
- Bridge or Culvert
- Water Body
- Stream or Brook

Public Land

- Public Airport
- State Boundary
- County Boundary
- Town Boundary
- Village Boundary
- Urban Compact Boundary
- County Subtle

Other Symbols

- B20 / C20 State Bridge or Culvert Identifier
- B20 / C20 Town Bridge or Culvert Identifier

Vermont State Plane Coordinate System
North American Datum of 1983
SPCS Zone Identifier: 4400
Geodetic Reference System 80
5,000-meter grid, Easting - Northing

TOWN	TOWN
Addison	Orwell
Benson	Pittsford
Brandon	Proctor
Brandon U.C.	Salisbury
Bridport	Shoreham
Bristol	Sudbury
Corwall	Waltham
Hubbardton	Weybridge
Leicester	Whiting
Middlebury	
Middlebury U.C.	
New Haven	

VERMONT COUNTY - TOWN MAP SERIES

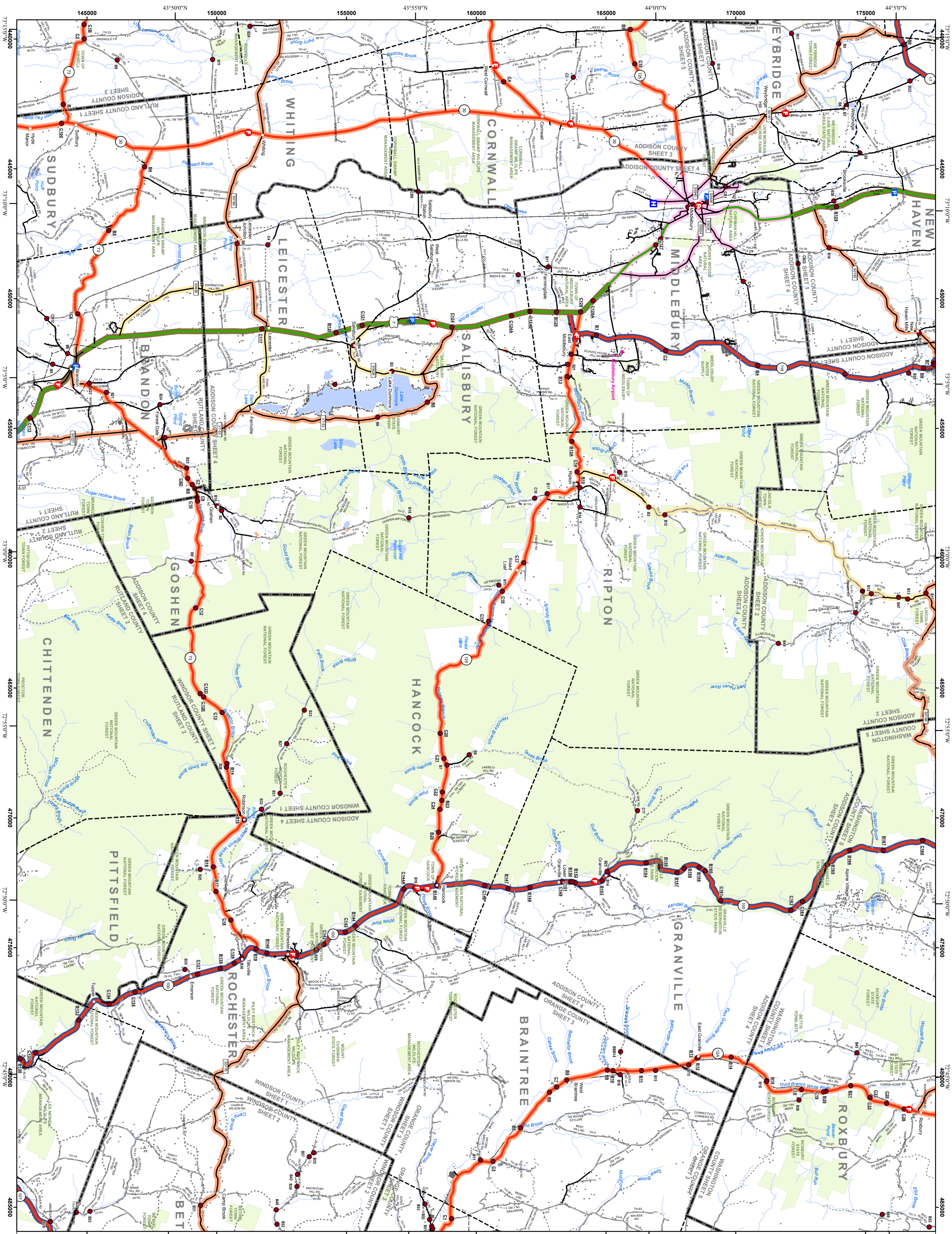
ADDISON COUNTY SHEET 3 OF 4

Prepared by the
Vermont Agency of Transportation
Mapping Unit
in cooperation with
U.S. Department of Transportation
Federal Highway Administration

January 2012

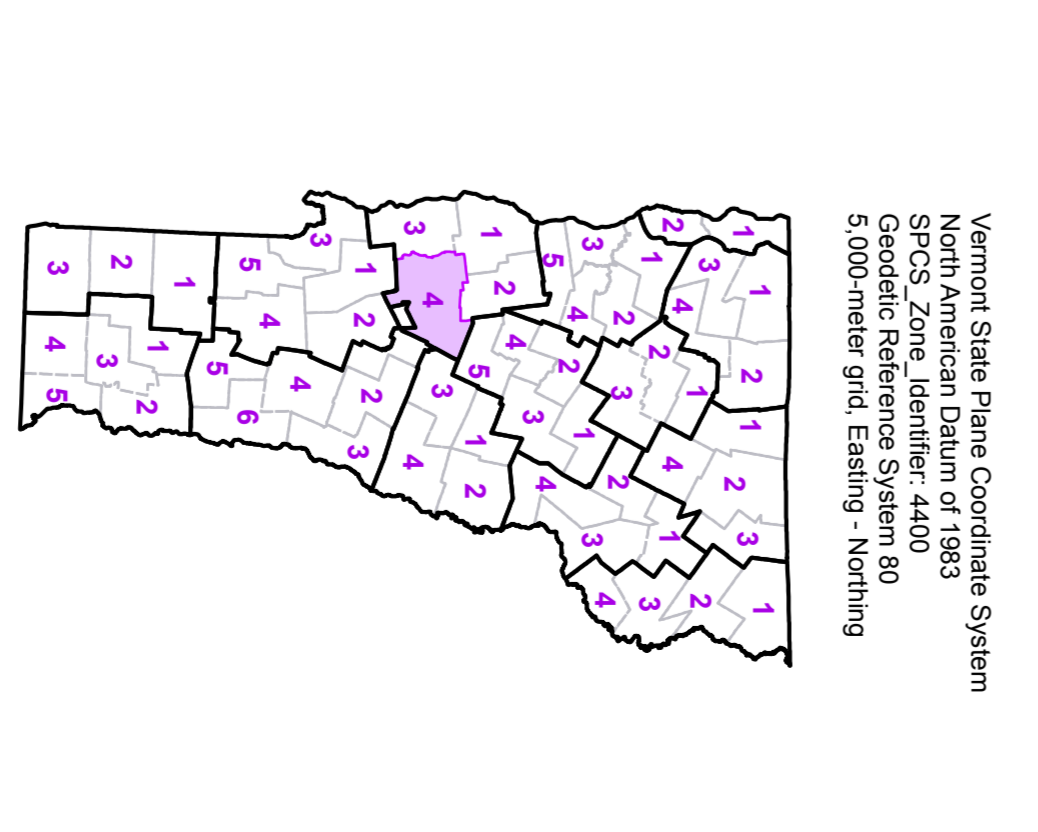
Scale: 1:63360 (printed size 24 x 36 inches)

This map was funded in part through grants from the Federal Highway Administration, U.S. Department of Transportation. The representation of the authors expressed herein do not necessarily state or reflect those of the U. S. Department of Transportation.



TOWN	Color
Addison	Light Green
Bahen	Light Green
Braintree	Light Green
Brandon	Light Green
Brandon U.C.	Light Green
Bridport	Light Green
Bristol	Light Green
Brookfield	Light Green
Chittenden	Light Green
Cornwall	Light Green
Goshen	Light Green
Granville	Light Green
Hancock	Light Green
Leicester	Light Green
Lincoln	Light Green
Madison U.C.	Light Green
New Haven	Light Green
Oswego	Light Green
Randolph	Light Green
Randolph U.C.	Light Green
Ripton	Light Green
Roxbury	Light Green
Roy	Light Green
Salisbury	Light Green
Shelburne	Light Green
Shoreham	Light Green
Stowe	Light Green
Sturbridge	Light Green
Warren	Light Green
Weybridge	Light Green
Whiting	Light Green

- Interstate
- US Route Divided
- US Route
- State Route Paved
- State Route Unpaved
- Town Highway Paved
- Unimproved or Impassable
- Town Legal Trail
- Discontinued Highway
- Railroad
- Federal Aid Route
- Principal Arterial
- Minor Arterial
- Federal Aid Urban
- Minor Collector-not Federal Aid eligible
- Veterans District Office
- Emergency Response Site
- Police Station
- Fire Station
- Hospital
- Cemetery
- Building
- Localties
- State Capital (Montpelier)
- Water Body
- Stream or Brook
- Public Land
- Public Airport
- State Boundary
- County Boundary
- Village Boundary
- Urban Compact Boundary
- County Stable
- B20 / C20 State Bridge
- B20 / C20 Town Bridge
- B20 / C20 Town Bridge or Culvert Identifier
- B20 / C20 Town Bridge or Culvert Identifier



VERMONT
COUNTY - TOWN MAP SERIES
ADDISON COUNTY
SHEET 4 OF 4

Prepared by the
 Vermont Agency of Transportation
 Mapping Unit
 In cooperation with
 U.S. Department of Transportation
 Federal Highway Administration
 January 2012

Contact Information: Vermont Agency of Transportation
 Division of Policy, Planning and Intermodal Development, Mapping Unit
 1 National Life Drive, Montpelier, VT 05633-5001
 Telephone: 802-228-2600

This map was funded in part through grants from the Federal Highway Administration, U.S. Department of Transportation. The preparation of the map is not endorsed herein by the Department of Transportation or the U.S. Department of Transportation.

Scale 1:63,360 (printed size: 36 x 24 inches)
 0 1 2 Miles